

**Medical Direction for MIH/CP Programs**

Brent Myers, MD MPH FAEMS  
President  
NAEMSP



NAEMSP® Annual Meeting | January 8-13, 2018 | Manchester Grand Hyatt | San Diego, CA

---

---

---

---

---

---

---

---

**Medical Direction = Coaching?**



---

---

---

---

---

---

---

---



---

---

---

---

---

---

---

---

### Variety of Models

- Traditional EMS Medical Direction
  - Off-line via standing orders/protocols
  - On-line to EM physicians and/or EMS physicians
- Non-traditional
  - Paramedics joined by other interprofessional team members under EMS physician
  - Paramedics with off-line/on-line medical direction from non-EMS physicians
- Paramedics in model of PA/NP

---

---

---

---

---

---

---

---

### Traditional Models

- Many examples of this:
  - MedSTAR diuresis protocol
  - Wake EMS high risk refusal procedure
  - DC Frequent Flier interventions
  - New Hanover County CHF readmission reduction program
  - Reno urgent care protocol
  - Arizona alternative destinations for Medicaid recipients
  - Sacramento substance abuse/mental health program
  - Multiple programs in Minnesota (North Memorial, Hinnepin, Alliana, etc)
  - The list goes on . . .

---

---

---

---

---

---

---

---

### Novel Model: Interprofessional Team with EMS Physician Supervision



NAEMSP® Annual Meeting | January 8-13, 2018 | Manchester Grand Hyatt | San Diego, CA

---

---

---

---

---

---

---

---

EMS1.com

**EMS Pioneers**  
with Mike Rubin

**Nurse vs. paramedic: Breaking down the rivalry**

Gene Iannuzzi, with over 30 years in both EMS and nursing, says the rivalry has more to do with ignorance than experience

Mar 27, 2017

---

---

---

---

---

---

---

---

*Journal of Health Economics and Outcomes Research* **OPEN ACCESS**

**Mobile Integrated Healthcare: Preliminary Experience and Impact Analysis with a Medicare Advantage Population**

Daniel J. Casrillo<sup>1</sup>, J. Brent Myers<sup>1</sup>, Jonathan Mockel<sup>1</sup>, Eric H. Beckel<sup>2\*</sup>

**JHEOR 2016;4(2):172-87**

---

---

---

---

---

---

---

---

**Table 2a. Unadjusted PMPM Costs, Utilization and Trends**

	Intervention (n = 1,074)		Difference	Control (n = 1,241)		P-value
	Pre	Post		Pre	Post	
<b>PMPM Trend (6 mo. pre, 3 mo. post)</b>						
Total	14%	-19%	-33%	10%	5%	-5%
Inpatient	19%	-21%	-40%	13%	8%	-5%
Emergency Room	17%	-6%	-23%	5%	8%	3%
<b>Utilization Trend (6 mo. pre, 3 mo. post)</b>						
Inpatient	28%	-18%	-46%	6%	6%	0%
Emergency Room	19%	-5%	-24%	4%	7%	3%

---

---

---

---

---

---

---

---

# Novel Model: EMS Personnel with Immediate Primary Care Consultation



NAEMSP® Annual Meeting | January 8-13, 2018 | Manchester Grand Hyatt | San Diego, CA

---

---

---

---

---

---

---

---

# Doc Vader & EMS Speak the Same Language



---

---

---

---

---

---

---

---

Annals of Internal Medicine

ORIGINAL RESEARCH

## Improving Decisions About Transport to the Emergency Department for Assisted Living Residents Who Fall

Jefferson C. Williams, MD, MPH; Michael W. Bachman, MHS, EMT-P; Michael D. Lyons, BA, EMT-P; Benjamin S. Currie, EMT-P; Lawrence H. Brown, PhD; A. Warren Jones, MPH, EMT-P; Jason G. Cabanac, MD, MPH; Alan K. Kohnstamm, MD; and J. Brent Myrnes, MD, MPH

---

---

---

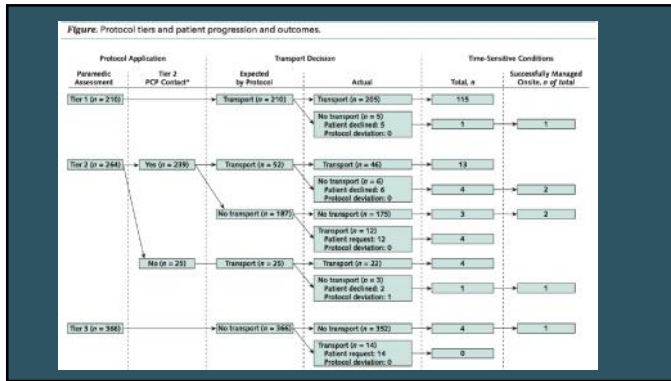
---

---

---

---

---




---

---

---

---

---

---

---

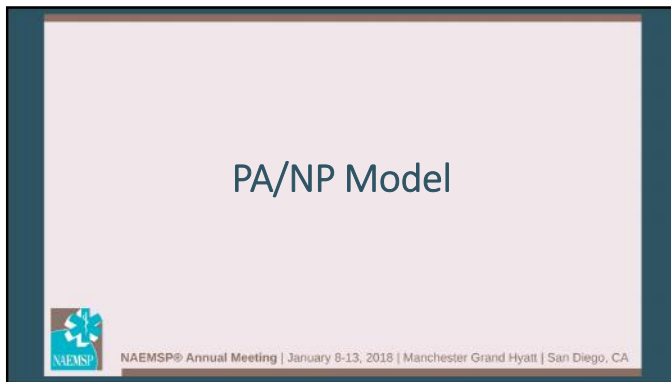
---

---

---

---

---




---

---

---

---

---

---

---

---

---

---

---

---

- ### Summary
- Successful models of MIH/CP Medical Direction are increasingly appearing in the literature
  - Most common model is rather traditional
  - Other models are emerging

---

---

---

---

---

---

---

---

---

---

---

---