

# EMS Fellowship Guide

---

## 2025

National Association of EMS Medical Directors

Council of EMS Fellowship Directors



Powered by:



EMS  
DIVISION OF EMS MEDICINE

Thank you for using the EMS Fellowship Guide. It is our hope that this guide will help to objectively inform your search for a best-fit fellowship. All information in this guide was provided by the leadership of the respective fellowships and accuracy should be verified with that leadership. While we did our very best to contact all programs, we did not receive information from all programs for this year's guide. We will continue to revise, expand, and improve upon this guide in the future. Feedback is always welcome.

Best of luck in your fellowship search!

- Council of EMS Fellowship Directors

# Table of Contents

Albany Medical Center	6
Allegheny Health Network EMS Fellowship	9
Atlantic Health System / Morristown Medical Center	12
Arrowhead Regional Medical Center Program	15
Brown University EMS Fellowship	18
Carolinas Medical Center EMS Fellowship	21
Charleston Area Medical Center Institute of Academic Medicine EMS Fellowship	24
Christiana Care Health Services	27
Cooper University Hospital	30
Eastern Virginia Medical School Program	33
Emory University	36
Florida Atlantic University	39
Henry Ford Health	42
Hennepin County Medical Center EMS	45
Indiana University School of Medicine Out of Hospital Care Fellowship	48
The Johns Hopkins University EMS Fellowship Program	51
Lehigh Valley Health Network	54
Loma Linda University School of Medicine	57
Maimonides Medical Center	60
Maine Medical Center	63
Mayo Clinic EMS Fellowship	66
Medical College of Georgia at Augusta University	69
Medical College of Wisconsin	72
MetroHealth Cleveland EMS Fellowship	75
Military EMS and Disaster Medicine Fellowship Program	78
OhioHealth Doctors Hospital	81
Orlando Regional Medical Center/Orange County EMS	84
Penn State Hershey EMS Fellowship	87
Regions Hospital EMS	90
RWJ Barnabas Health at Newark Beth Israel Medical Center	93
St. Luke's EMS Fellowship	96
Stanford University	99
Stony Brook University EMS Fellowship	102
SUNY Upstate Medical University	105
The Ohio State University	108
UCSF EMS and Disaster Medicine	111
University at Buffalo	114
University of Wisconsin Hospitals and Clinics	117

# Table of Contents

UMass Chan Medical School – Baystate EMS Fellowship	120
University Hospitals Cleveland Medical Center	123
University of Alabama at Birmingham	126
University of Arizona EMS Fellowship	129
Harbor-UCLA Medical Center	132
University of California, San Diego Medical Center	135
University of Central Florida/ HCA	138
University of Chicago EMS Fellowship	141
University of Cincinnati	144
University of Florida EMS Fellowship	147
University of Iowa Hospitals and Clinics EMS Fellowship	150
University of Kansas	153
University of Louisville	156
University of Massachusetts Medical School EMS	159
University of Michigan EMS Fellowship	162
University of Mississippi Medical Center EMS Fellowship	165
University of New Mexico	168
University of North Carolina	171
Penn State	174
University of Pittsburgh EMS Fellowship	177
Palmetto Health Richland/University of South Carolina	180
University of Tennessee – Chattanooga	183
McGovern Medical School at UTHealth – Emergency Medical Services Fellowship	186
University of Texas Health Science Center San Antonio – EMS Fellowship	189
University of Texas Southwestern- Emergency Medical Services Fellowship	192
University of Toronto	195
University of Utah	198
University of Washington EMS Fellowship	201
University of Nebraska Medical Center	204
USF Emergency Medical Services Fellowship	207
UT Austin Dell Medical School	210
Vidant Medical Center / East Carolina University	213
Virginia Commonwealth University	219
VTC EMS Fellowship	222
Wake Forest EMS and Disaster Fellowship	225
Washington University in St. Louis-Fellowship in EMS	228
Wayne State University/City of Detroit EMS Division	231
Western Michigan University, Homer Stryker M.D. School of Medicine	234

# Table of Contents

Yale University	237
-----------------	-----

# ALBANY MEDICAL CENTER

<https://www.amc.edu/education/residencies-fellowships/ems-fellowship/>

*Training EMS Fellows since 1999*



## Basic Information

### Program Director

Michael Dailey, MD

### Assistant/Associate Program Director

Heidi Cordi, MD

### Address

Albany Medical College, 43 New Scotland Avenue, MC-139, Albany, New York 12208

### Region

Northeast

### Extra year available?

Optional

### ACGME Accredited

Yes

### Year of ACGME Accreditation

2017

### Match Participation

Yes

### Percentage of ACGME years with enrolled fellow?

50

### Program Description

Our fellows have a broad variety of public safety opportunities from urban search-and-rescue to law enforcement tactical support, commercial, rotor-wing and municipal third-service and fire-based EMS. Our providers are actively engaged as field physicians and operate a response vehicle. Historically, Albany Med projects have led change of EMS practice throughout the state and the nation including standing order analgesia, BLS injectable epinephrine, and BLS and then law enforcement naloxone.

## Fellow Details

### Base Salary Before Any Moonlighting

\$60,000 - \$80,000

### Average Salary Including Any Moonlighting

\$80,000 - \$100,000

### Weekly Required ED Hours for Base Salary

Less than 10 hours

### Annual Vacation Time

3-4 weeks

### ACGME Fellow Board Exam Pass Rate

100%

### ACGME Fellows Practicing as EMS Medical Directors

100%

## EMS Faculty

### Number of EMS Board Certified Core Faculty

6

### EMS Core Faculty Ranks

Professor

Associate Professor

Assistant Professor

### EMS Faculty Medical Direction Roles

Air EMS agency

Federal agency medical director

Ground EMS agency with less than 100 providers

Ground EMS agency with 100-500 providers

State medical director

Volunteer/paid on call EMS agency

## EMS Experiences

### EMS Activities Offered

Disaster Medicine

Event/Mass Gathering Medicine

Ground EMS

HEMS

Rural EMS

TEMS

USAR

Wilderness Medicine

### Fellow Driven Field Response Vehicle

Yes

### Description of Fellow Driven Vehicle

Full time, take home vehicle for fellow

### Online Medical Control Opportunities

Yes

### Funded and Consistently Attended Fellow Experiences

NAEMSP Medical Director Course

NAEMSP Conference

CONTOMS

EMS World

### Didactic Hour Modality

EMS specific conference time

### **Institutions Where Fellows Work Clinically in ED**

Single site, but multiple sites optional

### **Required Clinical Sites**

Academic Medical Center

### **Optional Clinical Sites**

Community ED

Rural ED

Stand Alone ED

Urgent Care

### **Do Fellows Practice as Independent Attendings in ED?**

Yes

### **Fellow Moonlighting Status**

Optional

## **PARTING WORDS**

The Capital District of New York is a great place to live and work. While we complete the standard curriculum, we think that our approach to EMS fellowship is well-directed to the needs of each individual candidate. Come see Albany!



# ALLEGHENY GENERAL HOSPITAL

<https://alleghenygeneralems.com>

Marybeth.Reddington@ahn.org

*Training EMS Fellows since 2015*



## Basic Information

### Program Director

Chadd Nesbit, MD, PhD, FACEP, FAEMS

### Assistant/Associate Program Director

Phil Nawrocki, MD, FACEP, FAEMS

### Address

320 East North Ave, Pittsburgh, Pennsylvania 15212

### Region

Northeast

### Extra year available?

No

### ACGME Accredited

Yes

### Year of ACGME Accreditation

2017

### Match Participation

Yes

### Percentage of ACGME years with enrolled fellow?

100

### Program Description

We offer a broad experience in emergency triage, stabilization, and transport of patients throughout Western Pennsylvania. Prehospital care services personnel are active in all aspects of provider education and participate at the local, regional, and state levels. We have urban, suburban, and very rural EMS agencies under our medical direction. The EMS fellow will also have access to a fully-equipped response vehicle to assist EMS services in the region.

## Fellow Details

### Base Salary Before Any Moonlighting

\$60,000 - \$80,000

### Average Salary Including Any Moonlighting

\$100,000 - \$120,000

### Weekly Required ED Hours for Base Salary

10 - 20 hours

### Annual Vacation Time

1-2 weeks

### ACGME Fellow Board Exam Pass Rate

100%

### ACGME Fellows Practicing as EMS Medical Directors

100%

## EMS Faculty

### Number of EMS Board Certified Core Faculty

5

### EMS Core Faculty Ranks

Associate Professor

Assistant Professor

### EMS Faculty Medical Direction Roles

Air EMS agency

Ground EMS agency with less than 100 providers

Paramedic initial certification training center

Volunteer/paid on call EMS agency

## EMS Experiences

### EMS Activities Offered

Disaster Medicine

Event/Mass Gathering Medicine

Fixed Wing EMS

Ground EMS

HEMS

Rural EMS

TEMS

Wilderness Medicine

### Fellow Driven Field Response Vehicle

Yes

### Description of Fellow Driven Vehicle

Full time, take home vehicle for fellow

### Online Medical Control Opportunities

Yes

### Funded and Consistently Attended Fellow Experiences

NAEMSP Medical Director Course

NAEMSP Conference

NREMT medical director course

### Didactic Hour Modality

EMS specific conference time

**Institutions Where Fellows Work Clinically in ED**

Single site, but multiple sites optional

**Required Clinical Sites**

Community ED

**Optional Clinical Sites**

Community ED

**Do Fellows Practice as Independent Attendings in ED?**

Yes

**Fellow Moonlighting Status**

Optional

## PARTING WORDS

Pittsburgh is a very family-friendly city with a reasonable cost of living with many of the amenities of a larger city life

without the associated cost or other issues of living in a large urban area.

AHN provides medical direction for more than 100 EMS agencies and has a very strong tradition of working closely with our community partners to provide the the highest quality patient care possible through regular educational offerings and active medical director involvement.



# MORRISTOWN MEDICAL CENTER/ATLANTIC HEALTH SYSTEM

<https://motownnemsfellowship.com>

[wescott.christian@atlantichealth.org](mailto:wescott.christian@atlantichealth.org)



Atlantic  
Health System  
Morristown Medical Center

*Training EMS Fellows since Un-accredited - 2000; Accredited 2021*

## Basic Information

**Program Director**  
David Feldman, MD

**Assistant/Associate Program Director**  
Michael Berkenbush, MD NRP

**Address**  
100 Madison Ave., Box 8, Morristown, New Jersey 07960

**Region**  
Northeast

**Extra year available?**  
No

**ACGME Accredited**   **Year of ACGME Accreditation**  
Yes   2020

**Match Participation**  
Yes

**Percentage of ACGME years with enrolled fellow?**  
100

### Program Description

Hospital based EMS system in northern New Jersey that services rural, suburban, and urban environments. Atlantic Mobile Health is the EMS arm of our hospital system and provides clinical exposure to all aspects of EMS: BLS, ALS, SCTU, Air Medical, MIH, dispatch, and Patient Transfer Center. Robust curriculum beyond pre-hospital clinical work that includes weekly didactic sessions, lecture experience, administrative experience, and research.

## Fellow Details

**Base Salary Before Any Moonlighting**  
\$80,000 - \$100,000

**Average Salary Including Any Moonlighting**  
Greater than \$120,000

**Weekly Required ED Hours for Base Salary**  
10 - 20 hours

**Annual Vacation Time**  
3-4 weeks

**ACGME Fellow Board Exam Pass Rate**  
100%

**ACGME Fellows Practicing as EMS Medical Directors**  
67% - 99%

## EMS Faculty

### Number of EMS Board Certified Core Faculty

3

### EMS Core Faculty Ranks

Associate Professor

### EMS Faculty Medical Direction Roles

Air EMS agency

Ground EMS agency with 100-500 providers

Paramedic initial certification training center

Volunteer/paid on call EMS agency

## EMS Experiences

### EMS Activities Offered

Event/Mass Gathering Medicine

Ground EMS

HEMS

TEMS

Wilderness Medicine

### Fellow Driven Field Response Vehicle

Yes

### Description of Fellow Driven Vehicle

Call schedule, take home vehicle for fellow

### Online Medical Control Opportunities

Yes

### Funded and Consistently Attended Fellow Experiences

NAEMSP Medical Director Course

NAEMSP Conference

NREMT EMS Fellow's Course, NAEMSP Safety & Quality Course, Gathering of Eagles, FDNY Rescue Symposium

### Didactic Hour Modality

EMS specific conference time

### **Institutions Where Fellows Work Clinically in ED**

Single site, but multiple sites optional

### **Required Clinical Sites**

Academic Medical Center  
Tertiary Care/Level 1 Trauma Center

### **Optional Clinical Sites**

Community ED  
Rural ED  
Stand Alone ED  
Urgent Care

### **Do Fellows Practice as Independent Attendings in ED?**

Yes

### **Fellow Moonlighting Status**

Optional

## **PARTING WORDS**

Our hospital-based EMS system allows our EMS fellows a broad range of built-in opportunities to be on the forefront of EMS medicine in all aspects of prehospital care.



# ALLEGHENY HEALTH NETWORK EMS

## FELLOWSHIP

<http://www.alleghenygeneralems.com>

[chris.adelsberg@ahn.org](mailto:chris.adelsberg@ahn.org)

*Training EMS Fellows since 2015*

### Basic Information

**Program Director**  
Chadd Nesbit, MD, PhD

**Assistant/Associate Program Director**

**Address**  
320 East North Ave, Pittsburgh, Pennsylvania 15212

**Region**  
Northeast

**Extra year available?**  
No

**ACGME Accredited**   **Year of ACGME Accreditation**  
Yes   2017

**Match Participation**  
No

**Percentage of ACGME years with enrolled fellow?**  
100

#### Program Description

We offer a broad experience in emergency triage, stabilization, and transport of patients throughout Western Pennsylvania. Prehospital care services personnel are active in all aspects of provider education and participate at the local, regional, and state levels. The EMS fellow will also have access to a fully equipped response vehicle to assist EMS services in the region.

### Fellow Details

**Base Salary Before Any Moonlighting**  
\$40,000 - \$60,000

**Average Salary Including Any Moonlighting**  
\$80,000 - \$100,000

**Weekly Required ED Hours for Base Salary**  
10 - 20 hours

**Annual Vacation Time**  
1-2 weeks

**ACGME Fellow Board Exam Pass Rate**

**ACGME Fellows Practicing as EMS Medical Directors**

## EMS Faculty

### Number of EMS Board Certified Core Faculty

2

### EMS Core Faculty Ranks

Assistant Professor

### EMS Faculty Medical Direction Roles

Air EMS agency

Ground EMS agency with less than 100 providers

Paramedic initial certification training center

Volunteer/paid on call EMS agency

## EMS Experiences

### EMS Activities Offered

Disaster Medicine

Event/Mass Gathering Medicine

Ground EMS

HEMS

Rural EMS

TEMS

### Fellow Driven Field Response Vehicle

Yes

### Description of Fellow Driven Vehicle

Call schedule, take home vehicle for fellow

### Online Medical Control Opportunities

Yes

### Funded and Consistently Attended Fellow Experiences

NAEMSP Medical Director Course

NAEMSP Conference

### Didactic Hour Modality

EMS specific conference time

## Clinical Practice

### **Institutions Where Fellows Work Clinically in ED**

Single site, but multiple sites optional

### **Required Clinical Sites**

Community ED

### **Optional Clinical Sites**

### **Do Fellows Practice as Independent Attendings in ED?**

Yes

### **Fellow Moonlighting Status**

Optional

## **PARTING WORDS**

Pittsburgh is a very family-friendly city with a reasonable cost of living with many of the amenities of a larger city.

AHN provides medical command for 91 EMS agencies across Western Pennsylvania and has a strong tradition of working very closely with our community partners to provide the the highest quality patient care possible through regular educational offerings and active medical director involvement.

# FELLOWSHIP IN EMS AT BROWN

<https://brownemsdivision.org>

[wwesley@brownhealth.org](mailto:wwesley@brownhealth.org)

*Training EMS Fellows since 2009*

BPI



BROWN  
EMERGENCY  
MEDICINE

## Basic Information

### Program Director

Nicholas Asselin, DO, MS, FACEP, FAEMS

### Assistant/Associate Program Director

### Address

55 Claverick Street, 2nd floor, Providence, Rhode Island 02903

### Region

Northeast

### Extra year available?

Optional

### ACGME Accredited

Yes

### Year of ACGME

Accreditation

2014

### Match Participation

Yes

### Percentage of ACGME

years with enrolled  
fellow?

65

### Program Description

The Fellowship in EMS offers a broad experience in EMS focused on practical medical direction and field response with various local EMS agencies as well as leading our hospital ground critical care transport team. Fellows can leverage the strong academic climate at Brown to develop niches such as global, pediatrics, ultrasound, simulation, education, disaster or research. Faculty expertise includes, MIH, HEMS, wilderness, USAR, TEMS, State EMS medical direction and political advocacy.

## Fellow Details

### Base Salary Before Any Moonlighting

\$60,000 - \$80,000

### Average Salary Including Any Moonlighting

\$100,000 - \$120,000

### Weekly Required ED Hours for Base Salary

10 - 20 hours

### Annual Vacation Time

3-4 weeks

### ACGME Fellow Board Exam Pass Rate

100%

### ACGME Fellows Practicing as EMS Medical Directors

100%

## EMS Faculty

### Number of EMS Board Certified Core Faculty

4

### EMS Core Faculty Ranks

Professor

Associate Professor

Assistant Professor

### EMS Faculty Medical Direction Roles

Air EMS agency

Ground EMS agency with less than 100 providers

Ground EMS agency with 100-500 providers

Ground EMS agency with 500-1000 providers

Paramedic initial certification training center

State medical director

Volunteer/paid on call EMS agency

## EMS Experiences

### EMS Activities Offered

Disaster Medicine

Event/Mass Gathering Medicine

Ground EMS

HEMS

Rural EMS

TEMS

USAR

Wilderness Medicine

### Fellow Driven Field Response Vehicle

Yes

### Description of Fellow Driven Vehicle

Shared vehicle

### Online Medical Control Opportunities

Yes

### Funded and Consistently Attended Fellow Experiences

NAEMSP Medical Director Course

NAEMSP Conference

TEEX Courses

CONTOMS

### Didactic Hour Modality

EMS specific conference time

**Institutions Where Fellows Work Clinically in ED**

Multiple sites required

**Required Clinical Sites**

Academic Medical Center

Community ED

Tertiary Care/Level 1 Trauma Center

**Do Fellows Practice as Independent Attendings in ED?**

Yes

**Fellow Moonlighting Status**

Optional

## PARTING WORDS

1/3rd of required ED shifts will hone skills, EMS interaction and resident supervision as the lead physician in the trauma/critical care area of our tertiary academic medical center emergency department. We also offer many opportunities to explore specialty niches in EMS through our partner agencies including MIH, wilderness/SAR, mass gatherings, USAR/tech rescue, dive/swift water teams, HEMS, TEMS, and marine EMS experience at the US Coast Guard Station at Castle Hill, Newport.



# CAROLINAS MEDICAL CENTER EMS FELLOWSHIP

<https://atriumhealth.org/education/graduate-medical-education/physician-fellowships/emergency-medicine/ems-program>

amy.swoope@advocatehealth.org

*Training EMS Fellows since 1995*



## Basic Information

**Program Director**  
Tyler Constantine, MD

**Assistant/Associate Program Director**

**Address**  
1604 Scott Ave, Charlotte, North Carolina 28203

**Region**  
South

**Extra year available?**  
Optional

**ACGME Accredited**  
Yes

**Year of ACGME Accreditation**  
2014

**Match Participation**  
Yes

**Percentage of ACGME years with enrolled fellow?**  
100

### Program Description

The EMS Fellowship Program at Atrium Health's Carolinas Medical Center was established in 1995 and has been training future leaders in prehospital medicine ever since. The fellowship is closely affiliated with the Mecklenburg EMS Agency (Medic), Med Center Air and other local agencies.

## Fellow Details

**Base Salary Before Any Moonlighting**  
\$60,000 - \$80,000

**Average Salary Including Any Moonlighting**  
\$80,000 - \$100,000

**Weekly Required ED Hours for Base Salary**  
10 - 20 hours

**Annual Vacation Time**  
3-4 weeks

**ACGME Fellow Board Exam Pass Rate**  
100%

**ACGME Fellows Practicing as EMS Medical Directors**  
67% - 99%

## EMS Faculty

### Number of EMS Board Certified Core Faculty

3

### EMS Core Faculty Ranks

Professor

Associate Professor

Assistant Professor

### EMS Faculty Medical Direction Roles

Air EMS agency

Ground EMS agency with less than 100 providers

Ground EMS agency with 100-500 providers

Ground EMS agency with 500-1000 providers

Paramedic initial certification training center

## EMS Experiences

### EMS Activities Offered

Disaster Medicine

Event/Mass Gathering Medicine

Fixed Wing EMS

Global EMS

Ground EMS

HEMS

Rural EMS

TEMS

Wilderness Medicine

### Fellow Driven Field Response Vehicle

Yes

### Description of Fellow Driven Vehicle

Take-home QRV for each fellow

### Online Medical Control Opportunities

Yes

### Funded and Consistently Attended Fellow Experiences

NAEMSP Medical Director Course

NAEMSP Conference

Board Preparation Course

### Didactic Hour Modality

Weekly in person and/or virtually

**Institutions Where Fellows Work Clinically in ED**

Single site only

**Required Clinical Sites**

Academic Medical Center

Tertiary Care/Level 1 Trauma Center

**Do Fellows Practice as Independent Attendings in ED?**

Yes

**Fellow Moonlighting Status**

Optional

# CHARLESTON AREA MEDICAL CENTER

## INSTITUTE OF ACADEMIC MEDICINE EMS

### FELLOWSHIP

<https://www.camcmedicine.edu/departments/emergency-medicine/emergency-medical-services-fellowship>

collin.smith@vandaliahealth.org

*Training EMS Fellows since 2025*

#### Basic Information

##### Program Director

Collin Smith, DO

##### Assistant/Associate Program Director

##### Address

3110 MacCorkle Avenue, SE, Charleston, West Virginia 25304

##### Region

South

##### Extra year available?

No

##### ACGME Accredited

Yes

##### Year of ACGME Accreditation

##### Match Participation

Yes

##### Percentage of ACGME years with enrolled fellow?

100

##### Program Description

The EMS Fellowship is committed to advancing emergency medical services through a robust framework of education, research and community engagement. Aligned with CAMC's mission of providing the best care to every patient, every day, we strive to equip our fellows with the expertise and skills necessary to excel in high-pressure environments.

#### Fellow Details

##### Base Salary Before Any Moonlighting

\$60,000 - \$80,000

##### Average Salary Including Any Moonlighting

Greater than \$120,000

##### Weekly Required ED Hours for Base Salary

10 - 20 hours

##### Annual Vacation Time

3-4 weeks

##### ACGME Fellow Board Exam Pass Rate

##### ACGME Fellows Practicing as EMS Medical Directors

## EMS Faculty

### **Number of EMS Board Certified Core Faculty**

3

### **EMS Core Faculty Ranks**

Not a traditional academic institution

### **EMS Faculty Medical Direction Roles**

Air EMS agency

Ground EMS agency with less than 100 providers

Ground EMS agency with 100-500 providers

Paramedic initial certification training center

## EMS Experiences

### **EMS Activities Offered**

Event/Mass Gathering Medicine

Ground EMS

HEMS

Rural EMS

TEMS

USAR

Wilderness Medicine

### **Fellow Driven Field Response Vehicle**

No

### **Online Medical Control Opportunities**

Yes

### **Funded and Consistently Attended Fellow Experiences**

NAEMSP Medical Director Course

NAEMSP Conference

### **Didactic Hour Modality**

EMS specific conference time

**Institutions Where Fellows Work Clinically in ED**

Multiple sites required

**Required Clinical Sites**

Academic Medical Center

Tertiary Care/Level 1 Trauma Center

**Do Fellows Practice as Independent Attendings in ED?**

Yes

**Fellow Moonlighting Status**

Optional

# CHRISTIANA CARE HEALTH SERVICES

<https://dhss.delaware.gov/dhss/dph/ems/ems.html>

dawn.shane@delaware.gov

*Training EMS Fellows since 2023*



## Basic Information

### Program Director

Rick Hong, MD

### Assistant/Associate Program Director

Kyle Burch, MD

### Address

100 Sunnyside Road, Smyrna, Delaware 19977

### Region

Northeast

### Extra year available?

No

### ACGME Accredited

Yes

### Year of ACGME Accreditation

### Match Participation

Yes

### Percentage of ACGME years with enrolled fellow?

100

### Program Description

The Delaware EMS Fellowship is a joint partnership between the Delaware State Office of EMS and Christiana Care Health Services. Our unique fellowship structure gives fellows direct experience in State EMS medical direction, public health, government policy development, and public/private sector EMS. Our partnership with Christiana care allows clinical practice in a large tertiary health system and experience in critical care transportation.

## Fellow Details

### Base Salary Before Any Moonlighting

\$80,000 - \$100,000

### Average Salary Including Any Moonlighting

Greater than \$120,000

### Weekly Required ED Hours for Base Salary

10 - 20 hours

### Annual Vacation Time

3-4 weeks

### ACGME Fellow Board Exam Pass Rate

### ACGME Fellows Practicing as EMS Medical Directors

100%

## EMS Faculty

### **Number of EMS Board Certified Core Faculty**

4

### **EMS Core Faculty Ranks**

Not a traditional academic institution

### **EMS Faculty Medical Direction Roles**

Air EMS agency  
Ground EMS agency with less than 100 providers  
Ground EMS agency with 100-500 providers  
Ground EMS agency with 500-1000 providers  
Ground EMS agency with over 1000 providers  
Paramedic initial certification training center  
State medical director  
Volunteer/paid on call EMS agency

## EMS Experiences

### **EMS Activities Offered**

Disaster Medicine  
Event/Mass Gathering Medicine  
Ground EMS  
HEMS  
Rural EMS  
TEMS  
USAR

### **Fellow Driven Field Response Vehicle**

No

### **Online Medical Control Opportunities**

Yes

### **Funded and Consistently Attended Fellow Experiences**

### **Didactic Hour Modality**

EMS specific conference time

**Institutions Where Fellows Work Clinically in ED**

Multiple sites required

**Required Clinical Sites**

Academic Medical Center

Community ED

Rural ED

Stand Alone ED

Tertiary Care/Level 1 Trauma Center

**Do Fellows Practice as Independent Attendings in ED?**

Yes

**Fellow Moonlighting Status**

Optional

## PARTING WORDS

Delaware is small but mighty! Delaware as a small state is uniquely poised to stay on the cutting edge of pre-hospital medicine. We are very proud of the amazing EMS leadership and providers that bring life changing exceptional care to our communities. With our unique format you will be exposed to and gain experience in EMS at all levels from public sector agencies, private agencies, and State/Federal government. Feel free to reach out or come visit us to see what we are all about!



# COOPER UNIVERSITY HOSPITAL

<https://www.cooperhealth.edu/fellowships/emergency-medical-services>

neal-stephanie1@cooperhealth.edu

*Training EMS Fellows since 2012*



## Basic Information

**Program Director**  
Gerard Carroll, MD

**Assistant/Associate Program Director**  
Alexander Kuc,

**Address**  
One Cooper Plaza, Camden, New Jersey 08103

**Region**  
Northeast

**Extra year available?**  
No

**ACGME Accredited**    **Year of ACGME Accreditation**  
Yes                      2015

**Match Participation**  
Yes

**Percentage of ACGME years with enrolled fellow?**  
100

**Program Description**

## Fellow Details

**Base Salary Before Any Moonlighting**  
\$100,000 - \$120,000

**Average Salary Including Any Moonlighting**  
Greater than \$120,000

**Weekly Required ED Hours for Base Salary**  
Less than 10 hours

**Annual Vacation Time**  
3-4 weeks

**ACGME Fellow Board Exam Pass Rate**  
100%

**ACGME Fellows Practicing as EMS Medical Directors**  
67% - 99%

## EMS Faculty

### Number of EMS Board Certified Core Faculty

5

### EMS Core Faculty Ranks

Associate Professor

Assistant Professor

### EMS Faculty Medical Direction Roles

Air EMS agency

Ground EMS agency with less than 100 providers

Ground EMS agency with 100-500 providers

State medical director

## EMS Experiences

### EMS Activities Offered

Disaster Medicine

Event/Mass Gathering Medicine

Ground EMS

HEMS

Rural EMS

TEMS

### Fellow Driven Field Response Vehicle

Yes

### Description of Fellow Driven Vehicle

Call schedule, take home vehicle for fellow

### Online Medical Control Opportunities

Yes

### Funded and Consistently Attended Fellow Experiences

NAEMSP Medical Director Course

NAEMSP Conference

### Didactic Hour Modality

EMS specific conference time

## Clinical Practice

### **Institutions Where Fellows Work Clinically in ED**

Single site only

### **Required Clinical Sites**

Academic Medical Center

### **Do Fellows Practice as Independent Attendings in ED?**

Yes

### **Fellow Moonlighting Status**

Optional

# EASTERN VIRGINIA MEDICAL SCHOOL

## PROGRAM

[https://www.evms.edu/emergency\\_medicine/fellowships/emergency\\_medical\\_services\\_fellowship/](https://www.evms.edu/emergency_medicine/fellowships/emergency_medical_services_fellowship/)

jonesai@evms.edu

*Training EMS Fellows since 2017*

### Basic Information

**Program Director**  
Joseph Lang, MD

**Assistant/Associate Program Director**  
Ashley Fox, DP

**Address**

Department of Emergency Medicine, Raleigh Building, Suite 304, Norfolk, Virginia 23507

**Region**

South

**Extra year available?**

No

**ACGME Accredited**

Yes

**Year of ACGME Accreditation**

2019

**Match Participation**

Yes

**Percentage of ACGME years with enrolled fellow?**

100

**Program Description**

### Fellow Details

**Base Salary Before Any Moonlighting**

\$60,000 - \$80,000

**Average Salary Including Any Moonlighting**

\$100,000 - \$120,000

**Weekly Required ED Hours for Base Salary**

**Annual Vacation Time**

**ACGME Fellow Board Exam Pass Rate**

67%-99%

**ACGME Fellows Practicing as EMS Medical Directors**

34% - 66%

## EMS Faculty

### Number of EMS Board Certified Core Faculty

2

### EMS Core Faculty Ranks

Assistant Professor

### EMS Faculty Medical Direction Roles

Federal agency medical director

Ground EMS agency with less than 100 providers

## EMS Experiences

### EMS Activities Offered

Disaster Medicine

Event/Mass Gathering Medicine

Ground EMS

HEMS

Rural EMS

TEMS

USAR

### Fellow Driven Field Response Vehicle

No

### Online Medical Control Opportunities

Yes

### Funded and Consistently Attended Fellow Experiences

NAEMSP Conference

Board Preparation Course

### Didactic Hour Modality

EMS specific conference time

**Institutions Where Fellows Work Clinically in ED**

Multiple sites required

**Required Clinical Sites**

Academic Medical Center

Community ED

Stand Alone ED

Tertiary Care/Level 1 Trauma Center

**Do Fellows Practice as Independent Attendings in ED?**

Yes

**Fellow Moonlighting Status**

Optional



MACON & JOAN BROCK VIRGINIA HEALTH SCIENCES  
EVMS

**Emergency Medicine**  
AT OLD DOMINION UNIVERSITY

# EMORY UNIVERSITY

<https://med.emory.edu/departments/emergency-medicine/education/fellowship/ems.html>

[prehospital.disaster@emory.edu](mailto:prehospital.disaster@emory.edu)

*Training EMS Fellows since 2004*



## Basic Information

### Program Director

Alexander Isakov, MD, MPH, FAEMS

### Assistant/Associate Program Director

Ingrid Bloom, MD, FAEMS

### Address

1599 Clifton Road Suite- 2-113, Atlanta, Georgia 30322

### Region

South

### Extra year available?

No

### ACGME Accredited

Yes

### Year of ACGME Accreditation

2014

### Match Participation

Yes

### Percentage of ACGME years with enrolled fellow?

100

### Program Description

Faculty and fellows provide medical oversight for 911 communications centers, fire-based first responders, and ground and air ambulance services in the metro Atlanta area, including Grady EMS, the emergency ambulance service for the city. Services are also actively engaged in event medicine, critical care transport, mobile stroke unit, biosafety transport and mobile integrated healthcare initiatives.

## Fellow Details

### Base Salary Before Any Moonlighting

### Average Salary Including Any Moonlighting

### Weekly Required ED Hours for Base Salary

### Annual Vacation Time

### ACGME Fellow Board Exam Pass Rate

### ACGME Fellows Practicing as EMS Medical Directors

## EMS Faculty

### Number of EMS Board Certified Core Faculty

10

### EMS Core Faculty Ranks

Professor

Associate Professor

Assistant Professor

### EMS Faculty Medical Direction Roles

Air EMS agency

Ground EMS agency with less than 100 providers

Ground EMS agency with 100-500 providers

Ground EMS agency with 500-1000 providers

Paramedic initial certification training center

Volunteer/paid on call EMS agency

## EMS Experiences

### EMS Activities Offered

Disaster Medicine

Event/Mass Gathering Medicine

Fixed Wing EMS

Global EMS

Ground EMS

HEMS

Rural EMS

TEMS

Wilderness Medicine

### Fellow Driven Field Response Vehicle

Yes

### Description of Fellow Driven Vehicle

Shared vehicle

### Online Medical Control Opportunities

Yes

### Funded and Consistently Attended Fellow Experiences

NAEMSP Medical Director Course

NAEMSP Conference

NREMT EMS Fellows' Program

### Didactic Hour Modality

EMS specific conference time

## Institutions Where Fellows Work Clinically in ED

### Required Clinical Sites

### Do Fellows Practice as Independent Attendings in ED?

### Fellow Moonlighting Status



# FLORIDA ATLANTIC UNIVERSITY

<https://www.fau.edu/medicine/gme/residency-fellowship/ems/>

[EMSfellowship@health.fau.edu](mailto:EMSfellowship@health.fau.edu)

*Training EMS Fellows since 2025*



FLORIDA ATLANTIC UNIVERSITY

Schmidt College of Medicine

## Basic Information

### Program Director

Scott Alter, MD, MBA, NRP

### Assistant/Associate Program Director

### Address

777 Glades Road, BC-71, Boca Raton, Florida 33431

### Region

South

### Extra year available?

No

### ACGME Accredited

Yes

### Year of ACGME Accreditation

### Match Participation

Yes

### Percentage of ACGME years with enrolled fellow?

### Program Description

Florida Atlantic University Charles E. Schmidt College of Medicine offers a unique blend of a university-based fellowship within a fire-based EMS system, in collaboration with our community hospital partners. Across South Florida, our EMS agencies cover everything from urban to rural, ocean to Everglades. Our faculty medical directors are progressive and innovative, delivering exceptional out-of-hospital care to our community.

## Fellow Details

### Base Salary Before Any Moonlighting

\$60,000 - \$80,000

### Average Salary Including Any Moonlighting

### Weekly Required ED Hours for Base Salary

10 - 20 hours

### Annual Vacation Time

3-4 weeks

### ACGME Fellow Board Exam Pass Rate

### ACGME Fellows Practicing as EMS Medical Directors

## EMS Faculty

### Number of EMS Board Certified Core Faculty

6

### EMS Core Faculty Ranks

Associate Professor

Assistant Professor

### EMS Faculty Medical Direction Roles

Air EMS agency

Ground EMS agency with less than 100 providers

Ground EMS agency with 100-500 providers

Ground EMS agency with 500-1000 providers

Ground EMS agency with over 1000 providers

Paramedic initial certification training center

State medical director

## EMS Experiences

### EMS Activities Offered

Disaster Medicine

Event/Mass Gathering Medicine

Ground EMS

### Fellow Driven Field Response Vehicle

Yes

### Description of Fellow Driven Vehicle

Full time, take home vehicle for fellow

### Online Medical Control Opportunities

Yes

### Funded and Consistently Attended Fellow Experiences

NAEMSP Medical Director Course

NAEMSP Conference

Gathering of Eagles

### Didactic Hour Modality

EMS specific conference time

## Clinical Practice

**Institutions Where Fellows Work Clinically in ED**

Multiple sites required

**Required Clinical Sites**

Community ED

**Do Fellows Practice as Independent Attendings in ED?**

Yes

**Fellow Moonlighting Status**

Optional

## PARTING WORDS

We welcome you to join our Florida Atlantic University family. Our Department of [REDACTED] Medicine is growing, with EMS being our first fellowship. We are seeking fellows who are not only looking to become excellent EMS physicians, but are also eager to help shape the future of the program and the advancement of EMS in our community.

<https://www.henryford.com/hcp/med-ed/residencies-fellowships/hfh/em/ems-fellowship>

[mball1@hfhs.org](mailto:mball1@hfhs.org)

*Training EMS Fellows since 2024*

## HENRY FORD HEALTH DIVISION OF EMS

### Basic Information

**Program Director**

Matthew Ball, MD, FAEMS

**Assistant/Associate Program Director**

Howard Klausner, MD, FACEP

**Address**

2799 W Grand Blvd, Detroit, Michigan 48202

**Region**

Midwest

**Extra year available?**

Optional

**ACGME Accredited**

Yes

**Year of ACGME  
Accreditation****Match Participation**

Yes

**Percentage of ACGME  
years with enrolled  
fellow?****Program Description**

The Detroit metro area offers an unparalleled clinical experience which our program pairs with Henry Ford Hospital's strong tradition of education, research, and clinical training. We work in collaboration with the Detroit East Medical Control Authority, State of Michigan EMS Committees, Michigan College of Emergency Physicians, MedStar Ambulance, our own rotor wing ambulance and MIH programs, and EMS colleagues throughout the rural, suburban, and urban hospitals in our health system.

### Fellow Details

**Base Salary Before Any Moonlighting**

\$60,000 - \$80,000

**Average Salary Including Any Moonlighting**

\$80,000 - \$100,000

**Weekly Required ED Hours for Base Salary**

Less than 10 hours

**Annual Vacation Time**

3-4 weeks

**ACGME Fellow Board Exam Pass Rate****ACGME Fellows Practicing as EMS Medical  
Directors**

## EMS Faculty

### Number of EMS Board Certified Core Faculty

5

### EMS Core Faculty Ranks

Professor

Assistant Professor

### EMS Faculty Medical Direction Roles

Air EMS agency

Ground EMS agency with less than 100 providers

Ground EMS agency with 100-500 providers

Ground EMS agency with 500-1000 providers

Ground EMS agency with over 1000 providers

## EMS Experiences

### EMS Activities Offered

Disaster Medicine

Event/Mass Gathering Medicine

Global EMS

Ground EMS

HEMS

Rural EMS

TEMS

USAR

Wilderness Medicine

### Fellow Driven Field Response Vehicle

Yes

### Description of Fellow Driven Vehicle

Shared vehicle

### Online Medical Control Opportunities

Yes

### Funded and Consistently Attended Fellow Experiences

NAEMSP Medical Director Course

NAEMSP Conference

### Didactic Hour Modality

EMS specific conference time

## Clinical Practice

### **Institutions Where Fellows Work Clinically in ED**

Single site, but multiple sites optional

#### **Required Clinical Sites**

Academic Medical Center

Tertiary Care/Level 1 Trauma Center

#### **Optional Clinical Sites**

Academic Medical Center

Community ED

Stand Alone ED

### **Do Fellows Practice as Independent Attendings in ED?**

Yes

### **Fellow Moonlighting Status**

Optional

## **PARTING WORDS**

Henry Ford Hospital has a strong tradition of training medical learners with a fully mature research program and a tremendous variety of resources and colleagues through our academic affiliation with Wayne State University and Michigan State University as well as the many hospitals in Henry Ford Health, the second largest healthcare system in Michigan.

<https://www.hennepinhealthcare.org/medical-education-training/fellowship-programs/emergency-medical-services-fellowship/>

### *Training EMS Fellows since 1995*



**Program Director**  
Nick Simpson, MD

**Assistant/Associate Program Director**  
Gregg Jones, MD

701 Park Ave, Minneapolis, Minnesota 55415

## Midwest

**Extra year available?**  
Optional

<b>ACGME Accredited</b>	<b>Year of ACGME Accreditation</b>
Yes	2014

**Match Participation**  
Yes

**Percentage of ACGME  
years with enrolled  
fellow?**  
50

### Program Description

Founded in 1995, the EMS Fellowship combines clinical, administrative, and field experience in both urban and suburban EMS environments. Our fellows take an active, hands-on role in Hennepin EMS, as well as a suburban fire department EMS service. Fellows practice in Hennepin Healthcare's state-of-the-art Level I Adult and Pediatric Trauma Center. Our fellows gain specialized experience in mass gathering/event medicine, USAR, disaster preparedness as well as field care and tactical EMS.

**Base Salary Before Any Moonlighting**  
\$40,000 - \$60,000

**Average Salary Including Any Moonlighting**  
\$100,000 - \$120,000

**Weekly Required ED Hours for Base Salary**  
10 - 20 hours

**Annual Vacation Time**  
3-4 weeks

**ACGME Fellow Board Exam Pass Rate**  
100%

**ACGME Fellows Practicing as EMS Medical Directors**  
100%

## EMS Faculty

### Number of EMS Board Certified Core Faculty

5

### EMS Core Faculty Ranks

Professor

Assistant Professor

### EMS Faculty Medical Direction Roles

Air EMS agency

Ground EMS agency with 100-500 providers

Paramedic initial certification training center

## EMS Experiences

### EMS Activities Offered

Disaster Medicine

Fixed Wing EMS

Ground EMS

USAR

TEMS

HEMS

Event/Mass Gathering Medicine

### Fellow Driven Field Response Vehicle

Yes

### Description of Fellow Driven Vehicle

Full time, take home vehicle for fellow

### Online Medical Control Opportunities

Yes

### Funded and Consistently Attended Fellow Experiences

NAEMSP Medical Director Course

NAEMSP Conference

Board Preparation Course

### Didactic Hour Modality

EMS specific conference time

**Institutions Where Fellows Work Clinically in ED**

Single site only

**Required Clinical Sites**

Academic Medical Center

Tertiary Care/Level 1 Trauma Center

**Do Fellows Practice as Independent Attendings in ED?**

Yes

**Fellow Moonlighting Status**

Optional

## PARTING WORDS

The mission statement of our fellowship is, "To forge standout EMS Physicians through real world experience." We strive to make every aspect of this experience a hands-on learning environment. Our fellowship is very operational and provides a wide array of experiences for the fellows to explore.



# INDIANA UNIVERSITY SCHOOL OF MEDICINE OUT OF HOSPITAL CARE FELLOWSHIP

<https://medicine.iu.edu/emergency-medicine/education/fellowship/ems>

markliao@iu.edu

*Training EMS Fellows since 2002*



## Basic Information

**Program Director**  
Mark Liao, MD

**Assistant/Associate Program Director**  
Kennen Less, MD

**Address**  
3930 Georgetown Road, Indianapolis, Indiana 46254

**Region**  
Midwest

**Extra year available?**  
No

**ACGME Accredited**  
Yes

**Year of ACGME Accreditation**  
2014

**Match Participation**  
Yes

**Percentage of ACGME years with enrolled fellow?**  
11

### Program Description

Indianapolis may be known for the Indy 500, a single-day motorsports spectacle which draws more than 200,000 guests from across the globe, but on the streets our EMS Fellows are heavily involved in day to day operations with the ground EMS service (Indianapolis EMS), Fire Department (Indianapolis Fire Department), critical care transport and HEMS service (IU Health Lifeline) and TEMS/SWAT (Indianapolis Police Department). They are mentored by multiple EMS boarded faculty throughout the year.

## Fellow Details

**Base Salary Before Any Moonlighting**  
\$60,000 - \$80,000

**Average Salary Including Any Moonlighting**  
\$60,000 - \$80,000

**Weekly Required ED Hours for Base Salary**  
10 - 20 hours

**Annual Vacation Time**  
3-4 weeks

**ACGME Fellow Board Exam Pass Rate**  
100%

**ACGME Fellows Practicing as EMS Medical Directors**  
100%

## EMS Faculty

### Number of EMS Board Certified Core Faculty

7

### EMS Core Faculty Ranks

Professor

Associate Professor

Assistant Professor

### EMS Faculty Medical Direction Roles

Air EMS agency

Ground EMS agency with less than 100 providers

Ground EMS agency with 100-500 providers

Paramedic initial certification training center

## EMS Experiences

### EMS Activities Offered

Disaster Medicine

Event/Mass Gathering Medicine

Ground EMS

HEMS

Rural EMS

TEMS

USAR

### Fellow Driven Field Response Vehicle

Yes

### Description of Fellow Driven Vehicle

Call schedule, take home vehicle for fellow

### Online Medical Control Opportunities

Yes

### Funded and Consistently Attended Fellow Experiences

NAEMSP Medical Director Course

NAEMSP Conference

Board Preparation Course

### Didactic Hour Modality

EMS specific conference time

**Institutions Where Fellows Work Clinically in ED**

Multiple sites required

**Required Clinical Sites**

Academic Medical Center

Community ED

**Do Fellows Practice as Independent Attendings in ED?**

Yes

**Fellow Moonlighting Status**

Optional

## PARTING WORDS

Our program prides itself on its operational focus to make sure Fellows are comfortable with being both leaders in EMS while also being street savvy.



# THE JOHNS HOPKINS UNIVERSITY

<https://www.hopkinsmedicine.org/emergency-medicine/fellowship-programs/ems-fellowship>

egarfin2@jhmi.edu

*Training EMS Fellows since 2014*



## Basic Information

### Program Director

Eric Garfinkel, DO

### Assistant/Associate Program Director

Asa Margolis, DO

### Address

1830 East Monument Street, Suite 6-100, Baltimore, Maryland 21287

### Region

Northeast

### Extra year available?

No

### ACGME Accredited

Yes

### Year of ACGME Accreditation

2014

### Match Participation

Yes

### Percentage of ACGME years with enrolled fellow?

100

### Program Description

The goal of the Johns Hopkins EMS Fellowship is to prepare highly qualified and motivated academic emergency physicians for leadership and medical oversight of emergency medical services systems through advanced competencies in EMS system design, administration, and clinical care. The curriculum provides a comprehensive overview of EMS Core Content as well as monthly journal clubs, morbidity & mortality and case conference discussion, as well as advanced field training exercises and response.

## Fellow Details

### Base Salary Before Any Moonlighting

\$80,000 - \$100,000

### Average Salary Including Any Moonlighting

\$100,000 - \$120,000

### Weekly Required ED Hours for Base Salary

10 - 20 hours

### Annual Vacation Time

3-4 weeks

### ACGME Fellow Board Exam Pass Rate

100%

### ACGME Fellows Practicing as EMS Medical Directors

100%

## EMS Faculty

### Number of EMS Board Certified Core Faculty

5

### EMS Core Faculty Ranks

Associate Professor

Assistant Professor

### EMS Faculty Medical Direction Roles

Air EMS agency

Federal agency medical director

Ground EMS agency with less than 100 providers

Ground EMS agency with 500-1000 providers

Paramedic initial certification training center

State medical director

## EMS Experiences

### EMS Activities Offered

Disaster Medicine

Event/Mass Gathering Medicine

Ground EMS

HEMS

TEMS

Wilderness Medicine

### Fellow Driven Field Response Vehicle

Yes

### Description of Fellow Driven Vehicle

Call schedule, take home vehicle for fellow

### Online Medical Control Opportunities

Yes

### Funded and Consistently Attended Fellow Experiences

NAEMSP Medical Director Course

NAEMSP Conference

### Didactic Hour Modality

EMS specific conference time

**Institutions Where Fellows Work Clinically in ED**

Single site, but multiple sites optional

**Required Clinical Sites**

Community ED

**Optional Clinical Sites**

Academic Medical Center

Tertiary Care/Level 1 Trauma Center

**Do Fellows Practice as Independent Attendings in ED?**

Yes

**Fellow Moonlighting Status**

Optional

# LEHIGH VALLEY HEALTH NETWORK

<https://www.lvhn.org/education/residency-and-fellowship-opportunities/emergency-medical-services>

[emsfellowship@lvhn.org](mailto:emsfellowship@lvhn.org)

*Training EMS Fellows since 2024*



## Basic Information

### Program Director

Zachary Matuzsan, DO

### Assistant/Associate Program Director

### Address

1200 S Cedar Crest Blvd, Allentown, Pennsylvania 18103

### Region

Northeast

### Extra year available?

No

### ACGME Accredited

Yes

### Year of ACGME Accreditation

### Match Participation

Yes

### Percentage of ACGME years with enrolled fellow?

50

### Program Description

Lehigh Valley Health Network (LVHN)'s Emergency Medical Services (EMS) Fellowship is a one-year Accreditation Council for Graduate Medical Education-certified program with the goal of training fellows to become competent in the multiple facets of pre-hospital emergency care. Fellows will have a unique opportunity to become integral members of the LVHN division of EMS that provides oversight and pre-hospital services to a large and diverse region.

## Fellow Details

### Base Salary Before Any Moonlighting

\$80,000 - \$100,000

### Average Salary Including Any Moonlighting

\$100,000 - \$120,000

### Weekly Required ED Hours for Base Salary

Less than 10 hours

### Annual Vacation Time

3-4 weeks

### ACGME Fellow Board Exam Pass Rate

### ACGME Fellows Practicing as EMS Medical Directors

100%

## EMS Faculty

### Number of EMS Board Certified Core Faculty

3

### EMS Core Faculty Ranks

Assistant Professor

### EMS Faculty Medical Direction Roles

Air EMS agency

Ground EMS agency with less than 100 providers

Ground EMS agency with 100-500 providers

Paramedic initial certification training center

Volunteer/paid on call EMS agency

## EMS Experiences

### EMS Activities Offered

Disaster Medicine

Event/Mass Gathering Medicine

Ground EMS

HEMS

Rural EMS

TEMS

USAR

### Fellow Driven Field Response Vehicle

Yes

### Description of Fellow Driven Vehicle

Call schedule, take home vehicle for fellow

### Online Medical Control Opportunities

Yes

### Funded and Consistently Attended Fellow Experiences

NAEMSP Medical Director Course

NAEMSP Conference

### Didactic Hour Modality

EMS specific conference time

**Institutions Where Fellows Work Clinically in ED**

Multiple sites required

**Required Clinical Sites**

Academic Medical Center

Community ED

Rural ED

Tertiary Care/Level 1 Trauma Center

**Do Fellows Practice as Independent Attendings in ED?**

Yes

**Fellow Moonlighting Status**

Optional



# LOMA LINDA UNIVERSITY SCHOOL OF MEDICINE

<https://lluems.org>

[psavino@llu.edu](mailto:psavino@llu.edu)

*Training EMS Fellows since 2021*



## Basic Information

**Program Director**  
Brian Savino, MD

**Assistant/Associate Program Director**  
Seth Dukes, MD

**Address**  
11234 Anderson Street, Loma Linda, California 92354

**Region**  
West

**Extra year available?**  
No

**ACGME Accredited**  
Yes

**Year of ACGME Accreditation**  
2020

**Match Participation**  
Yes

**Percentage of ACGME years with enrolled fellow?**  
66

### Program Description

The Loma Linda University Department of Emergency medicine is thrilled to offer an ACGME accredited fellowship in EMS. The LLU EMS faculty are passionate about EMS education and feel that the Inland Empire of Southern California is an incredible place to train EMS physicians. The goal of the EMS fellowship at LLU is to train well rounded and knowledgeable EMS physicians. This occurs through didactics, HAZ-MAT training, MCI training and participation in mass gathering events such as Coachella.

## Fellow Details

**Base Salary Before Any Moonlighting**  
\$60,000 - \$80,000

**Average Salary Including Any Moonlighting**  
\$80,000 - \$100,000

**Weekly Required ED Hours for Base Salary**  
10 - 20 hours

**Annual Vacation Time**  
3-4 weeks

**ACGME Fellow Board Exam Pass Rate**  
34%-66%

**ACGME Fellows Practicing as EMS Medical Directors**  
100%

## EMS Faculty

### Number of EMS Board Certified Core Faculty

6

### EMS Core Faculty Ranks

Associate Professor

Assistant Professor

### EMS Faculty Medical Direction Roles

Air EMS agency

Ground EMS agency with less than 100 providers

Ground EMS agency with 100-500 providers

Ground EMS agency with 500-1000 providers

Paramedic initial certification training center

Volunteer/paid on call EMS agency

## EMS Experiences

### EMS Activities Offered

Disaster Medicine

Event/Mass Gathering Medicine

Global EMS

Ground EMS

HEMS

Rural EMS

TEMS

### Fellow Driven Field Response Vehicle

Yes

### Description of Fellow Driven Vehicle

Shared vehicle

### Online Medical Control Opportunities

Yes

### Funded and Consistently Attended Fellow Experiences

NAEMSP Medical Director Course

NAEMSP Conference

### Didactic Hour Modality

EMS specific conference time

**Institutions Where Fellows Work Clinically in ED**

Single site only

**Required Clinical Sites**

Academic Medical Center

**Do Fellows Practice as Independent Attendings in ED?**

Yes

**Fellow Moonlighting Status**

Optional

## PARTING WORDS

Loma Linda is an amazing place to train for EMS and to practice academic emergency medicine. We encourage you to apply and to reach out for additional information!



# MAIMONIDES MEDICAL CENTER

<https://www.maimonidesem.org/fellowship/ems>

[mattfriedman@maimo.org](mailto:mattfriedman@maimo.org)

*Training EMS Fellows since 2022*



Maimonides  
**Emergency Medicine**

## Basic Information

### Program Director

Matt Friedman, MD

### Assistant/Associate Program Director

Dave Eng, MD

### Address

965 48th St, Brooklyn, New York 11219

### Region

Northeast

### Extra year available?

No

### ACGME Accredited

Yes

### Year of ACGME

Accreditation

2020

### Match Participation

Yes

### Percentage of ACGME

years with enrolled  
fellow?

100

### Program Description

The EMS fellowship is a 1 year ACGME accredited fellowship based in Brooklyn. Maimo has 14 hospital-based ambulances in the NYC 911 system, 3 critical care interfacility ambulances, 2 physician response vehicles, and 7 EMS physicians on staff. The EMS system responds to approximately 60,000 911 calls annually serving a diverse patient population across NYC. There are ample opportunities to provide prehospital critical care, perform EMS research and obtain unique event medicine opportunities.

## Fellow Details

### Base Salary Before Any Moonlighting

\$80,000 - \$100,000

### Average Salary Including Any Moonlighting

Greater than \$120,000

### Weekly Required ED Hours for Base Salary

10 - 20 hours

### Annual Vacation Time

3-4 weeks

### ACGME Fellow Board Exam Pass Rate

100%

### ACGME Fellows Practicing as EMS Medical Directors

100%

## EMS Faculty

### Number of EMS Board Certified Core Faculty

7

### EMS Core Faculty Ranks

Associate Professor

Assistant Professor

### EMS Faculty Medical Direction Roles

Ground EMS agency with less than 100 providers

Ground EMS agency with 100-500 providers

Ground EMS agency with 500-1000 providers

Volunteer/paid on call EMS agency

## EMS Experiences

### EMS Activities Offered

Disaster Medicine

Event/Mass Gathering Medicine

Fixed Wing EMS

Ground EMS

HEMS

Rural EMS

Wilderness Medicine

### Fellow Driven Field Response Vehicle

Yes

### Description of Fellow Driven Vehicle

Shared vehicle

### Online Medical Control Opportunities

Yes

### Funded and Consistently Attended Fellow Experiences

NAEMSP Medical Director Course

NAEMSP Conference

Board Preparation Course

CONTOMS

### Didactic Hour Modality

EMS specific conference time

## Clinical Practice

### **Institutions Where Fellows Work Clinically in ED**

Multiple sites required

### **Required Clinical Sites**

Academic Medical Center

Community ED

Stand Alone ED

### **Do Fellows Practice as Independent Attendings in ED?**

Yes

### **Fellow Moonlighting Status**

Optional

## MAINE MEDICAL CENTER

<https://www.mmccems.org>

[michael.bohanske@mainehealth.org](mailto:michael.bohanske@mainehealth.org)

*Training EMS Fellows since 2023*

## EMERGENCY MEDICINE Division of EMS



### Basic Information

#### Program Director

Michael Bohanske, MD

#### Assistant/Associate Program Director

Matt Sholl, MD, MPH

#### Address

22 Bramhall St, Dept of Emergency Medicine, Portland, Maine 04102

#### Region

Northeast

#### Extra year available?

No

#### ACGME Accredited

Yes

#### Year of ACGME Accreditation

#### Match Participation

Yes

#### Percentage of ACGME years with enrolled fellow?

100

#### Program Description

MMC is partnered with Portland Fire Department (the busiest 911 service in Maine) and LifeFlight of Maine (Maine's only helicopter critical care transport service) to provide a robust and exciting clinical experience for trainees. EMS Faculty work at all levels of EMS, allowing fellows insight into local medical direction, regional medical direction, statewide medical direction, and even work with national specialty services. MMC is the only EMS Fellowship program in Northern New England.

### Fellow Details

#### Base Salary Before Any Moonlighting

\$80,000 - \$100,000

#### Average Salary Including Any Moonlighting

\$100,000 - \$120,000

#### Weekly Required ED Hours for Base Salary

10 - 20 hours

#### Annual Vacation Time

3-4 weeks

#### ACGME Fellow Board Exam Pass Rate

#### ACGME Fellows Practicing as EMS Medical Directors

100%

## EMS Faculty

### Number of EMS Board Certified Core Faculty

4

### EMS Core Faculty Ranks

Professor

Associate Professor

Assistant Professor

### EMS Faculty Medical Direction Roles

Air EMS agency

Federal agency medical director

Ground EMS agency with less than 100 providers

Ground EMS agency with 100-500 providers

State medical director

## EMS Experiences

### EMS Activities Offered

Event/Mass Gathering Medicine

Fixed Wing EMS

Ground EMS

HEMS

Rural EMS

TEMS

Wilderness Medicine

### Fellow Driven Field Response Vehicle

Yes

### Description of Fellow Driven Vehicle

Call schedule, take home vehicle for fellow

### Online Medical Control Opportunities

Yes

### Funded and Consistently Attended Fellow Experiences

NAEMSP Medical Director Course

NAEMSP Conference

### Didactic Hour Modality

EMS specific conference time

### **Institutions Where Fellows Work Clinically in ED**

Single site only

### **Required Clinical Sites**

Academic Medical Center

Tertiary Care/Level 1 Trauma Center

Urgent Care

### **Do Fellows Practice as Independent Attendings in ED?**

Yes

### **Fellow Moonlighting Status**

Optional

## **PARTING WORDS**

Maine Medical Center, Portland Fire Department, and Life Flight of Maine have partnered to create an exciting training opportunity with our newly accredited program. We are embarking on our second year as an accredited program and are confident our program will be a unique and outstanding experience. Please do not hesitate to reach out to speak to the program director or request additional information.



# MAYO CLINIC COLLEGE OF MEDICINE AND SCIENCE (ROCHESTER) PROGRAM

<https://college.mayo.edu/academics/residencies-and-fellowships/emergency-medical-services-fellowship-minnesota/>

[schlinger.peggy@mayo.edu](mailto:schlinger.peggy@mayo.edu)

*Training EMS Fellows since 2020*



## Basic Information

### Program Director

Matthew Sztajnkrzyer, MD, PhD, NRP

### Assistant/Associate Program Director

Anuradha Luke, MD, NRP

### Address

Mayo Clinic Department of Emergency Medicine GE-GR-G410, 200 1st Street SW, Rochester, Minnesota 55905

### Region

Midwest

### Extra year available?

No

### ACGME Accredited

Yes

### Year of ACGME Accreditation

2019

### Match Participation

Yes

### Percentage of ACGME years with enrolled fellow?

100

### Program Description

The Emergency Medical Services (EMS) Fellowship is a one-year fellowship that provides learners with clinical, research, and educational experiences uniquely available at the world-renowned Mayo Clinic. Through operational experience in diverse environments ranging from urban to rural, in MN, WI, and AZ, the EMS Fellowship is designed not simply to train EMS physicians but to develop future EMS leaders.

## Fellow Details

### Base Salary Before Any Moonlighting

\$60,000 - \$80,000

### Average Salary Including Any Moonlighting

\$100,000 - \$120,000

### Weekly Required ED Hours for Base Salary

Less than 10 hours

### Annual Vacation Time

3-4 weeks

### ACGME Fellow Board Exam Pass Rate

100%

### ACGME Fellows Practicing as EMS Medical Directors

34% - 66%

## EMS Faculty

### Number of EMS Board Certified Core Faculty

6

### EMS Core Faculty Ranks

Professor

Associate Professor

Assistant Professor

### EMS Faculty Medical Direction Roles

Air EMS agency

Ground EMS agency with less than 100 providers

Ground EMS agency with 100-500 providers

Paramedic initial certification training center

Volunteer/paid on call EMS agency

## EMS Experiences

### EMS Activities Offered

Disaster Medicine

Event/Mass Gathering Medicine

Fixed Wing EMS

Global EMS

Ground EMS

HEMS

Rural EMS

TEMS

USAR

### Fellow Driven Field Response Vehicle

Yes

### Description of Fellow Driven Vehicle

Shared vehicle

### Online Medical Control Opportunities

Yes

### Funded and Consistently Attended Fellow Experiences

NAEMSP Medical Director Course

NAEMSP Conference

Board Preparation Course

### Didactic Hour Modality

EMS specific conference time

## Clinical Practice

### **Institutions Where Fellows Work Clinically in ED**

Single site, but multiple sites optional

### **Required Clinical Sites**

N/A

### **Optional Clinical Sites**

Academic Medical Center

Community ED

Rural ED

Stand Alone ED

Tertiary Care/Level 1 Trauma Center

### **Do Fellows Practice as Independent Attendings in ED?**

Yes

### **Fellow Moonlighting Status**

Optional

## **PARTING WORDS**

Our core faculty is enthusiastically committed to training fellows not simply to become the best EMS physicians, but also to provide them with the skills and experiences necessary to enable them to become leaders in the specialty of Emergency Medical Services.

We are excited about our program and look forward to hearing from you!

# MEDICAL COLLEGE OF GEORGIA AT AUGUSTA UNIVERSITY

<https://www.augusta.edu/mcg/em/ed/fellowships/ems/index.php>

[jmcmanus@augusta.edu](mailto:jmcmanus@augusta.edu)

*Training EMS Fellows since 2013*

## Basic Information

**Program Director**  
John Mcmanus, MD, MBA, MCR

**Assistant/Associate Program Director**  
Bradley Golden,

**Address**  
1120 15th street, Pavilion II, Augusta, Georgia 30912

**Region**  
South

**Extra year available?**  
Optional

**ACGME Accredited**  
Yes

**Year of ACGME Accreditation**  
2015

**Match Participation**  
Yes

**Percentage of ACGME years with enrolled fellow?**  
95

### Program Description

Welcome future EMS leaders and thank you for considering the Medical College of Georgia. We feel that our unique EMS fellowship curriculum and internationally known faculty can provide EMS fellows with a thorough and exciting experience. Some of the unique MCG fellowship benefits include: possessing a dedicated EMS response vehicle, providing pre-hospital care at the famous Masters golf tournament and teaching & interacting with local, state and federal agencies.

## Fellow Details

**Base Salary Before Any Moonlighting**  
\$60,000 - \$80,000

**Average Salary Including Any Moonlighting**  
Greater than \$120,000

**Weekly Required ED Hours for Base Salary**  
Less than 10 hours

**Annual Vacation Time**  
1-2 weeks

**ACGME Fellow Board Exam Pass Rate**  
67%-99%

**ACGME Fellows Practicing as EMS Medical Directors**  
100%

## EMS Faculty

### Number of EMS Board Certified Core Faculty

3

### EMS Core Faculty Ranks

Professor

Associate Professor

### EMS Faculty Medical Direction Roles

Air EMS agency

Federal agency medical director

Ground EMS agency with less than 100 providers

Ground EMS agency with 100-500 providers

Paramedic initial certification training center

Volunteer/paid on call EMS agency

## EMS Experiences

### EMS Activities Offered

Disaster Medicine

Event/Mass Gathering Medicine

Global EMS

Ground EMS

HEMS

Rural EMS

TEMS

USAR

Wilderness Medicine

### Fellow Driven Field Response Vehicle

Yes

### Description of Fellow Driven Vehicle

Full time, take home vehicle for fellow

### Online Medical Control Opportunities

Yes

### Funded and Consistently Attended Fellow Experiences

NAEMSP Medical Director Course

NAEMSP Conference

ACEP course

### Didactic Hour Modality

EMS specific conference time

### **Institutions Where Fellows Work Clinically in ED**

Single site, but multiple sites optional

### **Required Clinical Sites**

Academic Medical Center  
Community ED

### **Optional Clinical Sites**

### **Do Fellows Practice as Independent Attendings in ED?**

Yes

### **Fellow Moonlighting Status**

Optional

## **PARTING WORDS**

Some of the unique MCG fellowship benefits include: possessing a dedicated EMS response vehicle, providing pre-hospital care at the famous Masters golf tournament and teaching & interacting with local, regional, national and international agencies (FEMA, DHS, DOJ, DoD, etc.). We have internationally recognized faculty.



# MEDICAL COLLEGE OF WISCONSIN

<https://www.mcw.edu/departments/emergency-medicine/education/fellowship-programs/emergency-medical-services>

[tilenz@mcw.edu](mailto:tilenz@mcw.edu)



*Training EMS Fellows since*

## Basic Information

### Program Director

Tim Lenz, MD, MPH

### Assistant/Associate Program Director

Tom Grawey, DO

### Address

8701 Watertown Plank Road, HUB, 3rd Floor, Milwaukee, Wisconsin 53226

### Region

Midwest

### Extra year available?

No

### ACGME Accredited

Yes

### Year of ACGME Accreditation

2014

### Match Participation

Yes

### Percentage of ACGME years with enrolled fellow?

91

### Program Description

The Division of EMS Medicine at the Medical College of Wisconsin offers a one-year EMS fellowship accredited by the ACGME. The fellowship is designed to develop the next generation of EMS leaders by offering unparalleled didactic and field experiences for all aspects of EMS. Successful completion from the EMS fellowship, including the development of a scholarly project, will satisfy the eligibility requirements for the ABEM EMS Certification Examination.

## Fellow Details

### Base Salary Before Any Moonlighting

\$60,000 - \$80,000

### Average Salary Including Any Moonlighting

Greater than \$120,000

### Weekly Required ED Hours for Base Salary

10 - 20 hours

### Annual Vacation Time

1-2 weeks

### ACGME Fellow Board Exam Pass Rate

100%

### ACGME Fellows Practicing as EMS Medical Directors

100%

## EMS Faculty

### Number of EMS Board Certified Core Faculty

7

### EMS Core Faculty Ranks

Professor  
Associate Professor  
Assistant Professor

### EMS Faculty Medical Direction Roles

Air EMS agency  
Ground EMS agency with less than 100 providers  
Ground EMS agency with 100-500 providers  
Ground EMS agency with 500-1000 providers  
Ground EMS agency with over 1000 providers  
Paramedic initial certification training center  
State medical director

## EMS Experiences

### EMS Activities Offered

Disaster Medicine  
Event/Mass Gathering Medicine  
Global EMS  
Ground EMS  
HEMS  
TEMS

### Fellow Driven Field Response Vehicle

Yes

### Description of Fellow Driven Vehicle

Shared vehicle

### Online Medical Control Opportunities

Yes

### Funded and Consistently Attended Fellow Experiences

NAEMSP Medical Director Course  
NAEMSP Conference  
Board Preparation Course

### Didactic Hour Modality

EMS specific conference time

**Institutions Where Fellows Work Clinically in ED**

Multiple sites required

**Required Clinical Sites**

Academic Medical Center

Community ED

Stand Alone ED

**Do Fellows Practice as Independent Attendings in ED?**

Yes

**Fellow Moonlighting Status**

Optional

## PARTING WORDS

Please feel free to reach out with an email or call to talk more about our fellowship. We are very proud to have been training outstanding medical directors for nearly 30 years. Best of luck with your fellowship search.



# METROHEALTH

<https://gme.metrohealth.org/emergency-medical-services-fellowship>

[epavlick@metrohealth.org](mailto:epavlick@metrohealth.org)

*Training EMS Fellows since 2018*

## Basic Information

### Program Director

Jeremiah Escajeda, MD

### Assistant/Associate Program Director

Thomas Collins, MD

### Address

2500 Metrohealth Drive, CLEVELAND, Ohio 44109

### Region

Midwest

### Extra year available?

No

### ACGME Accredited

Yes

### Year of ACGME Accreditation

2018

### Match Participation

Yes

### Percentage of ACGME years with enrolled fellow?

### Program Description

Mission Statement:

To prepare future EMS medical directors who can lead EMS agencies in compassionate, intelligent, and high quality prehospital emergency care that is responsive to the unique health needs and challenges of the community they serve, understanding that EMS can play a critical role in impacting public health, reducing health disparities, and assuring care to the most vulnerable members of the community...our fellow will work with Cleveland EMS, Metro Life Flight and many other EMS

## Fellow Details

### Base Salary Before Any Moonlighting

\$60,000 - \$80,000

### Average Salary Including Any Moonlighting

\$60,000 - \$80,000

### Weekly Required ED Hours for Base Salary

10 - 20 hours

### Annual Vacation Time

5-6 weeks

### ACGME Fellow Board Exam Pass Rate

100%

### ACGME Fellows Practicing as EMS Medical Directors

100%

## EMS Faculty

### Number of EMS Board Certified Core Faculty

5

### EMS Core Faculty Ranks

Associate Professor

### EMS Faculty Medical Direction Roles

Air EMS agency

Federal agency medical director

Ground EMS agency with less than 100 providers

Ground EMS agency with 100-500 providers

Paramedic initial certification training center

Volunteer/paid on call EMS agency

## EMS Experiences

### EMS Activities Offered

Disaster Medicine

Event/Mass Gathering Medicine

Global EMS

Ground EMS

HEMS

Rural EMS

TEMS

Wilderness Medicine

### Fellow Driven Field Response Vehicle

No

### Online Medical Control Opportunities

Yes

### Funded and Consistently Attended Fellow Experiences

NAEMSP Medical Director Course

NAEMSP Conference

### Didactic Hour Modality

EMS specific conference time

## Clinical Practice

### **Institutions Where Fellows Work Clinically in ED**

Multiple sites required

### **Required Clinical Sites**

Academic Medical Center

Community ED

Stand Alone ED

### **Do Fellows Practice as Independent Attendings in ED?**

Yes

### **Fellow Moonlighting Status**

Optional



Unsure

## EMS Faculty

### Number of EMS Board Certified Core Faculty

5

### EMS Core Faculty Ranks

Assistant Professor

### EMS Faculty Medical Direction Roles

Federal agency medical director

Ground EMS agency with less than 100 providers

Ground EMS agency with 500-1000 providers

Paramedic initial certification training center

State medical director

## EMS Experiences

### EMS Activities Offered

Disaster Medicine

Event/Mass Gathering Medicine

Fixed Wing EMS

Global EMS

Ground EMS

HEMS

Rural EMS

TEMS

### Fellow Driven Field Response Vehicle

Yes

### Description of Fellow Driven Vehicle

Shared vehicle

### Online Medical Control Opportunities

Yes

### Funded and Consistently Attended Fellow Experiences

NAEMSP Medical Director Course

NAEMSP Conference

TEEX Courses

CONTOMS

### Didactic Hour Modality

EMS specific conference time

**Institutions Where Fellows Work Clinically in ED**

Single site only

**Required Clinical Sites**

Tertiary Care/Level 1 Trauma Center

**Do Fellows Practice as Independent Attendings in ED?**

Yes

**Fellow Moonlighting Status**

Not available

# OHIOHEALTH DOCTORS HOSPITAL

<https://dhemergencymedicine.com>

[Rachel.Decker@ohiohealth.com](mailto:Rachel.Decker@ohiohealth.com)

*Training EMS Fellows since 2020*

## Basic Information

### Program Director

Robert Lowe, MD

### Assistant/Associate Program Director

Eric Cortez, MD

### Address

5100 West Broad Street, Columbus, Ohio 43228

### Region

Midwest

### Extra year available?

No

### ACGME Accredited

Yes

### Year of ACGME

Accreditation

2019

### Match Participation

Yes

### Percentage of ACGME

years with enrolled fellow?

50

### Program Description

We are an experiential learning program that includes operational and administrative involvement with urban, suburban and rural EMS agencies, disaster preparedness and response, and flight medicine. Other supplemental experiences include event medicine, mass gatherings, and TEMS. Fellows have integral roles in initial and continuing education for EMTs and paramedics. Fellows have the opportunity to maintain their primary specialty practice at one of our home hospital.

## Fellow Details

### Base Salary Before Any Moonlighting

\$60,000 - \$80,000

### Average Salary Including Any Moonlighting

\$80,000 - \$100,000

### Weekly Required ED Hours for Base Salary

Less than 10 hours

### Annual Vacation Time

3-4 weeks

### ACGME Fellow Board Exam Pass Rate

67%-99%

### ACGME Fellows Practicing as EMS Medical

Directors

34% - 66%

## EMS Faculty

### Number of EMS Board Certified Core Faculty

5

### EMS Core Faculty Ranks

Professor

Associate Professor

### EMS Faculty Medical Direction Roles

Ground EMS agency with less than 100 providers

Ground EMS agency with over 1000 providers

Paramedic initial certification training center

Volunteer/paid on call EMS agency

## EMS Experiences

### EMS Activities Offered

Event/Mass Gathering Medicine

Ground EMS

HEMS

Rural EMS

TEMS

USAR

### Fellow Driven Field Response Vehicle

No

### Online Medical Control Opportunities

No

### Funded and Consistently Attended Fellow Experiences

NAEMSP Medical Director Course

NAEMSP Conference

"Eagles" - Major Metropolitan Medical Directors meeting/conference

### Didactic Hour Modality

EMS specific conference time

**Institutions Where Fellows Work Clinically in ED**

Single site only

**Required Clinical Sites**

Community teaching ED

**Do Fellows Practice as Independent Attendings in ED?**

Yes

**Fellow Moonlighting Status**

Optional



# ORLANDO REGIONAL MEDICAL CENTER/ORANGE COUNTY EMS

<https://www.orlandohealth.com/medical-professionals/graduate-medical-education/fellowship-programs/ems-fellowship>

coleen.alford@orlandohealth.com

*Training EMS Fellows since 2005*



## Basic Information

**Program Director**  
Christian Zuver, MD

**Assistant/Associate Program Director**  
Christine Van Dillen, MD

**Address**  
4654 35th Street, Orlando, Florida 32811

**Region**  
South

**Extra year available?**  
No

**ACGME Accredited**   **Year of ACGME Accreditation**  
Yes   2014

**Match Participation**  
Yes

**Percentage of ACGME years with enrolled fellow?**  
90

### Program Description

The EMS Fellow is a fully funded, full- time employment position with the Orange County Government. Clinical hours are not a component of the fellowship; clinical work is available in a variety of venues in Central Florida.

We aspire to train competent, caring EMS physicians who will thrive as leaders and innovators and expand the evidence-based knowledge in prehospital medicine.

## Fellow Details

**Base Salary Before Any Moonlighting**  
\$60,000 - \$80,000

**Average Salary Including Any Moonlighting**  
Greater than \$120,000

**Weekly Required ED Hours for Base Salary**  
Less than 10 hours

**Annual Vacation Time**  
3-4 weeks

**ACGME Fellow Board Exam Pass Rate**  
67%-99%

**ACGME Fellows Practicing as EMS Medical Directors**  
67% - 99%

## EMS Faculty

### Number of EMS Board Certified Core Faculty

7

### EMS Core Faculty Ranks

Associate Professor

Assistant Professor

### EMS Faculty Medical Direction Roles

Ground EMS agency with 100-500 providers

Ground EMS agency with 500-1000 providers

Ground EMS agency with over 1000 providers

Paramedic initial certification training center

## EMS Experiences

### EMS Activities Offered

Disaster Medicine

Event/Mass Gathering Medicine

Ground EMS

HEMS

TEMS

USAR

### Fellow Driven Field Response Vehicle

Yes

### Description of Fellow Driven Vehicle

Shared vehicle

### Online Medical Control Opportunities

Yes

### Funded and Consistently Attended Fellow Experiences

NAEMSP Medical Director Course

NAEMSP Conference

### Didactic Hour Modality

EMS specific conference time

**Institutions Where Fellows Work Clinically in ED**

Single site, but multiple sites optional

**Required Clinical Sites**

none

**Optional Clinical Sites**

Community ED

Stand Alone ED

Tertiary Care/Level 1 Trauma Center

**Do Fellows Practice as Independent Attendings in ED?**

Yes

**Fellow Moonlighting Status**

Optional

# PENN STATE HERSHEY EMS FELLOWSHIP

<https://residency.med.psu.edu/programs/emergency-medical-services-fellowship/>

EMSFellowship@pennstatehealth.psu.edu

*Training EMS Fellows since 2010*



## Basic Information

### Program Director

Francis Mencl, MD, MS

### Assistant/Associate Program Director

Daniel Johnson, DO

### Address

500 University Dr., P.O. Box 850, Hershey, Pennsylvania 17033

### Region

Northeast

### Extra year available?

Optional

### ACGME Accredited

Yes

### Year of ACGME Accreditation

2016

### Match Participation

Yes

### Percentage of ACGME years with enrolled fellow?

90

### Program Description

With a large number of faculty, our program provides an individualized experience with flexibility to pursue personal clinical, professional and scholarly interests. Fellows have dedicated EMS physician field-response vehicles, are part of the critical care transport team (hospital-owned ground and air), work at Beaver Stadium (>100K seating) and with the tactical response team to provide medical direction and care on-scene and in-transport. Our fellows typically present at NAEMSP every year.

## Fellow Details

### Base Salary Before Any Moonlighting

\$80,000 - \$100,000

### Average Salary Including Any Moonlighting

Greater than \$120,000

### Weekly Required ED Hours for Base Salary

10 - 20 hours

### Annual Vacation Time

3-4 weeks

### ACGME Fellow Board Exam Pass Rate

100%

### ACGME Fellows Practicing as EMS Medical Directors

67% - 99%

## EMS Faculty

### Number of EMS Board Certified Core Faculty

5

### EMS Core Faculty Ranks

Professor

Associate Professor

Assistant Professor

### EMS Faculty Medical Direction Roles

Air EMS agency

Ground EMS agency with 100-500 providers

## EMS Experiences

### EMS Activities Offered

Disaster Medicine

Event/Mass Gathering Medicine

Global EMS

Ground EMS

HEMS

TEMS

USAR

Wilderness Medicine

### Fellow Driven Field Response Vehicle

Yes

### Description of Fellow Driven Vehicle

Shared vehicle

### Online Medical Control Opportunities

Yes

### Funded and Consistently Attended Fellow Experiences

NAEMSP Medical Director Course

NREMT, FDNY Search and Rescue Field Symposium

### Didactic Hour Modality

EMS specific conference time

**Institutions Where Fellows Work Clinically in ED**

Single site only

**Required Clinical Sites**

Academic Medical Center

**Do Fellows Practice as Independent Attendings in ED?**

Yes

**Fellow Moonlighting Status**

Optional

## PARTING WORDS

We care about you and your success. You will always be part of us and we will support you even after graduate



# REGIONS HOSPITAL EMS

<https://regionsem.org/fellowships/prehospital-medicine-ems-fellowship/>

[emsfellowship@healthpartners.com](mailto:emsfellowship@healthpartners.com)

*Training EMS Fellows since 2010*

## Basic Information

### Program Director

Kari Haley, MD

### Assistant/Associate Program Director

Aaron Burnett, MD

### Address

640 Jackson Street, Saint Paul, Minnesota 55101

### Region

Midwest

### Extra year available?

No

### ACGME Accredited

Yes

### Year of ACGME

Accreditation

2014

### Match Participation

Yes

### Percentage of ACGME

years with enrolled fellow?

90

### Program Description

For over 30 years Regions EMS has been leading the East Metro in providing state of the art prehospital emergency care. Our Prehospital Medicine/EMS Fellowship is accredited by the ACGME. Our belief that critical care begins in the street guides our coordination of prehospital and in-hospital emergency care. Our department provides a full spectrum of on and off line EMS medical direction including research, patient care, education and quality improvement. In 2010 we expanded to include our first

## Fellow Details

### Base Salary Before Any Moonlighting

\$60,000 - \$80,000

### Average Salary Including Any Moonlighting

Greater than \$120,000

### Weekly Required ED Hours for Base Salary

Less than 10 hours

### Annual Vacation Time

3-4 weeks

### ACGME Fellow Board Exam Pass Rate

100%

### ACGME Fellows Practicing as EMS Medical Directors

67% - 99%

## EMS Faculty

### Number of EMS Board Certified Core Faculty

3

### EMS Core Faculty Ranks

Associate Professor  
Assistant Professor

### EMS Faculty Medical Direction Roles

Ground EMS agency with less than 100 providers  
Ground EMS agency with 100-500 providers  
Paramedic initial certification training center  
Volunteer/paid on call EMS agency

## EMS Experiences

### EMS Activities Offered

Disaster Medicine  
Event/Mass Gathering Medicine  
Ground EMS  
HEMS  
Rural EMS  
TEMS  
USAR

### Fellow Driven Field Response Vehicle

Yes

### Description of Fellow Driven Vehicle

Full time, take home vehicle for fellow

### Online Medical Control Opportunities

Yes

### Funded and Consistently Attended Fellow Experiences

NAEMSP Medical Director Course  
NAEMSP Conference

### Didactic Hour Modality

EMS specific conference time

**Institutions Where Fellows Work Clinically in ED**

Multiple sites required

**Required Clinical Sites**

Community ED

Rural ED

**Do Fellows Practice as Independent Attendings in ED?**

Yes

**Fellow Moonlighting Status**

Optional

## PARTING WORDS

The EMS component of the fellowship aims to integrate the fellow into all aspects of on and off line medical direction. Fellows will be provided with a radio for home online medical control as well as access to a response vehicle for on-scene physician response. At Regions, we supervise 40 EMS agencies and 1500 providers over a broad geographic area covering 2 states. Our agencies range from urban to rural, full time to volunteer, and in house vs home response. There are single tiered, dual t

# RWJ BARNABAS HEALTH AT NEWARK BETH ISRAEL MEDICAL CENTER

<https://www.rwjbh.org/for-health-care-professionals/medical-education/newark-beth-israel-medical-center/ems-disaster-medicine-fellowship/>

Navin.Ariyaprakai@Rutgers.edu

*Training EMS Fellows since 2008*



## Basic Information

**Program Director**  
Navin Ariyaprakai, MD, FAEMS, FACEP

**Assistant/Associate Program Director**  
Matthew Steenberg, MD

**Address**  
201 Lyons Ave, E/L 3, Newark, New Jersey 07112

**Region**  
Northeast

**Extra year available?**  
Optional

**ACGME Accredited**  
Yes

**Year of ACGME Accreditation**  
2014

**Match Participation**  
Yes

**Percentage of ACGME years with enrolled fellow?**  
100

### Program Description

The Rutgers Health EMS & Disaster Medicine Fellowship partners with RWJBarnabas Health Newark Beth Israel to present a fellowship with a wide array of educational activities and opportunities for the EMS Fellow. We start the year with a one-month intensive orientation to ensure competencies of our new fellows and instruct then on adult learning, Prehospital operations, Tactical Medicine course, Emergency Vehicle Operations, Rescue Operations and more. Our partners include Federal, State and Local

## Fellow Details

**Base Salary Before Any Moonlighting**  
\$60,000 - \$80,000

**Average Salary Including Any Moonlighting**  
\$80,000 - \$100,000

**Weekly Required ED Hours for Base Salary**  
10 - 20 hours

**Annual Vacation Time**  
3-4 weeks

**ACGME Fellow Board Exam Pass Rate**  
67%-99%

**ACGME Fellows Practicing as EMS Medical Directors**  
67% - 99%

## EMS Faculty

**Number of EMS Board Certified Core Faculty**  
10

**EMS Core Faculty Ranks**  
Associate Professor

**EMS Faculty Medical Direction Roles**  
Air EMS agency  
Federal agency medical director  
Ground EMS agency with less than 100 providers  
Ground EMS agency with 100-500 providers  
Ground EMS agency with 500-1000 providers  
Paramedic initial certification training center  
Volunteer/paid on call EMS agency

## EMS Experiences

**EMS Activities Offered**  
Disaster Medicine  
Event/Mass Gathering Medicine  
Fixed Wing EMS  
Global EMS  
Ground EMS  
HEMS  
TEMS  
USAR  
Wilderness Medicine

**Fellow Driven Field Response Vehicle**  
Yes

**Description of Fellow Driven Vehicle**  
Call schedule, take home vehicle for fellow

**Online Medical Control Opportunities**  
Yes

**Funded and Consistently Attended Fellow Experiences**  
NAEMSP Medical Director Course  
NAEMSP Conference  
TEEX Courses

**Didactic Hour Modality**  
EMS specific conference time

**Institutions Where Fellows Work Clinically in ED**

Multiple sites required

**Required Clinical Sites**

Academic Medical Center

Community ED

**Do Fellows Practice as Independent Attendings in ED?**

Yes

**Fellow Moonlighting Status**

Optional

## PARTING WORDS

Come join our EMS Family! We are always improving and pushing the speciality forward.



<https://www.slhn.org/graduate-medical-education/residencies-and-fellowships/emergency-medical-services-fellowship>

bryan.wilson@sluhn.org

*Training EMS Fellows since 2023*



## Basic Information

### Program Director

Bryan Wilson, MD, FAEMS

### Assistant/Associate Program Director

### Address

801 Ostrum St., Bethlehem, Pennsylvania 18015

### Region

Northeast

### Extra year available?

No

### ACGME Accredited

Yes

### Year of ACGME Accreditation

### Match Participation

Yes

### Percentage of ACGME years with enrolled fellow?

100

### Program Description

St. Luke's EMS Fellowship accepts two fellows annually. Training spans various EMS frameworks: hospital-based, fire service, municipal and private 3rd service, and hospital-owned flight service. Fellows will work with residents and medical students in the ED and on EMS rotations. A Physician Response Vehicle, equipped with blood and advanced capabilities, will be available for fellows to respond to calls with multiple partner agencies.

## Fellow Details

### Base Salary Before Any Moonlighting

\$80,000 - \$100,000

### Average Salary Including Any Moonlighting

Greater than \$120,000

### Weekly Required ED Hours for Base Salary

10 - 20 hours

### Annual Vacation Time

3-4 weeks

### ACGME Fellow Board Exam Pass Rate

### ACGME Fellows Practicing as EMS Medical Directors

100%

## EMS Faculty

### Number of EMS Board Certified Core Faculty

3

### EMS Core Faculty Ranks

Associate Professor  
Assistant Professor

### EMS Faculty Medical Direction Roles

Air EMS agency  
Ground EMS agency with less than 100 providers  
Paramedic initial certification training center  
Volunteer/paid on call EMS agency

## EMS Experiences

### EMS Activities Offered

Event/Mass Gathering Medicine  
Fixed Wing EMS  
Ground EMS  
HEMS  
TEMS

### Fellow Driven Field Response Vehicle

Yes

### Description of Fellow Driven Vehicle

Call schedule, take home vehicle for fellow

### Online Medical Control Opportunities

Yes

### Funded and Consistently Attended Fellow Experiences

NAEMSP Medical Director Course  
NAEMSP Conference  
Board Preparation Course  
TEEX Courses  
Other local conference opportunities: Fellows get to choose a course/conference of their interest to attend

### Didactic Hour Modality

EMS specific conference time

### **Institutions Where Fellows Work Clinically in ED**

Single site, but multiple sites optional

### **Required Clinical Sites**

Academic Medical Center

### **Optional Clinical Sites**

Academic Medical Center

Community ED

Rural ED

Tertiary Care/Level 1 Trauma Center

### **Do Fellows Practice as Independent Attendings in ED?**

Yes

### **Fellow Moonlighting Status**

Optional

## **PARTING WORDS**

St. Luke's is dedicated to the community, and we have the support of the network administration for this program. We tailor our curriculum to fit your interests. Come meet us and see what we're all about!



# STANFORD

<https://emed.stanford.edu/education/fellowships/ems.html>

[mjvernon@stanford.edu](mailto:mjvernon@stanford.edu)

*Training EMS Fellows since 1990s*

## Basic Information

### Program Director

Marc Gautreau, MD, MBA

### Assistant/Associate Program Director

Marc Berenson, MD

### Address

900 Welch Road, Suite 350, Palo Alto, California

### Region

West

### Extra year available?

Required

### ACGME Accredited

Yes

### Year of ACGME Accreditation

2017

### Match Participation

Yes

### Percentage of ACGME years with enrolled fellow?

100

### Program Description

We are a comprehensive academic program with opportunities in all aspects of EMS including global health, wilderness, research, disaster medicine, event medicine and helicopter EMS. Our ground EMS is largely based on fire service with departments ranging in size from 70,000 population to 1 million. We provide base station medical control to San Mateo County as well, and operate a university based EMT training program; a paramedic training program is in development.

## Fellow Details

### Base Salary Before Any Moonlighting

Greater than \$120,000

### Average Salary Including Any Moonlighting

Greater than \$120,000

### Weekly Required ED Hours for Base Salary

Less than 10 hours

### Annual Vacation Time

3-4 weeks

### ACGME Fellow Board Exam Pass Rate

100%

### ACGME Fellows Practicing as EMS Medical Directors

100%

## EMS Faculty

### Number of EMS Board Certified Core Faculty

5

### EMS Core Faculty Ranks

Professor

Associate Professor

Assistant Professor

### EMS Faculty Medical Direction Roles

Air EMS agency

Ground EMS agency with less than 100 providers

Ground EMS agency with 100-500 providers

Volunteer/paid on call EMS agency

## EMS Experiences

### EMS Activities Offered

Disaster Medicine

Event/Mass Gathering Medicine

Global EMS

Ground EMS

HEMS

Rural EMS

USAR

Wilderness Medicine

### Fellow Driven Field Response Vehicle

No

### Online Medical Control Opportunities

Yes

### Funded and Consistently Attended Fellow Experiences

NAEMSP Medical Director Course

NAEMSP Conference

California EMDAC and other conferences

### Didactic Hour Modality

EMS specific conference time

**Institutions Where Fellows Work Clinically in ED**

Single site only

**Required Clinical Sites**

Academic Medical Center

Community ED

**Do Fellows Practice as Independent Attendings in ED?**

Yes

**Fellow Moonlighting Status**

Required

## PARTING WORDS

First year fellows work clinically at local community hospitals offering moonlighting - pay is in addition to fellowship stipend. In second year they work as attendings in the main Stanford emergency department. Also get \$25,000 tuition assistance per year toward advanced degree (MPH, MBA, MPA, etc.)



# STONY BROOK UNIVERSITY EMS FELLOWSHIP

<https://renaissance.stonybrookmedicine.edu/emergency-medicine/fellowships/ems>

robert.marshall@stonybrookmedicine.edu

*Training EMS Fellows since 2019*

## Basic Information

**Program Director**  
Trevor Marshall, MD

**Assistant/Associate Program Director**  
Robert Marshall,

**Address**  
Stony Brook University, Department of Emergency Medicine, Stony Brook, New York 11794-8350

**Region**  
Northeast

**Extra year available?**  
No

**ACGME Accredited**  
Yes

**Year of ACGME Accreditation**  
2019

**Match Participation**  
Yes

**Percentage of ACGME years with enrolled fellow?**

**Program Description**

## Fellow Details

**Base Salary Before Any Moonlighting**  
\$100,000 - \$120,000

**Average Salary Including Any Moonlighting**  
\$100,000 - \$120,000

**Weekly Required ED Hours for Base Salary**  
10 - 20 hours

**Annual Vacation Time**  
3-4 weeks

**ACGME Fellow Board Exam Pass Rate**  
100%

**ACGME Fellows Practicing as EMS Medical Directors**  
67% - 99%

## EMS Faculty

### **Number of EMS Board Certified Core Faculty**

4

### **EMS Core Faculty Ranks**

Professor

Associate Professor

Assistant Professor

### **EMS Faculty Medical Direction Roles**

Air EMS agency

Ground EMS agency with less than 100 providers

Ground EMS agency with 100-500 providers

Paramedic initial certification training center

Volunteer/paid on call EMS agency

## EMS Experiences

### **EMS Activities Offered**

Disaster Medicine

Event/Mass Gathering Medicine

Global EMS

Ground EMS

HEMS

Rural EMS

USAR

### **Fellow Driven Field Response Vehicle**

No

### **Online Medical Control Opportunities**

Yes

### **Funded and Consistently Attended Fellow Experiences**

NAEMSP Medical Director Course

NAEMSP Conference

### **Didactic Hour Modality**

EMS specific conference time

**Institutions Where Fellows Work Clinically in ED**

Single site only

**Required Clinical Sites**

Academic Medical Center

Tertiary Care/Level 1 Trauma Center

**Do Fellows Practice as Independent Attendings in ED?**

Yes

**Fellow Moonlighting Status**

# SUNY UPSTATE MEDICAL UNIVERSITY

<https://www.upstate.edu/emergency/education/fellowships/ems.php>

EMSFELLOWSHIP@upstate0.onmicrosoft.com

*Training EMS Fellows since 2003 (ACGME accredited in October 2012)*

## Basic Information

**Program Director**  
Jordan Holliday, MD

**Assistant/Associate Program Director**

**Address**  
550 E Genesee St, Suite 103, Syracuse, New York 13202

**Region**  
Northeast

**Extra year available?**  
No

**ACGME Accredited**  
Yes

**Year of ACGME Accreditation**

**Match Participation**  
Yes

**Percentage of ACGME years with enrolled fellow?**  
77

### Program Description

Continuously accredited since October 2012. Provides an introduction to all facets of EMS and disaster preparedness and response to prepare graduating fellows for a smooth transition into various medical director roles across widespread locations. Faculty-directed agencies in urban, suburban, and rural settings that participate in 911 emergency responses and interfacility transport. Robust air medical and tactical opportunities are encouraged.

## Fellow Details

**Base Salary Before Any Moonlighting**  
\$100,000 - \$120,000

**Average Salary Including Any Moonlighting**  
Greater than \$120,000

**Weekly Required ED Hours for Base Salary**  
Less than 10 hours

**Annual Vacation Time**  
3-4 weeks

**ACGME Fellow Board Exam Pass Rate**  
67%-99%

**ACGME Fellows Practicing as EMS Medical Directors**  
67% - 99%

## EMS Faculty

### Number of EMS Board Certified Core Faculty

8

### EMS Core Faculty Ranks

Associate Professor

Assistant Professor

### EMS Faculty Medical Direction Roles

Air EMS agency

Ground EMS agency with less than 100 providers

Ground EMS agency with 100-500 providers

Ground EMS agency with 500-1000 providers

Paramedic initial certification training center

Volunteer/paid on call EMS agency

## EMS Experiences

### EMS Activities Offered

Disaster Medicine

Event/Mass Gathering Medicine

Fixed Wing EMS

Ground EMS

HEMS

Rural EMS

TEMS

Wilderness Medicine

### Fellow Driven Field Response Vehicle

Yes

### Description of Fellow Driven Vehicle

Full time, take home vehicle for fellow

### Online Medical Control Opportunities

Yes

### Funded and Consistently Attended Fellow Experiences

NAEMSP Medical Director Course

NAEMSP Conference

CONTOMS

AHLS

### Didactic Hour Modality

EMS specific conference time

**Institutions Where Fellows Work Clinically in ED**

Single site, but multiple sites optional

**Required Clinical Sites**

Academic Medical Center

Tertiary Care/Level 1 Trauma Center

**Optional Clinical Sites**

Community ED

Pediatric ED

**Do Fellows Practice as Independent Attendings in ED?**

Yes

**Fellow Moonlighting Status**

Optional

## PARTING WORDS

Thank you for considering SUNY Upstate's EMS Fellowship Program. Upstate aims to create a tailored educational experience to support ongoing professional development with consideration of personal goals and previous EMS experience of the incoming fellow.



# THE OHIO STATE UNIVERSITY

<https://medicine.osu.edu/departments/emergency-medicine/education/fellowships/ems-fellowship>

jeanine.hatfield@osumc.edu

*Training EMS Fellows since 2013*

## Basic Information

### Program Director

Ashish Panchal, MD, PhD

### Assistant/Associate Program Director

Travis Sharkey-Toppen, MD, PhD

### Address

776 Prior Hall, 376 W. 10th Ave., Columbus, Ohio 43210

### Region

Midwest

### Extra year available?

No

### ACGME Accredited

Yes

### Year of ACGME Accreditation

2014

### Match Participation

Yes

### Percentage of ACGME years with enrolled fellow?

100

### Program Description

The Ohio State University Department of Emergency Medicine and the Center for EMS jointly sponsor a fellowship in emergency medical services. The purpose of the EMS Fellowship Program is to prepare emergency physicians to be leaders in prehospital care. Fellows gain excellent clinical experience in the prehospital setting by providing medical oversight and on-scene direction with the Columbus Division of Fire, one of the largest metropolitan EMS agencies in the country.

## Fellow Details

### Base Salary Before Any Moonlighting

\$60,000 - \$80,000

### Average Salary Including Any Moonlighting

\$60,000 - \$80,000

### Weekly Required ED Hours for Base Salary

10 - 20 hours

### Annual Vacation Time

3-4 weeks

### ACGME Fellow Board Exam Pass Rate

67%-99%

### ACGME Fellows Practicing as EMS Medical Directors

100%

## EMS Faculty

### Number of EMS Board Certified Core Faculty

4

### EMS Core Faculty Ranks

Professor

Associate Professor

Assistant Professor

### EMS Faculty Medical Direction Roles

Air EMS agency

Ground EMS agency with less than 100 providers

Ground EMS agency with 100-500 providers

## EMS Experiences

### EMS Activities Offered

Disaster Medicine

Event/Mass Gathering Medicine

Ground EMS

### Fellow Driven Field Response Vehicle

No

### Online Medical Control Opportunities

Yes

### Funded and Consistently Attended Fellow Experiences

NAEMSP Medical Director Course

NAEMSP Conference

### Didactic Hour Modality

EMS specific conference time

**Institutions Where Fellows Work Clinically in ED**

Multiple sites required

**Required Clinical Sites**

Community ED

Stand Alone ED

**Do Fellows Practice as Independent Attendings in ED?**

Yes

**Fellow Moonlighting Status**

Optional

# UCSF EMS AND DISASTER MEDICINE

<https://emergency.ucsf.edu/ems-disaster-medicine-fellowship#>

dawnee.wong@ucsf.edu

*Training EMS Fellows since 2009*



## Basic Information

### Program Director

Eric Silverman, MD, MPH

### Assistant/Associate Program Director

Mary Mercer, MD, MPH

### Address

Department of Emergency Medicine, UCSF School of Medicine, 521 Parnassus Avenue, San Francisco, California 94143

### Region

West

### Extra year available?

Optional

### ACGME Accredited

Yes

### Year of ACGME Accreditation

2014

### Match Participation

Yes

### Percentage of ACGME years with enrolled fellow?

100

### Program Description

UCSF offers one and two year fellowships in EMS and Disaster Medicine for emergency medicine residency trained physicians. The program provides training and education in all aspects of EMS and Disaster Medicine including administration, medical oversight, research, teaching, and clinical components. Fellows work with EMS faculty in two dynamic and diverse EMS systems (San Francisco and Alameda) and practice EM at a Level 1 Trauma Center.

## Fellow Details

### Base Salary Before Any Moonlighting

\$100,000 - \$120,000

### Average Salary Including Any Moonlighting

Greater than \$120,000

### Weekly Required ED Hours for Base Salary

10 - 20 hours

### Annual Vacation Time

3-4 weeks

### ACGME Fellow Board Exam Pass Rate

100%

### ACGME Fellows Practicing as EMS Medical Directors

67% - 99%

## EMS Faculty

**Number of EMS Board Certified Core Faculty**  
12

**EMS Core Faculty Ranks**

Professor  
Associate Professor  
Assistant Professor

**EMS Faculty Medical Direction Roles**

Air EMS agency  
Ground EMS agency with less than 100 providers  
Ground EMS agency with 100-500 providers  
Ground EMS agency with 500-1000 providers  
Paramedic initial certification training center  
Volunteer/paid on call EMS agency

## EMS Experiences

**EMS Activities Offered**

Disaster Medicine  
Event/Mass Gathering Medicine  
Global EMS  
Ground EMS  
HEMS  
Rural EMS  
TEMS  
USAR  
Wilderness Medicine

**Fellow Driven Field Response Vehicle**

No

**Online Medical Control Opportunities**

Yes

**Funded and Consistently Attended Fellow Experiences**

NAEMSP Medical Director Course  
NAEMSP Conference  
Board Preparation Course  
TEEX Courses  
FEMA Courses

**Didactic Hour Modality**

EMS specific conference time

## Clinical Practice

### **Institutions Where Fellows Work Clinically in ED**

Single site only

### **Required Clinical Sites**

Academic Medical Center

Tertiary Care/Level 1 Trauma Center

### **Do Fellows Practice as Independent Attendings in ED?**

Yes

### **Fellow Moonlighting Status**

Optional

## **PARTING WORDS**

We look forward to welcoming you to San Francisco and the Bay Area, and all that our community has to offer in EMS and Disaster Medicine innovations!

# UNIVERSITY AT BUFFALO

<https://medicine.buffalo.edu/departments/emergency/education/fellowships/ems.html>

[ubmdems@buffalo.edu](mailto:ubmdems@buffalo.edu)

*Training EMS Fellows since*



## Basic Information

### Program Director

Johanna Innes, MD NRP FACEP FAEMS

### Assistant/Associate Program Director

Michael O'Brien, MD FACEP FAEMS FAMP  
FAOM NRP

### Address

77 Goodell St, Suite 340, Buffalo, New York 14203

### Region

Northeast

### Extra year available?

No

### ACGME Accredited

Yes

### Year of ACGME Accreditation

2014

### Match Participation

Yes

### Percentage of ACGME years with enrolled fellow?

100

### Program Description

Buffalo, N.Y. is the center of a large regional EMS system for the surrounding Western region of New York State. Our EMS Fellows provide operational medical direction for municipal, private, police and volunteer EMS agencies. Each fellow enjoys a take-home response vehicle, HEMS experience (if desired), as well as both volunteer and paid fire experiences.

## Fellow Details

### Base Salary Before Any Moonlighting

\$80,000 - \$100,000

### Average Salary Including Any Moonlighting

Greater than \$120,000

### Weekly Required ED Hours for Base Salary

10 - 20 hours

### Annual Vacation Time

7+ weeks

### ACGME Fellow Board Exam Pass Rate

67%-99%

### ACGME Fellows Practicing as EMS Medical Directors

67% - 99%

## EMS Faculty

### Number of EMS Board Certified Core Faculty

10

### EMS Core Faculty Ranks

Professor

Assistant Professor

### EMS Faculty Medical Direction Roles

Air EMS agency

Ground EMS agency with less than 100 providers

Ground EMS agency with 100-500 providers

Paramedic initial certification training center

Volunteer/paid on call EMS agency

## EMS Experiences

### EMS Activities Offered

Disaster Medicine

Event/Mass Gathering Medicine

Fixed Wing EMS

Global EMS

Ground EMS

HEMS

Rural EMS

TEMS

USAR

Wilderness Medicine

### Fellow Driven Field Response Vehicle

Yes

### Description of Fellow Driven Vehicle

Full time, take home vehicle for fellow

### Online Medical Control Opportunities

Yes

### Funded and Consistently Attended Fellow Experiences

NAEMSP Medical Director Course

NAEMSP Conference

### Didactic Hour Modality

EMS specific conference time

**Institutions Where Fellows Work Clinically in ED**

Single site only

**Required Clinical Sites**

Academic Medical Center

Tertiary Care/Level 1 Trauma Center

**Do Fellows Practice as Independent Attendings in ED?**

Yes

**Fellow Moonlighting Status**

Optional



# UNIVERSITY OF WISCONSIN HOSPITALS AND CLINICS

<https://emed.wisc.edu/education/fellowships/ems-fellowship/>

[mmancera@medicine.wisc.edu](mailto:mmancera@medicine.wisc.edu)

*Training EMS Fellows since 2019*



**BerbeeWalsh Department of  
Emergency Medicine**

UNIVERSITY OF WISCONSIN  
SCHOOL OF MEDICINE AND PUBLIC HEALTH

## Basic Information

**Program Director**  
Michael Mancera, MD

**Assistant/Associate Program Director**

**Address**

800 University Bay Drive Suite 310, Mail Code 9123, Madison, Wisconsin 53705

**Region**

Midwest

**Extra year available?**

No

**ACGME Accredited**

Yes

**Year of ACGME  
Accreditation**

2019

**Match Participation**

Yes

**Percentage of ACGME  
years with enrolled  
fellow?**

80

**Program Description**

Our fellowship provides comprehensive training in the clinical, administrative, educational, and research aspects of emergency medical services for learners to become leaders of complex ground and air prehospital systems and gain the tools needed to systematically advance quality of care for patients and communities.

## Fellow Details

**Base Salary Before Any Moonlighting**

\$60,000 - \$80,000

**Average Salary Including Any Moonlighting**

\$100,000 - \$120,000

**Weekly Required ED Hours for Base Salary**

10 - 20 hours

**Annual Vacation Time**

3-4 weeks

**ACGME Fellow Board Exam Pass Rate**

100%

**ACGME Fellows Practicing as EMS Medical  
Directors**

100%

## EMS Faculty

### Number of EMS Board Certified Core Faculty

7

### EMS Core Faculty Ranks

Associate Professor

Assistant Professor

### EMS Faculty Medical Direction Roles

Air EMS agency

Ground EMS agency with less than 100 providers

Ground EMS agency with 100-500 providers

Paramedic initial certification training center

Volunteer/paid on call EMS agency

## EMS Experiences

### EMS Activities Offered

Disaster Medicine

Event/Mass Gathering Medicine

Ground EMS

HEMS

Rural EMS

TEMS

### Fellow Driven Field Response Vehicle

Yes

### Description of Fellow Driven Vehicle

Call schedule, take home vehicle for fellow

### Online Medical Control Opportunities

Yes

### Funded and Consistently Attended Fellow Experiences

NAEMSP Medical Director Course

NAEMSP Conference

Board Preparation Course

Additional funding for courses is available

### Didactic Hour Modality

EMS specific conference time

**Institutions Where Fellows Work Clinically in ED**

Single site, but multiple sites optional

**Required Clinical Sites**

Community ED

**Optional Clinical Sites**

Academic Medical Center

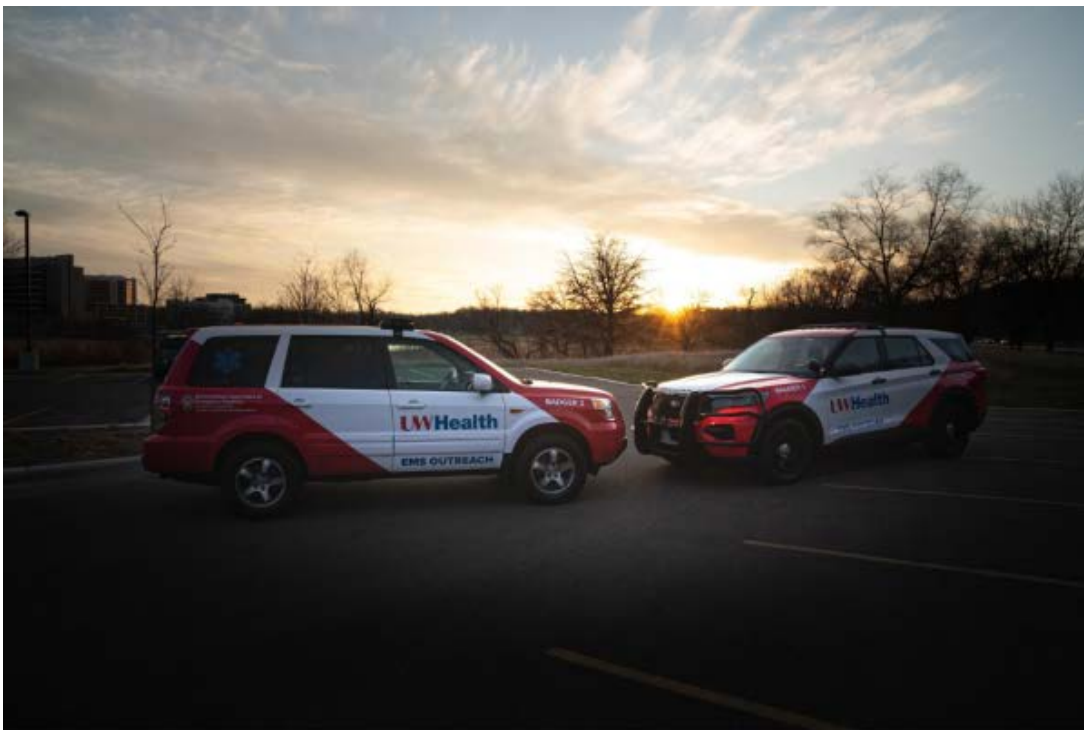
HEMS

**Do Fellows Practice as Independent Attendings in ED?**

Yes

**Fellow Moonlighting Status**

Optional



# UMASS CHAN MEDICAL SCHOOL- BAYSTATE EMS FELLOWSHIP

<https://www.prehospitaldisastermedicine.org/pageem>

[kenneth.knowles@baystatehealth.org](mailto:kenneth.knowles@baystatehealth.org)

*Training EMS Fellows since 2022*

## Basic Information

**Program Director**  
Kenneth Knowles, MD

**Assistant/Associate Program Director**  
Seth Kelly, MD

**Address**  
759 Chestnut Street, Springfield, Massachusetts 01095

**Region**  
Northeast

**Extra year available?**  
No

**ACGME Accredited**  
Yes

**Year of ACGME  
Accreditation**

**Match Participation**  
Yes

**Percentage of ACGME  
years with enrolled  
fellow?**  
50

### Program Description

Located in Western, MA, the fellowship offers exposure to a wide range of EMS services, critical care transport, air medical services, and regional tactical, search and rescue, and technical rescue teams. The fellow has use of the physician response vehicle for responding in the field. Weekly didactics are provided with EMS board certified/eligible program faculty. The fellow works independently as an attending in the systems various Emergency Departments.

## Fellow Details

**Base Salary Before Any Moonlighting**  
\$80,000 - \$100,000

**Average Salary Including Any Moonlighting**  
\$80,000 - \$100,000

**Weekly Required ED Hours for Base Salary**  
Less than 10 hours

**Annual Vacation Time**  
3-4 weeks

**ACGME Fellow Board Exam Pass Rate**

**ACGME Fellows Practicing as EMS Medical  
Directors**  
100%

## EMS Faculty

### Number of EMS Board Certified Core Faculty

4

### EMS Core Faculty Ranks

Assistant Professor

### EMS Faculty Medical Direction Roles

Ground EMS agency with less than 100 providers

Ground EMS agency with 100-500 providers

Paramedic initial certification training center

Volunteer/paid on call EMS agency

## EMS Experiences

### EMS Activities Offered

Disaster Medicine

Event/Mass Gathering Medicine

Ground EMS

HEMS

Rural EMS

TEMS

USAR

Wilderness Medicine

### Fellow Driven Field Response Vehicle

Yes

### Description of Fellow Driven Vehicle

Shared vehicle

### Online Medical Control Opportunities

Yes

### Funded and Consistently Attended Fellow Experiences

NAEMSP Medical Director Course

NAEMSP Conference

Board Preparation Course

### Didactic Hour Modality

EMS specific conference time

**Institutions Where Fellows Work Clinically in ED**

Multiple sites required

**Required Clinical Sites**

Academic Medical Center

Community ED

Tertiary Care/Level 1 Trauma Center

**Do Fellows Practice as Independent Attendings in ED?**

Yes

**Fellow Moonlighting Status**

Optional

## PARTING WORDS

The UMass Chan Medical School – Baystate EMS Fellowship is a 1-year ACGME accredited program located in beautiful Western Massachusetts. We aim to build strong EMS physicians who have the skills to provide all aspects of EMS medical direction, be health system leaders, and, simultaneously, bring a higher level of care to the prehospital setting.

# UNIVERSITY HOSPITALS CLEVELAND MEDICAL CENTER

<https://www.uhhospitals.org/medical-education/emergency-medicine-medical-education/fellowships/emergency-medical-services-fellowship>

Jeffrey.Luk@uhhospitals.org

*Training EMS Fellows since 2019*

## Basic Information

**Program Director**  
Jeffrey Luk, MD, MS

**Assistant/Associate Program Director**  
Frank Forde, MD

**Address**  
11100 Euclid Ave, Center for Emergency Medicine, LKSD B517/Mailstop  
5064, Cleveland, Ohio 44106

**Region**  
Midwest

**Extra year available?**  
No

**ACGME Accredited**  
Yes

**Year of ACGME Accreditation**  
2017

**Match Participation**  
Yes

**Percentage of ACGME years with enrolled fellow?**  
38

### Program Description

The University Hospitals Cleveland Medical Center Department of Emergency Medicine, in collaboration with Case Western Reserve University, offers an ACGME-Accredited EMS Fellowship Program. The program will provide the fellow with the fundamentals of prehospital medicine as well as a comprehensive experience in EMS medical direction over the course of one year. Multiple opportunities exist for professional growth within the areas of education, clinical expertise, and research.

## Fellow Details

**Base Salary Before Any Moonlighting**  
\$60,000 - \$80,000

**Average Salary Including Any Moonlighting**  
\$80,000 - \$100,000

**Weekly Required ED Hours for Base Salary**  
10 - 20 hours

**Annual Vacation Time**  
3-4 weeks

**ACGME Fellow Board Exam Pass Rate**  
0%

**ACGME Fellows Practicing as EMS Medical Directors**  
34% - 66%

## EMS Faculty

**Number of EMS Board Certified Core Faculty**  
5

**EMS Core Faculty Ranks**  
Associate Professor  
Assistant Professor

**EMS Faculty Medical Direction Roles**  
Air EMS agency  
Ground EMS agency with less than 100 providers

## EMS Experiences

**EMS Activities Offered**  
Disaster Medicine  
Event/Mass Gathering Medicine  
Ground EMS  
HEMS  
Rural EMS  
TEMS  
USAR

**Fellow Driven Field Response Vehicle**  
No

**Online Medical Control Opportunities**  
Yes

**Funded and Consistently Attended Fellow Experiences**  
NAEMSP Medical Director Course  
NAEMSP Conference

**Didactic Hour Modality**  
EMS specific conference time

**Institutions Where Fellows Work Clinically in ED**

Multiple sites required

**Required Clinical Sites**

Academic Medical Center

Community ED

Tertiary Care/Level 1 Trauma Center

**Do Fellows Practice as Independent Attendings in ED?**

Yes

**Fellow Moonlighting Status**

Optional

## PARTING WORDS

We provide a broad based experience for the fellow with exposure to fire based 911 response, private 911 response, helicopter EMS, and critical care transport. We have ample opportunities for event medicine, disaster medicine, and tactical medicine. We try to tailor the fellowship to the fellow's interests while still meeting ACGME requirements. Cost of living is very reasonable with plenty to do during your time off. We look forward to hearing from you!

# UNIVERSITY OF ALABAMA AT BIRMINGHAM

<https://www.uab.edu/medicine/em/education/fellowships/ems-fellowship>

[drobinett@uabmc.edu](mailto:drobinett@uabmc.edu)

*Training EMS Fellows since 2003*



## Basic Information

### Program Director

Adam Robinett,

### Assistant/Associate Program Director

Will Ferguson

### Address

619 19th Street South, OHB 251A, Birmingham, Alabama 35249

### Region

South

### Extra year available?

No

### ACGME Accredited

Yes

### Year of ACGME Accreditation

2020

### Match Participation

Yes

### Percentage of ACGME years with enrolled fellow?

80

### Program Description

The EMS fellowship is dedicated to providing extensive experience in clinical pre-hospital medicine as well as education, program administration, quality improvement, and research. The Office of EMS is a clinical leader in pre-hospital education at the University of Alabama Hospital. Partnering with the Birmingham Regional Emergency Medical Services System (BREMSS), we provide education, medical direction, and quality improvement/assurance to a nine-county region in Alabama.

## Fellow Details

### Base Salary Before Any Moonlighting

\$60,000 - \$80,000

### Average Salary Including Any Moonlighting

\$100,000 - \$120,000

### Weekly Required ED Hours for Base Salary

Less than 10 hours

### Annual Vacation Time

3-4 weeks

### ACGME Fellow Board Exam Pass Rate

67%-99%

### ACGME Fellows Practicing as EMS Medical Directors

100%

## EMS Faculty

### Number of EMS Board Certified Core Faculty

5

### EMS Core Faculty Ranks

Associate Professor

Assistant Professor

### EMS Faculty Medical Direction Roles

Air EMS agency

Ground EMS agency with less than 100 providers

Ground EMS agency with 100-500 providers

Ground EMS agency with 500-1000 providers

Paramedic initial certification training center

State medical director

Volunteer/paid on call EMS agency

## EMS Experiences

### EMS Activities Offered

Disaster Medicine

Event/Mass Gathering Medicine

Fixed Wing EMS

Global EMS

Ground EMS

HEMS

Rural EMS

TEMS

Wilderness Medicine

### Fellow Driven Field Response Vehicle

No

### Online Medical Control Opportunities

Yes

### Funded and Consistently Attended Fellow Experiences

NAEMSP Medical Director Course

NAEMSP Conference

### Didactic Hour Modality

EMS specific conference time

## Clinical Practice

### **Institutions Where Fellows Work Clinically in ED**

Multiple sites required

### **Required Clinical Sites**

Academic Medical Center

Community ED

Stand Alone ED

### **Do Fellows Practice as Independent Attendings in ED?**

Yes

### **Fellow Moonlighting Status**

Optional

# UNIVERSITY OF ARIZONA EMS FELLOWSHIP

JGaither@arizona.edu

*Training EMS Fellows since 2006*

## Basic Information

### Program Director

Josh Gaither, MD

### Assistant/Associate Program Director

### Address

Department of Emergency Medicine, 1501 N. Campbell Ave., AHSL 4165E,  
PO Box 245057, Tucson, Arizona 85724

### Region

### Extra year available?

Optional

### ACGME Accredited

Yes

### Year of ACGME Accreditation

2014

### Match Participation

Yes

### Percentage of ACGME years with enrolled fellow?

90

### Program Description

## Fellow Details

### Base Salary Before Any Moonlighting

\$60,000 - \$80,000

### Average Salary Including Any Moonlighting

Greater than \$120,000

### Weekly Required ED Hours for Base Salary

Less than 10 hours

### Annual Vacation Time

3-4 weeks

### ACGME Fellow Board Exam Pass Rate

67%-99%

### ACGME Fellows Practicing as EMS Medical Directors

67% - 99%

## EMS Faculty

### Number of EMS Board Certified Core Faculty

9

### EMS Core Faculty Ranks

Professor

Associate Professor

Assistant Professor

### EMS Faculty Medical Direction Roles

Air EMS agency

Ground EMS agency with less than 100 providers

Ground EMS agency with 100-500 providers

Ground EMS agency with 500-1000 providers

Ground EMS agency with over 1000 providers

Paramedic initial certification training center

State medical director

Volunteer/paid on call EMS agency

## EMS Experiences

### EMS Activities Offered

Ground EMS

HEMS

Rural EMS

Wilderness Medicine

### Fellow Driven Field Response Vehicle

Yes

### Description of Fellow Driven Vehicle

Shared vehicle

### Online Medical Control Opportunities

Yes

### Funded and Consistently Attended Fellow Experiences

NAEMSP Medical Director Course

### Didactic Hour Modality

EMS specific conference time

**Institutions Where Fellows Work Clinically in ED**

Multiple sites required

**Required Clinical Sites**

Academic Medical Center

Community ED

Tertiary Care/Level 1 Trauma Center

**Do Fellows Practice as Independent Attendings in ED?**

Yes

**Fellow Moonlighting Status**

Optional

# HARBOR-UCLA MEDICAL CENTER

<https://emedharbor.edu/ems-disaster-medicine-fellowship/>

SSchlesinger2@dhs.lacounty.gov

*Training EMS Fellows since 2004*



**EMERGENCY MEDICAL  
SERVICES AGENCY**  
LOS ANGELES COUNTY

## Basic Information

### Program Director

Shira Schlesinger, MD, MPH, FAEMS

### Assistant/Associate Program Director

Denise Whitfield,

### Address

1000 W Carson Street, Torrance, California 90509

### Region

West

### Extra year available?

Optional

### ACGME Accredited

Yes

### Year of ACGME Accreditation

2014

### Match Participation

Yes

### Percentage of ACGME years with enrolled fellow?

92

### Program Description

The fellowship is a unique collaboration between the Los Angeles County EMS Agency, the Los Angeles County Fire Department, and the Department of Emergency Medicine at Harbor-UCLA Medical Center. Our goal is to create a fellowship experience that prepares the physician to become a talented specialist in EMS and Disaster Medicine.

## Fellow Details

### Base Salary Before Any Moonlighting

\$100,000 - \$120,000

### Average Salary Including Any Moonlighting

Greater than \$120,000

### Weekly Required ED Hours for Base Salary

10 - 20 hours

### Annual Vacation Time

3-4 weeks

### ACGME Fellow Board Exam Pass Rate

100%

### ACGME Fellows Practicing as EMS Medical Directors

67% - 99%

## EMS Faculty

### Number of EMS Board Certified Core Faculty

8

### EMS Core Faculty Ranks

Associate Professor

Assistant Professor

### EMS Faculty Medical Direction Roles

Ground EMS agency with less than 100 providers

Ground EMS agency with 100-500 providers

Ground EMS agency with over 1000 providers

Paramedic initial certification training center

## EMS Experiences

### EMS Activities Offered

Disaster Medicine

Event/Mass Gathering Medicine

Ground EMS

HEMS

Rural EMS

TEMS

USAR

Wilderness Medicine

### Fellow Driven Field Response Vehicle

No

### Online Medical Control Opportunities

Yes

### Funded and Consistently Attended Fellow Experiences

NAEMSP Medical Director Course

NAEMSP Conference

### Didactic Hour Modality

EMS specific conference time

**Institutions Where Fellows Work Clinically in ED**

Single site only

**Required Clinical Sites**

Academic Medical Center

Tertiary Care/Level 1 Trauma Center

**Do Fellows Practice as Independent Attendings in ED?**

Yes

**Fellow Moonlighting Status**

Optional



# UNIVERSITY OF CALIFORNIA, SAN DIEGO

## MEDICAL CENTER

<https://emergencymed.ucsd.edu/education/fellowships/ems-and-disaster-medicine/index.html>

[mmalong@health.ucsd.edu](mailto:mmalong@health.ucsd.edu)

*Training EMS Fellows since*

### Basic Information

**Program Director**  
Erin Noste, MD

**Assistant/Associate Program Director**  
Jennifer Farah, MD

**Address**  
200 W. Arbor Dr., San Diego, California 92103

**Region**  
West

**Extra year available?**  
Optional

**ACGME Accredited**  
Yes

**Year of ACGME Accreditation**  
2014

**Match Participation**  
Yes

**Percentage of ACGME years with enrolled fellow?**  
100

#### Program Description

The UCSD EMS and Disaster Medicine Fellowship is designed to provide emergency medicine physicians the opportunity to be educated and trained in the administrative, medical oversight and field aspects of EMS systems. Highlights of the program include partnering with agencies including the City of San Diego Fire Rescue Department, San Diego County Office of EMS, Imperial County's EMS Agency, Mercy Air, and Falck. Additionally, fellows are exposed to global EMS and disaster preparedness/response.

### Fellow Details

**Base Salary Before Any Moonlighting**  
\$80,000 - \$100,000

**Average Salary Including Any Moonlighting**  
\$100,000 - \$120,000

**Weekly Required ED Hours for Base Salary**  
10 - 20 hours

**Annual Vacation Time**  
3-4 weeks

**ACGME Fellow Board Exam Pass Rate**  
100%

**ACGME Fellows Practicing as EMS Medical Directors**  
67% - 99%

## EMS Faculty

### Number of EMS Board Certified Core Faculty

5

### EMS Core Faculty Ranks

Professor

Associate Professor

Assistant Professor

### EMS Faculty Medical Direction Roles

Air EMS agency

Federal agency medical director

Ground EMS agency with less than 100 providers

Ground EMS agency with 100-500 providers

Ground EMS agency with 500-1000 providers

Ground EMS agency with over 1000 providers

Paramedic initial certification training center

Volunteer/paid on call EMS agency

## EMS Experiences

### EMS Activities Offered

Disaster Medicine

Event/Mass Gathering Medicine

Fixed Wing EMS

Global EMS

Ground EMS

HEMS

Rural EMS

TEMS

USAR

Wilderness Medicine

### Fellow Driven Field Response Vehicle

No

### Online Medical Control Opportunities

Yes

### Funded and Consistently Attended Fellow Experiences

NAEMSP Medical Director Course

NAEMSP Conference

### Didactic Hour Modality

EMS specific conference time

**Institutions Where Fellows Work Clinically in ED**

Multiple sites required

**Required Clinical Sites**

Academic Medical Center

Rural ED

Tertiary Care/Level 1 Trauma Center

Urgent Care

**Do Fellows Practice as Independent Attendings in ED?**

Yes

**Fellow Moonlighting Status**

Optional

## PARTING WORDS

Thank you for your interest in UCSD's EMS and Disaster Medicine Fellowship! The UCSD EMS and Disaster Medicine fellowship is able to provide the EMS core curriculum while supporting the EMS fellow's career goals. We have a wide range of EMS/disaster medicine opportunities from HEMS, rural EMS, EMS research, EMS education, border health, wilderness EMS, global EMS, international disaster response and more!



# UNIVERSITY OF CENTRAL FLORIDA/HCA

## FLORIDA HEALTHCARE EMS FELLOWSHIP

<https://ucfemergencymedicineresidency.com/ems-fellowship/>

ucfems@gmail.com

*Training EMS Fellows since 2023*

### Basic Information

**Program Director**  
Ayanna Walker, MD

**Assistant/Associate Program Director**

**Address**  
700 W. Oak St., Kissimmee, Florida 34741

**Region**  
South

**Extra year available?**  
No

**ACGME Accredited**  
Yes

**Year of ACGME Accreditation**

**Match Participation**  
Yes

**Percentage of ACGME years with enrolled fellow?**  
100

#### Program Description

The goal of the EMS Fellowship is to prepare highly qualified academic emergency physicians for leadership and medical oversight of pre-hospital systems. Fellows of our program will graduate with advanced competencies in medical education, system oversight and design, and pre-hospital clinical care. We also offer an optional Medical Education or Simulation track.

### Fellow Details

**Base Salary Before Any Moonlighting**  
\$60,000 - \$80,000

**Average Salary Including Any Moonlighting**  
\$100,000 - \$120,000

**Weekly Required ED Hours for Base Salary**  
Less than 10 hours

**Annual Vacation Time**  
3-4 weeks

**ACGME Fellow Board Exam Pass Rate**

**ACGME Fellows Practicing as EMS Medical Directors**

## EMS Faculty

### Number of EMS Board Certified Core Faculty

4

### EMS Core Faculty Ranks

Associate Professor

Assistant Professor

### EMS Faculty Medical Direction Roles

Ground EMS agency with less than 100 providers

Ground EMS agency with 100-500 providers

Paramedic initial certification training center

## EMS Experiences

### EMS Activities Offered

Disaster Medicine

Event/Mass Gathering Medicine

Ground EMS

HEMS

Rural EMS

TEMS

### Fellow Driven Field Response Vehicle

No

### Online Medical Control Opportunities

Yes

### Funded and Consistently Attended Fellow Experiences

NAEMSP Medical Director Course

NAEMSP Conference

### Didactic Hour Modality

EMS specific conference time

### Institutions Where Fellows Work Clinically in ED

Multiple sites required

### Required Clinical Sites

Academic Medical Center

Stand Alone ED

### Do Fellows Practice as Independent Attendings in ED?

Yes

### Fellow Moonlighting Status

Optional



UNIVERSITY OF CENTRAL FLORIDA HCA Florida Osceola Hospital

UCF EMS Fellowship

w/ the option of a medical education concentration

Are you a physician who wants to:

- have access to state of the art simulation for training paramedics, students, and residents?
- roam the streets of Osceola County treating cardiac arrest, trauma, & other high acuity patients?
- be mentored by expert faculty to conduct research & focus on performance improvement in the prehospital setting?
- fly with a premier helicopter and fixed wing service managing critical patients?
- provide event medicine coverage in the largest tourist destination of the world?
- develop evidenced based protocols advancing prehospital care?
- be an Associate Medical Director for a high performing paramedic training program?
- collaborate with nearby EMS medical directors & fellows for a robust & interactive didactic experience?
- learn special operations by participating in training scenarios with USAR, technical rescue, & tactical teams?
- network within the largest healthcare system in the Nation?
- be clinical faculty in Orlando's only University based EM Residency?
- receive a competitive salary with UCF insurance & benefits?

# UNIVERSITY OF CHICAGO EMS FELLOWSHIP

<https://em.uchicago.edu/fellowships/ems/>

[ktataris@uchicagomedicine.org](mailto:ktataris@uchicagomedicine.org)

*Training EMS Fellows since 2017*



AT THE FOREFRONT

**UChicago  
Medicine**

Emergency  
Medical  
Services

## Basic Information

**Program Director**  
Katie Tataris, MD

**Assistant/Associate Program Director**  
Ameera Haamid, MD

**Address**  
5841 S. Maryland Avenue, Chicago, Illinois 60637

**Region**  
Midwest

**Extra year available?**  
No

**ACGME Accredited**  
Yes

**Year of ACGME  
Accreditation**  
2017

**Match Participation**  
Yes

**Percentage of ACGME  
years with enrolled  
fellow?**

### Program Description

The University of Chicago Medicine has hosted a 12-month ACGME accredited EMS Fellowship since 2017. Emergency Medical Services is a clinical specialty that includes the care of patients in all environments outside of traditional medical care facilities, including clinics, offices, and hospitals. It includes evaluation and treatment of acute injury and illness in all age groups, planning and prevention, monitoring, and team oversight.

## Fellow Details

**Base Salary Before Any Moonlighting**  
\$80,000 - \$100,000

**Average Salary Including Any Moonlighting**  
\$80,000 - \$100,000

**Weekly Required ED Hours for Base Salary**  
10 - 20 hours

**Annual Vacation Time**  
3-4 weeks

**ACGME Fellow Board Exam Pass Rate**  
100%

**ACGME Fellows Practicing as EMS Medical  
Directors**  
100%

## EMS Faculty

### Number of EMS Board Certified Core Faculty

4

### EMS Core Faculty Ranks

Professor

Associate Professor

Assistant Professor

### EMS Faculty Medical Direction Roles

Air EMS agency

Ground EMS agency with less than 100 providers

Ground EMS agency with 100-500 providers

Ground EMS agency with 500-1000 providers

Ground EMS agency with over 1000 providers

Volunteer/paid on call EMS agency

## EMS Experiences

### EMS Activities Offered

Disaster Medicine

Event/Mass Gathering Medicine

Fixed Wing EMS

Global EMS

Ground EMS

HEMS

TEMS

USAR

### Fellow Driven Field Response Vehicle

Yes

### Description of Fellow Driven Vehicle

Call schedule, take home vehicle for fellow

### Online Medical Control Opportunities

Yes

### Funded and Consistently Attended Fellow Experiences

NAEMSP Medical Director Course

NAEMSP Conference

TEEX Courses

NAEMSP Fellows QI Course, NREMT Fellows Course,

### Didactic Hour Modality

EMS specific conference time

**Institutions Where Fellows Work Clinically in ED**

Single site only

**Required Clinical Sites**

Academic Medical Center

**Do Fellows Practice as Independent Attendings in ED?**

Yes

**Fellow Moonlighting Status**

Optional

# UNIVERSITY OF CINCINNATI

<https://med.uc.edu/depart/emergency-medicine/divisions/emergency-medical-services/fellowship>

woods.curry@uc.edu

*Training EMS Fellows since 1996*

## Basic Information

**Program Director**  
Woods Curry, MD

**Assistant/Associate Program Director**  
Doug Klein, MD

**Address**  
231 Albert Sabin Way, MSB 1654, PO Box 670769, Cincinnati, Ohio 45267

**Region**  
Midwest

**Extra year available?**  
Optional

ACGME Accredited	Year of ACGME Accreditation	Match Participation	Percentage of ACGME years with enrolled fellow?
Yes	2014	Yes	90

### Program Description

University Of Cincinnati's Department Of Emergency Medicine's Division of EMS has hosted a Fellowship in Emergency Medical Services Medicine since 1996. In 2013, the Fellowship was one of the initial programs in the country to receive full accreditation by the ACGME in the first year it was offered. The fellowship supports three Fellows yearly, with applications accepted on a rolling basis, but interviews are generally held in the Fall.

## Fellow Details

**Base Salary Before Any Moonlighting**  
Greater than \$120,000

**Average Salary Including Any Moonlighting**  
Greater than \$120,000

**Weekly Required ED Hours for Base Salary**  
10 - 20 hours

**Annual Vacation Time**  
3-4 weeks

**ACGME Fellow Board Exam Pass Rate**  
67%-99%

**ACGME Fellows Practicing as EMS Medical Directors**  
67% - 99%

## EMS Faculty

### Number of EMS Board Certified Core Faculty

#### EMS Core Faculty Ranks

Professor  
Associate Professor  
Assistant Professor

#### EMS Faculty Medical Direction Roles

Air EMS agency  
Ground EMS agency with less than 100 providers  
Ground EMS agency with 100-500 providers  
Paramedic initial certification training center

## EMS Experiences

### EMS Activities Offered

Disaster Medicine  
Event/Mass Gathering Medicine  
Ground EMS  
HEMS  
Rural EMS  
TEMS  
USAR  
Wilderness Medicine

### Fellow Driven Field Response Vehicle

No

### Online Medical Control Opportunities

No

### Funded and Consistently Attended Fellow Experiences

NAEMSP Medical Director Course  
NAEMSP Conference

### Didactic Hour Modality

EMS specific conference time

## Clinical Practice

### **Institutions Where Fellows Work Clinically in ED**

Single site only

### **Required Clinical Sites**

Community ED

### **Do Fellows Practice as Independent Attendings in ED?**

Yes

### **Fellow Moonlighting Status**

Required

# UNIVERSITY OF FLORIDA EMS FELLOWSHIP

<https://emergency.med.ufl.edu/education/fellowship-programs/ems-fellowship/>

[jasonjones@ufl.edu](mailto:jasonjones@ufl.edu)



**Division of EMS**

*Department of Emergency Medicine*

**UNIVERSITY of FLORIDA**

*Training EMS Fellows since 2013*

## Basic Information

**Program Director**  
Jason Jones, MD

**Assistant/Associate Program Director**  
Torben Becker, MD, PhD

**Address**  
1600 SW Archer Road, Gainesville, Florida 32610

**Region**  
South

**Extra year available?**  
Optional

**ACGME Accredited**  
Yes

**Year of ACGME Accreditation**  
2014

**Match Participation**  
Yes

**Percentage of ACGME years with enrolled fellow?**  
100

### **Program Description**

Established in 2013, our program was one of the first ACGME-accredited fellowships at the University of Florida. At one of the largest quaternary care centers in the state, our fellows enjoy working in a system that takes care of patients in over 13 surrounding counties. Our EMS physicians provide medical direction to 5 major regional transport agencies, helicopter EMS, collegiate EMS, event medicine, 2 paramedic schools, and more than a dozen non-transport EMS agencies.

## Fellow Details

**Base Salary Before Any Moonlighting**  
\$80,000 - \$100,000

**Average Salary Including Any Moonlighting**  
Greater than \$120,000

**Weekly Required ED Hours for Base Salary**  
10 - 20 hours

**Annual Vacation Time**  
3-4 weeks

**ACGME Fellow Board Exam Pass Rate**  
67%-99%

**ACGME Fellows Practicing as EMS Medical Directors**  
34% - 66%

## EMS Faculty

### Number of EMS Board Certified Core Faculty

10

### EMS Core Faculty Ranks

Associate Professor

Assistant Professor

### EMS Faculty Medical Direction Roles

Air EMS agency

Ground EMS agency with 100-500 providers

Paramedic initial certification training center

Volunteer/paid on call EMS agency

## EMS Experiences

### EMS Activities Offered

Event/Mass Gathering Medicine

Fixed Wing EMS

Global EMS

Ground EMS

HEMS

Rural EMS

TEMS

### Fellow Driven Field Response Vehicle

Yes

### Description of Fellow Driven Vehicle

Full time, take home vehicle for fellow

### Online Medical Control Opportunities

Yes

### Funded and Consistently Attended Fellow Experiences

NAEMSP Medical Director Course

NAEMSP Conference

Board Preparation Course

### Didactic Hour Modality

EMS specific conference time

**Institutions Where Fellows Work Clinically in ED**

Multiple sites required

**Required Clinical Sites**

Academic Medical Center

Stand Alone ED

Tertiary Care/Level 1 Trauma Center

**Do Fellows Practice as Independent Attendings in ED?**

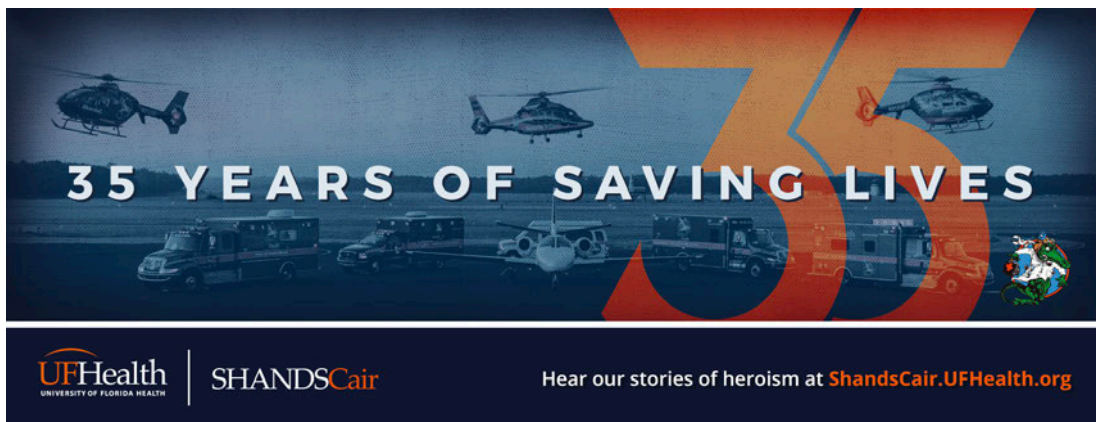
Yes

**Fellow Moonlighting Status**

Optional

## PARTING WORDS

Come join us in sunny Florida! Our ACGME-accredited program has graduated 2 EMS Fellows every year since our inaugural 2014 class. Whether you enjoy fire-based, helicopter, fixed wing, critical care, rural, collegiate, academic, event medicine, or tactical EMS, the University of Florida is the perfect choice for your EMS fellowship experience.



# UNIVERSITY OF IOWA HOSPITALS AND CLINICS

<https://gme.medicine.uiowa.edu/emergency-medical-services-fellowship>  
[ems-fellowship@uiowa.edu](mailto:ems-fellowship@uiowa.edu)



*Training EMS Fellows since 2018*

## Basic Information

**Program Director**  
*MS Fellows since 2018*

Peter Georgakakos, DO, FAEMS

**Assistant/Associate Program Director**

Melvin Donaldson, MD, PhD

**Address**

200 Hawkins Drive, SE-212 GH, Iowa City, Iowa 52242

**Region**

Midwest

**Extra year available?**

No

**ACGME Accredited**

Yes

**Year of ACGME Accreditation**

2017

**Match Participation**

Yes

**Percentage of ACGME years with enrolled fellow?**

88

**Program Description**

The University of Iowa Health Care's EMS Fellowship is an ACGME-accredited program that trains one fellow per year in a multi-disciplinary format. The trainee will have dedicated clinical field time to include EMS physician response, air and ground ambulance medical transport, fire department response, SWAT medical support, event medicine, didactic education, reading program, research education/dedicated research time, and quality improvement activities.

## Fellow Details

**Base Salary Before Any Moonlighting**

\$60,000 - \$80,000

**Average Salary Including Any Moonlighting**

\$100,000 - \$120,000

**Weekly Required ED Hours for Base Salary**

Less than 10 hours

**Annual Vacation Time**

3-4 weeks

**ACGME Fellow Board Exam Pass Rate**

67%-99%

**ACGME Fellows Practicing as EMS Medical Directors**

100%

## EMS Faculty

### Number of EMS Board Certified Core Faculty

1

### EMS Core Faculty Ranks

Associate Professor

Assistant Professor

### EMS Faculty Medical Direction Roles

Air EMS agency

Ground EMS agency with less than 100 providers

Ground EMS agency with 100-500 providers

Paramedic initial certification training center

State medical director

Volunteer/paid on call EMS agency

## EMS Experiences

### EMS Activities Offered

Disaster Medicine

Event/Mass Gathering Medicine

Ground EMS

HEMS

Rural EMS

TEMS

### Fellow Driven Field Response Vehicle

Yes

### Description of Fellow Driven Vehicle

Call schedule, take home vehicle for fellow

### Online Medical Control Opportunities

Yes

### Funded and Consistently Attended Fellow Experiences

NAEMSP Medical Director Course

NAEMSP Conference

EVOC, EMD

### Didactic Hour Modality

EMS specific conference time

### Institutions Where Fellows Work Clinically in ED

Single site, but multiple sites optional

### Required Clinical Sites

### Optional Clinical Sites

Academic Medical Center

Community ED

Rural ED

### Do Fellows Practice as Independent Attendings in ED?

Yes

### Fellow Moonlighting Status

Optional

## PARTING WORDS

Our mission is to innovate the practice of prehospital medicine by providing cutting edge clinical care, educating the next generation of EMS physicians, and discovering new ways to advance our science.

Our vision is to produce EMS physician leaders who will make a positive difference in the lives of the sick and injured.



# University of Kansas

<https://www.kumc.edu/school-of-medicine/academics/departments/emergency-medicine/academics/fellowships/ems-fellowship.html>

[awhite@kumc.edu](mailto:awhite@kumc.edu)

*Training EMS Fellows since 2022*

## Basic Information

**Program Director**  
Bryan Beaver, MD

**Assistant/Associate Program Director**  
Allyson Briggs, MD

**Address**  
3901 Rainbow Blvd, Kansas City, Kansas 66160

**Region**  
Midwest

**Extra year available?**  
No

**ACGME Accredited**  
Yes

**Year of ACGME Accreditation**

**Match Participation**  
Yes

**Percentage of ACGME years with enrolled fellow?**  
100

### Program Description

The ACGME Accredited EMS and Disaster Medicine fellowship is designed for the Emergency Medicine trained physicians interested in a successful career in EMS and Disaster medicine through extensive instruction in the field of out-of-hospital medicine including EMS systems and design, practice of evidence-based prehospital medicine, EMS research, event/mass-gathering medicine, disaster planning and response, critical care and interfacility transport, and special operations in EMS.

## Fellow Details

**Base Salary Before Any Moonlighting**  
Greater than \$120,000

**Average Salary Including Any Moonlighting**  
Greater than \$120,000

**Weekly Required ED Hours for Base Salary**  
10 - 20 hours

**Annual Vacation Time**  
3-4 weeks

**ACGME Fellow Board Exam Pass Rate**  
100%

**ACGME Fellows Practicing as EMS Medical Directors**  
100%

## EMS Faculty

### Number of EMS Board Certified Core Faculty

4

### EMS Core Faculty Ranks

Professor

Associate Professor

Assistant Professor

### EMS Faculty Medical Direction Roles

Ground EMS agency with less than 100 providers

Ground EMS agency with 100-500 providers

Ground EMS agency with over 1000 providers

Paramedic initial certification training center

## EMS Experiences

### EMS Activities Offered

Disaster Medicine

Event/Mass Gathering Medicine

Ground EMS

HEMS

Rural EMS

TEMS

USAR

### Fellow Driven Field Response Vehicle

Yes

### Description of Fellow Driven Vehicle

Full time, take home vehicle for fellow

### Online Medical Control Opportunities

Yes

### Funded and Consistently Attended Fellow Experiences

NAEMSP Medical Director Course

NAEMSP Conference

TEEX Courses

USAR Medical Specialist, NAEMSP Fellow Quality Course

### Didactic Hour Modality

EMS specific conference time

**Institutions Where Fellows Work Clinically in ED**

Single site only

**Required Clinical Sites**

Academic Medical Center

**Do Fellows Practice as Independent Attendings in ED?**

Yes

**Fellow Moonlighting Status**

Optional

# UNIVERSITY OF LOUISVILLE

<https://louisville.edu/medicine/departments/emergencymedicine/fellowships/ems-fellowship>

timothy.price@louisville.edu

*Training EMS Fellows since 2018*

## Basic Information

**Program Director**  
Timothy Price, MD

**Assistant/Associate Program Director**  
Aaron Kuzel, DO

**Address**  
530 S Jackson Street, Louisville, Kentucky 40202-1675

**Region**  
South

**Extra year available?**  
No

**ACGME Accredited**  
Yes

**Year of ACGME Accreditation**  
2015

**Match Participation**  
Yes

**Percentage of ACGME years with enrolled fellow?**  
50

### Program Description

Robust fellowship with exposure to wide range of EMS experiences, HAZMAT technician course, tactical EMS. ED experience in the only adult Level 1 Trauma Center in the area. Rotation with a pediatric intensive care transport team (ground and air, rotor and fixed wing). All in a department of emergency medicine that is a family atmosphere. Take home response car for the year.

## Fellow Details

**Base Salary Before Any Moonlighting**  
\$60,000 - \$80,000

**Average Salary Including Any Moonlighting**

**Weekly Required ED Hours for Base Salary**  
Less than 10 hours

**Annual Vacation Time**  
3-4 weeks

**ACGME Fellow Board Exam Pass Rate**  
100%

**ACGME Fellows Practicing as EMS Medical Directors**  
67% - 99%

## EMS Faculty

### Number of EMS Board Certified Core Faculty

5

### EMS Core Faculty Ranks

Associate Professor

Assistant Professor

### EMS Faculty Medical Direction Roles

Air EMS agency

Ground EMS agency with less than 100 providers

Paramedic initial certification training center

## EMS Experiences

### EMS Activities Offered

Event/Mass Gathering Medicine

Ground EMS

HEMS

Rural EMS

TEMS

### Fellow Driven Field Response Vehicle

Yes

### Description of Fellow Driven Vehicle

Full time, take home vehicle for fellow

### Online Medical Control Opportunities

Yes

### Funded and Consistently Attended Fellow Experiences

NAEMSP Medical Director Course

NAEMSP Conference

Options

### Didactic Hour Modality

Impromptu lectures and formal conferences

**Institutions Where Fellows Work Clinically in ED**

Single site only

**Required Clinical Sites**

Academic Medical Center

Tertiary Care/Level 1 Trauma Center

**Do Fellows Practice as Independent Attendings in ED?**

Yes

**Fellow Moonlighting Status**

Optional

# UNIVERSITY OF MASSACHUSETTS MEDICAL SCHOOL EMS

<https://www.umassmed.edu/emed/education/fellowship/emsfell/>

Timothy.Boardman@umassmemorial.org



*Training EMS Fellows since*

## Basic Information

### Program Director

Timothy Boardman, MD, MBA

### Assistant/Associate Program Director

Stacy Weisberg, MD, MPH

### Address

55 Lake Avenue North, Department of Emergency Medicine, Worcester,  
Massachusetts 01655

### Region

Northeast

### Extra year available?

No

### ACGME Accredited

### Program Description

UMass Chan offers a well-rounded EMS fellowship where fellows have the opportunity to work with a busy, urban, hospital based 911 EMS system, a two-helicopter critical care transfer service, as well as many municipal and private EMS agencies. Fellows will have primary use of a physician response vehicle equipped at the ALS level along with RSI medications and blood products for field transfusion. Additionally, fellows will have exposure to the administrative and educational side of EMS.

## Fellow Details

### Base Salary Before Any Moonlighting

\$80,000 - \$100,000

### Average Salary Including Any Moonlighting

\$100,000 - \$120,000

### Weekly Required ED Hours for Base Salary

10 - 20 hours

### Annual Vacation Time

3-4 weeks

### ACGME Fellow Board Exam Pass Rate

67%-99%

### ACGME Fellows Practicing as EMS Medical Directors

67% - 99%

## EMS Faculty

### Number of EMS Board Certified Core Faculty

5

### EMS Core Faculty Ranks

Professor

Associate Professor

Assistant Professor

### EMS Faculty Medical Direction Roles

Air EMS agency

Ground EMS agency with less than 100 providers

Ground EMS agency with 100-500 providers

Paramedic initial certification training center

Volunteer/paid on call EMS agency

## EMS Experiences

### EMS Activities Offered

Disaster Medicine

Event/Mass Gathering Medicine

Ground EMS

HEMS

Rural EMS

TEMS

### Fellow Driven Field Response Vehicle

Yes

### Description of Fellow Driven Vehicle

Shared vehicle

### Online Medical Control Opportunities

Yes

### Funded and Consistently Attended Fellow Experiences

NAEMSP Medical Director Course

NAEMSP Conference

### Didactic Hour Modality

EMS specific conference time

## Clinical Practice

### **Institutions Where Fellows Work Clinically in ED**

Multiple sites required

### **Required Clinical Sites**

Academic Medical Center

Community ED

Tertiary Care/Level 1 Trauma Center

### **Do Fellows Practice as Independent Attendings in ED?**

Yes

### **Fellow Moonlighting Status**

Required

## **PARTING WORDS**

UMass provides a well-balanced EMS fellowship that consistently prepares fellows to function independently as an EMS medical director no matter what career path is chosen.

# UNIVERSITY OF MICHIGAN EMS FELLOWSHIP

<https://medicine.umich.edu/dept/emergency-medicine/education/fellowships/emergency-medical-services-ems-fellowship>

[berrye@med.umich.edu](mailto:berrye@med.umich.edu)



*Training EMS Fellows since 2020*

## Basic Information

<b>Program Director</b> Christine Brent, MD, FACEP, FAEMS		<b>Assistant/Associate Program Director</b> Mark Lowell, MD	
<b>Address</b> 1500 E. Medical Center Drive, Department of Emergency Medicine, Ann Arbor, Michigan 48109-5305		<b>Region</b> Midwest	
<b>Extra year available?</b> Optional			
<b>ACGME Accredited</b> Yes	<b>Year of ACGME Accreditation</b> 2019	<b>Match Participation</b> Yes	<b>Percentage of ACGME years with enrolled fellow?</b> 100

### Program Description

The Emergency Medical Services (EMS) Fellowship at the University of Michigan aims to provide fellows with the skills and knowledge to become leaders in the field of pre-hospital care. We believe that this involves exposure and involvement in a multitude of experiences tailored to the fellow's professional and educational goals. There are opportunities within the realms of ground EMS, air medical EMS, research, EMS system administration, event medicine, disaster medicine and special operations.

## Fellow Details

<b>Base Salary Before Any Moonlighting</b> \$80,000 - \$100,000	<b>Average Salary Including Any Moonlighting</b> Greater than \$120,000
<b>Weekly Required ED Hours for Base Salary</b> Less than 10 hours	<b>Annual Vacation Time</b> 3-4 weeks
<b>ACGME Fellow Board Exam Pass Rate</b> 67%-99%	<b>ACGME Fellows Practicing as EMS Medical Directors</b> 67% - 99%

## EMS Faculty

### Number of EMS Board Certified Core Faculty

5

### EMS Core Faculty Ranks

Associate Professor

Assistant Professor

### EMS Faculty Medical Direction Roles

Air EMS agency

Ground EMS agency with less than 100 providers

Ground EMS agency with 100-500 providers

Ground EMS agency with 500-1000 providers

Volunteer/paid on call EMS agency

## EMS Experiences

### EMS Activities Offered

Disaster Medicine

Fixed Wing EMS

Ground EMS

HEMS

Rural EMS

TEMS

Wilderness Medicine

### Fellow Driven Field Response Vehicle

Yes

### Description of Fellow Driven Vehicle

Shared vehicle

### Online Medical Control Opportunities

Yes

### Funded and Consistently Attended Fellow Experiences

NAEMSP Medical Director Course

NAEMSP Conference

one other conference of the fellows choosing

### Didactic Hour Modality

EMS specific conference time

### **Institutions Where Fellows Work Clinically in ED**

Single site, but multiple sites optional

### **Required Clinical Sites**

Community ED

### **Optional Clinical Sites**

Stand Alone ED

### **Do Fellows Practice as Independent Attendings in ED?**

Yes

### **Fellow Moonlighting Status**

Optional

## **PARTING WORDS**

<https://www.youtube.com/watch?v=wbLyh-82GUk&feature=youtu.be>

Go Blue!



<https://www.umc.edu/som/Departments%20and%20Offices/SOM%20Departments/Emergency-Medicine/Residents-and-Fellows/Fellowships.html>  
zhusband@umc.edu



## Basic Information

Our University has the state's only Level One Trauma Center, only Pediatric Hospital, and largest Neonatal ICU. We serve a 600,000-person metro with helicopter EMS, Peds and Neonatal Critical Care, transporting more than 3,000 patients last year. We partner with a large third-party EMS system for urban ground response. We are a primary agency for the state's disaster planning and response. Fire and Tactical trainings through the State Fire Academy. Research and grant-writing strongly supported.

## Fellow Details

**ACGME Fellows Practicing as EMS Medical Directors**  
34% - 66%

## EMS Faculty

### Number of EMS Board Certified Core Faculty

3

### EMS Core Faculty Ranks

Professor

Associate Professor

### EMS Faculty Medical Direction Roles

Air EMS agency

Ground EMS agency with less than 100 providers

Ground EMS agency with 100-500 providers

Ground EMS agency with over 1000 providers

State medical director

## EMS Experiences

### EMS Activities Offered

Disaster Medicine

Ground EMS

HEMS

Rural EMS

TEMS

Wilderness Medicine

### Fellow Driven Field Response Vehicle

Yes

### Description of Fellow Driven Vehicle

Shared vehicle

### Online Medical Control Opportunities

Yes

### Funded and Consistently Attended Fellow Experiences

NAEMSP Medical Director Course

NAEMSP Conference

### Didactic Hour Modality

EMS specific conference time

**Institutions Where Fellows Work Clinically in ED**

Single site only

**Required Clinical Sites**

Academic Medical Center

Tertiary Care/Level 1 Trauma Center

**Do Fellows Practice as Independent Attendings in ED?**

Yes

**Fellow Moonlighting Status**

Optional

## PARTING WORDS

Located in the state's largest metro, but serving a very rural state, our fellows care for a diverse group of patients with severe disease processes in challenging settings. Four separate HEMS bases cover the state and offer plenty of flight time. Our new EMS Physician vehicle will be ready for use by the 2023 fellows. The University offers a two year Master of Science in Clinical Investigation and we would consider supporting qualified candidates who wish to pursue this simultaneously.



# UNIVERSITY OF NEW MEXICO

<https://hsc.unm.edu/medicine/departments/emergency-medicine/education/fellowships/ems/>

[mfbustillos@salud.unm.edu](mailto:mfbustillos@salud.unm.edu)

*Training EMS Fellows since 2010*

## Basic Information

**Program Director**  
Whitney Barrett, MD

**Assistant/Associate Program Director**  
Mateo Garcia, MD

**Address**  
MSC11 6025, 1 University of New Mexico, Albuquerque, New Mexico  
87131

**Region**  
West

**Extra year available?**  
No

**ACGME Accredited**  
Yes

**Year of ACGME Accreditation**  
2014

**Match Participation**  
Yes

**Percentage of ACGME years with enrolled fellow?**  
100

### Program Description

Our ACGME-accredited EMS Fellowship includes: ▶ Strong training for future EMS Physician leaders, from current EMS Physician leaders ▶ Broad introduction to all aspects of EMS Medical Direction, Research, Policy, and Clinical Medicine ▶ Active participation in the UNM EMS Consortium Physician Field Response Program ▶ Mentorship from 9 EMS Board Certified Faculty as well as EMS providers from our many partner EMS agencies, Hands-on training in multiple aspects of prehospital medicine

## Fellow Details

**Base Salary Before Any Moonlighting**  
\$60,000 - \$80,000

**Average Salary Including Any Moonlighting**

**Weekly Required ED Hours for Base Salary**  
Less than 10 hours

**Annual Vacation Time**  
3-4 weeks

**ACGME Fellow Board Exam Pass Rate**  
67%-99%

**ACGME Fellows Practicing as EMS Medical Directors**  
67% - 99%

## EMS Faculty

### Number of EMS Board Certified Core Faculty

9

### EMS Core Faculty Ranks

Professor

Associate Professor

Assistant Professor

### EMS Faculty Medical Direction Roles

Air EMS agency

Federal agency medical director

Ground EMS agency with less than 100 providers

Ground EMS agency with 100-500 providers

Ground EMS agency with 500-1000 providers

Paramedic initial certification training center

State medical director

Volunteer/paid on call EMS agency

## EMS Experiences

### EMS Activities Offered

Event/Mass Gathering Medicine

Fixed Wing EMS

Ground EMS

HEMS

Rural EMS

TEMS

Wilderness Medicine

### Fellow Driven Field Response Vehicle

Yes

### Description of Fellow Driven Vehicle

Full time, take home vehicle for fellow

### Online Medical Control Opportunities

Yes

### Funded and Consistently Attended Fellow Experiences

NAEMSP Medical Director Course

NAEMSP Conference

NAEMSP QA/QI fellow course

### Didactic Hour Modality

EMS specific conference time

## Clinical Practice

### **Institutions Where Fellows Work Clinically in ED**

Single site, but multiple sites optional

### **Required Clinical Sites**

Community ED

### **Optional Clinical Sites**

Community ED

### **Do Fellows Practice as Independent Attendings in ED?**

Yes

### **Fellow Moonlighting Status**

Optional

## **PARTING WORDS**

The UNM EMS fellowship offers the fellow exposure to the breadth of EMS exposure and opportunities. It is ideal for the motivated fellow who is excited to be clinically capable in the field as well as looking to jump in and partner with a variety of faculty to learn the nuance, challenge and fun of EMS in a variety of settings.

# UNIVERSITY OF NORTH CAROLINA

<https://www.med.unc.edu/emergmed/education/fellowships/ems/>

[joseph\\_grover@med.unc.edu](mailto:joseph_grover@med.unc.edu)

*Training EMS Fellows since 2000*

## Basic Information

### Program Director

Joseph Grover, MD, FAEMS

### Assistant/Associate Program Director

Jefferson Williams, MD, MPH

### Address

170 Manning Drive, CB #7594, Chapel Hill, North Carolina 27599

### Region

South

### Extra year available?

No

### ACGME Accredited

Yes

### Year of ACGME

Accreditation

2014

### Match Participation

Yes

### Percentage of ACGME

years with enrolled fellow?

100

### Program Description

The UNC EMS Fellowship will provide a solid education in all aspects of both ground and aeromedical systems. The fellow will join the UNC faculty in medical direction for two very different EMS systems; Orange County (urban/rural mix) which includes Chapel Hill, and Wake County (urban/suburban) which includes Raleigh. The fellows will also be involved in critical care transport through medical direction of Carolina AirCare, a busy ground and aeromedical transport service.

## Fellow Details

### Base Salary Before Any Moonlighting

\$60,000 - \$80,000

### Average Salary Including Any Moonlighting

Greater than \$120,000

### Weekly Required ED Hours for Base Salary

Less than 10 hours

### Annual Vacation Time

3-4 weeks

### ACGME Fellow Board Exam Pass Rate

100%

### ACGME Fellows Practicing as EMS Medical Directors

100%

## EMS Faculty

**Number of EMS Board Certified Core Faculty**  
8

**EMS Core Faculty Ranks**

Professor  
Associate Professor  
Assistant Professor

**EMS Faculty Medical Direction Roles**

Air EMS agency  
Ground EMS agency with less than 100 providers  
Ground EMS agency with 100-500 providers  
Ground EMS agency with 500-1000 providers  
Ground EMS agency with over 1000 providers  
Paramedic initial certification training center  
Volunteer/paid on call EMS agency

## EMS Experiences

**EMS Activities Offered**

Disaster Medicine  
Event/Mass Gathering Medicine  
Fixed Wing EMS  
Ground EMS  
HEMS  
Rural EMS  
TEMS  
USAR

**Fellow Driven Field Response Vehicle**

Yes

**Description of Fellow Driven Vehicle**

Shared vehicle

**Online Medical Control Opportunities**

Yes

**Funded and Consistently Attended Fellow Experiences**

NAEMSP Medical Director Course  
NAEMSP Conference  
CONTOMS  
USAR course, Contoms medical director course

**Didactic Hour Modality**

EMS specific conference time

**Institutions Where Fellows Work Clinically in ED**

Single site, but multiple sites optional

**Required Clinical Sites**

**Optional Clinical Sites**

Academic Medical Center

Community ED

**Do Fellows Practice as Independent Attendings in ED?**

Yes

**Fellow Moonlighting Status**

Optional

# Penn State

<https://www.pennmedicine.org/departments-and-centers/emergency-medicine/education-and-training/fellowship-program/emergency-medical-services-fellowship>

PennEMSFac@uphs.upenn.edu

*Training EMS Fellows since 2024*



## Basic Information

### Program Director

Edward Dickinson, MD

### Assistant/Associate Program Director

Daniel Du Pont, MD

### Address

3400 Spruce Street, Ground Floor Ravdin, Philadelphia, Pennsylvania 19104

### Region

Northeast

### Extra year available?

No

### ACGME Accredited

Yes

### Year of ACGME Accreditation

### Match Participation

Yes

### Percentage of ACGME years with enrolled fellow?

100

### Program Description

Our goal is to train the next generation of EMS physician leaders by providing a diverse educational experience. With the support of the University of Pennsylvania Health System, our program extends from Philadelphia to the farmlands of Lancaster in a wide variety of EMS systems including fire, collegiate, volunteer, hybrid, third service, mobile integrated health, and aviation. At the completion of our fellowship, our graduates will be well prepared to practice EMS in virtually any setting.

## Fellow Details

### Base Salary Before Any Moonlighting

\$80,000 - \$100,000

### Average Salary Including Any Moonlighting

\$100,000 - \$120,000

### Weekly Required ED Hours for Base Salary

Less than 10 hours

### Annual Vacation Time

3-4 weeks

### ACGME Fellow Board Exam Pass Rate

### ACGME Fellows Practicing as EMS Medical Directors

## EMS Faculty

### Number of EMS Board Certified Core Faculty

5

### EMS Core Faculty Ranks

Professor

Associate Professor

Assistant Professor

### EMS Faculty Medical Direction Roles

Air EMS agency

Ground EMS agency with less than 100 providers

Ground EMS agency with 100-500 providers

Ground EMS agency with over 1000 providers

Volunteer/paid on call EMS agency

## EMS Experiences

### EMS Activities Offered

Disaster Medicine

Event/Mass Gathering Medicine

Ground EMS

HEMS

Rural EMS

TEMS

Wilderness Medicine

### Fellow Driven Field Response Vehicle

Yes

### Description of Fellow Driven Vehicle

Shared vehicle

### Online Medical Control Opportunities

Yes

### Funded and Consistently Attended Fellow Experiences

NAEMSP Medical Director Course

NAEMSP Conference

### Didactic Hour Modality

EMS specific conference time

**Institutions Where Fellows Work Clinically in ED**

Single site only

**Required Clinical Sites**

Academic Medical Center

Tertiary Care/Level 1 Trauma Center

**Do Fellows Practice as Independent Attendings in ED?**

Yes

**Fellow Moonlighting Status**

Optional



# UNIVERSITY OF PITTSBURGH EMS FELLOWSHIP

<https://www.emergencymedicine.pitt.edu/education/fellowship-emergency-medical-services>

[gribowiczjm@upmc.edu](mailto:gribowiczjm@upmc.edu)

*Training EMS Fellows since 1990*

## Basic Information

### Program Director

Christian Martin-Gill, MD, MPH

### Assistant/Associate Program Director

Dylan Morris, MD, MBA

### Address

230 McKee Place, Suite 500, Pittsburgh, Pennsylvania 15209

### Region

Northeast

### Extra year available?

No

### ACGME Accredited

Yes

### Year of ACGME Accreditation

### Match Participation

Yes

### Percentage of ACGME years with enrolled fellow?

91

### Program Description

Our EMS Fellowship prepares the emergency physician to be a medical director for ground and air EMS services. Fellows obtain extensive experience in the clinical practice of prehospital care, as well as in the administration, education, research, and practical aspects of prehospital care. Through a wide variety of EMS experiences, the EMS Fellowship provides its graduates with the knowledge base and experience necessary to be successful in a variety of EMS systems and leadership positions.

## Fellow Details

### Base Salary Before Any Moonlighting

\$60,000 - \$80,000

### Average Salary Including Any Moonlighting

\$60,000 - \$80,000

### Weekly Required ED Hours for Base Salary

Less than 10 hours

### Annual Vacation Time

3-4 weeks

### ACGME Fellow Board Exam Pass Rate

100%

### ACGME Fellows Practicing as EMS Medical Directors

67% - 99%

## EMS Faculty

### Number of EMS Board Certified Core Faculty

11

### EMS Core Faculty Ranks

Professor

Associate Professor

Assistant Professor

### EMS Faculty Medical Direction Roles

Air EMS agency

Federal agency medical director

Ground EMS agency with less than 100 providers

Ground EMS agency with 100-500 providers

Paramedic initial certification training center

Volunteer/paid on call EMS agency

## EMS Experiences

### EMS Activities Offered

Disaster Medicine

Event/Mass Gathering Medicine

Ground EMS

HEMS

Rural EMS

TEMS

USAR

Wilderness Medicine

### Fellow Driven Field Response Vehicle

Yes

### Description of Fellow Driven Vehicle

Shared vehicle

### Online Medical Control Opportunities

Yes

### Funded and Consistently Attended Fellow Experiences

NAEMSP Medical Director Course

NAEMSP Conference

### Didactic Hour Modality

EMS specific conference time

### **Institutions Where Fellows Work Clinically in ED**

Single site only

### **Required Clinical Sites**

May practice at academic, community, or tertiary care center

### **Do Fellows Practice as Independent Attendings in ED?**

Yes

### **Fellow Moonlighting Status**

Optional

## **PARTING WORDS**

If you are not familiar with Pittsburgh, we welcome you to get to know this vibrant city. Pittsburgh is now a hub of innovation in healthcare, education, and technology. It is common for residents and fellows to come to Pittsburgh for a great training experience and find a new place to call home. The cost of living and crime rates are low, there are big city amenities, including world-class sports teams and the arts, and we are close to a variety of outdoor activities.



# PALMETTO HEALTH RICHLAND/UNIVERSITY OF SOUTH CAROLINA

<https://www.emergencyresident.com>

[spencer.robinson@prismahealth.org](mailto:spencer.robinson@prismahealth.org)

*Training EMS Fellows since 2012*

## Basic Information

**Program Director**  
Spencer Robinson, DO

**Assistant/Associate Program Director**  
Lee Turner, MD

**Address**  
14 Medical Park Drive, Suite 350, Columbia, South Carolina 29203

**Region**  
South

**Extra year available?**  
No

**ACGME Accredited**   **Year of ACGME Accreditation**  
Yes   2015

**Match Participation**  
Yes

**Percentage of ACGME years with enrolled fellow?**  
100

### Program Description

Broad based EMS experience with large operational component with Richland County EMS who responds to over 90,000 calls for service annually, as well as, Columbia/Richland Fire Department that operates 34 fire stations with over 500 career firefighters. EMS fellow has a take home QRV fully equipped for all aspects of medical/fire response and can self dispatch. Robust Air EMS experience with hospital affiliated helicopter system. Tactical EMS with local/state SWAT teams.

## Fellow Details

**Base Salary Before Any Moonlighting**  
\$80,000 - \$100,000

**Average Salary Including Any Moonlighting**  
Greater than \$120,000

**Weekly Required ED Hours for Base Salary**  
10 - 20 hours

**Annual Vacation Time**  
3-4 weeks

**ACGME Fellow Board Exam Pass Rate**  
100%

**ACGME Fellows Practicing as EMS Medical Directors**

## EMS Faculty

### Number of EMS Board Certified Core Faculty

6

### EMS Core Faculty Ranks

Associate Professor  
Assistant Professor

### EMS Faculty Medical Direction Roles

Air EMS agency  
Federal agency medical director  
Ground EMS agency with less than 100 providers  
Ground EMS agency with 100-500 providers  
Paramedic initial certification training center

## EMS Experiences

### EMS Activities Offered

Disaster Medicine  
Event/Mass Gathering Medicine  
Global EMS  
Ground EMS  
HEMS  
Rural EMS  
TEMS  
Wilderness Medicine

### Fellow Driven Field Response Vehicle

Yes

### Description of Fellow Driven Vehicle

Full time, take home vehicle for fellow

### Online Medical Control Opportunities

Yes

### Funded and Consistently Attended Fellow Experiences

NAEMSP Medical Director Course  
NAEMSP Conference  
Board Preparation Course  
CONTOMS  
AMPA Medical Director Course

### Didactic Hour Modality

Impromptu lectures

**Institutions Where Fellows Work Clinically in ED**

Multiple sites required

**Required Clinical Sites**

Academic Medical Center

Community ED

Tertiary Care/Level 1 Trauma Center

**Do Fellows Practice as Independent Attendings in ED?**

Yes

**Fellow Moonlighting Status**

Optional

## PARTING WORDS

Our EMS encatchment area is over one million people and we have medical directors in all of the major disciplines of EMS with fellow involvement. We like to give fellows a broad based EMS education, but also focus on your particular interest in EMS and tailor your fellowship towards your interest. South Carolina is a wonderful place to live with a low cost of living in close proximity to the mountains and the beach. It is a great place to live and work with a very collegial medical community.



# THE UNIVERSITY OF TENNESSEE - UTCOM - EMS FELLOWSHIP

<https://www.chattanoogaems.org>

[allyson.hemsley@erlangers.org](mailto:allyson.hemsley@erlangers.org)

*Training EMS Fellows since 2015*

## Basic Information

**Program Director**  
Frank Tift, MD

**Assistant/Associate Program Director**  
Jocelyn Deguzman, MD

**Address**

975 E Third St, Department of Emergency Medicine, Chattanooga, Tennessee  
37403

**Region**

**Extra year available?**  
No

**ACGME Accredited**  
Yes

**Year of ACGME  
Accreditation**  
2015

**Match Participation**  
Yes

**Percentage of ACGME  
years with enrolled  
fellow?**  
7

### Program Description

The EMS Fellowship in Chattanooga boasts a fantastic balance of EMS experiences, from ground EMS to specialty teams. We also have excellent exposure to helicopter EMS such that our fellows are trained and credentialed as full flight crew members (i.e. not simply a "ride-a-long" following orientation. Finally, Chattanooga is an excellent place to live, boasting a great medium size and multiple outdoor recreation highlights in the area.

## Fellow Details

**Base Salary Before Any Moonlighting**  
\$60,000 - \$80,000

**Average Salary Including Any Moonlighting**  
\$100,000 - \$120,000

**Weekly Required ED Hours for Base Salary**  
10 - 20 hours

**Annual Vacation Time**  
3-4 weeks

**ACGME Fellow Board Exam Pass Rate**  
100%

**ACGME Fellows Practicing as EMS Medical  
Directors**  
34% - 66%

## EMS Faculty

### Number of EMS Board Certified Core Faculty

4

### EMS Core Faculty Ranks

Associate Professor

Assistant Professor

### EMS Faculty Medical Direction Roles

Air EMS agency

Ground EMS agency with 100-500 providers

## EMS Experiences

### EMS Activities Offered

Disaster Medicine

Event/Mass Gathering Medicine

Ground EMS

HEMS

Rural EMS

TEMS

USAR

### Fellow Driven Field Response Vehicle

Yes

### Description of Fellow Driven Vehicle

Full time, take home vehicle for fellow

### Online Medical Control Opportunities

Yes

### Funded and Consistently Attended Fellow Experiences

NAEMSP Medical Director Course

### Didactic Hour Modality

EMS specific conference time

**Institutions Where Fellows Work Clinically in ED**

Single site, but multiple sites optional

**Required Clinical Sites**

Community ED

**Optional Clinical Sites**

Community ED

Rural ED

Stand Alone ED

**Do Fellows Practice as Independent Attendings in ED?**

Yes

**Fellow Moonlighting Status**

Optional

# McGOVERN MEDICAL SCHOOL AT UTHEALTH - EMERGENCY MEDICAL SERVICES FELLOWSHIP

<https://med.uth.edu/emergencymedicine/sections/prehospital-and-disaster-medicine/ems-fellowship/>

kevin.j.schulz@uth.tmc.edu

*Training EMS Fellows since 1994*



## Basic Information

**Program Director**  
Kevin Schulz, MD

**Assistant/Associate Program Director**

**Address**  
6431 Fannin St, 2nd Floor, JJJ, Houston, Texas 77030

**Region**  
South

**Extra year available?**  
No

**ACGME Accredited**  
Yes

**Year of ACGME Accreditation**  
2014

**Match Participation**  
Yes

**Percentage of ACGME years with enrolled fellow?**  
100

### Program Description

EMS fellows at UTHealth Houston have the opportunity to work as an Asst. Medical Director in one of the largest urban fire-based EMS systems in the country, the Houston Fire Department (HFD), a service that runs over 400k calls per year. Fellows are provided with a take-home HFD response vehicle. Fellows also have the opportunity to work with Memorial Hermann Life Flight, other suburban EMS agencies, and a dedicated cadre of knowledgeable and passionate faculty.

## Fellow Details

**Base Salary Before Any Moonlighting**  
Greater than \$120,000

**Average Salary Including Any Moonlighting**  
Greater than \$120,000

**Weekly Required ED Hours for Base Salary**  
10 - 20 hours

**Annual Vacation Time**  
3-4 weeks

**ACGME Fellow Board Exam Pass Rate**  
67%-99%

**ACGME Fellows Practicing as EMS Medical Directors**  
67% - 99%

## EMS Faculty

### Number of EMS Board Certified Core Faculty

5

### EMS Core Faculty Ranks

Professor

Associate Professor

Assistant Professor

### EMS Faculty Medical Direction Roles

Air EMS agency

Ground EMS agency with less than 100 providers

Ground EMS agency with 100-500 providers

Ground EMS agency with over 1000 providers

Paramedic initial certification training center

## EMS Experiences

### EMS Activities Offered

Disaster Medicine

Event/Mass Gathering Medicine

Ground EMS

HEMS

TEMS

### Fellow Driven Field Response Vehicle

Yes

### Description of Fellow Driven Vehicle

Full time, take home vehicle for fellow

### Online Medical Control Opportunities

Yes

### Funded and Consistently Attended Fellow Experiences

NAEMSP Medical Director Course

NAEMSP Conference

Texas EMS Medical Director's Conference (TX-NAEMSP Chapter)

### Didactic Hour Modality

EMS specific conference time

### **Institutions Where Fellows Work Clinically in ED**

Multiple sites required

### **Required Clinical Sites**

Tertiary Care/Level 1 Trauma Center

Level 3 Trauma County Hospital

### **Do Fellows Practice as Independent Attendings in ED?**

Yes

### **Fellow Moonlighting Status**

Required

## **PARTING WORDS**

Our dedicated cadre of accomplished faculty guide and mentor fellows through their fellowship year. Fellows will learn EMS medical direction on the front lines, serving as an Asst. Medical Director for the Houston Fire Department, where they serve as the on-call medical director for a city of over 2.3 million. With access to HFD, Memorial Hermann Life Flight, suburban EMS agencies, and the major events of the nation's 4th largest city, Houston is truly one of best places in the country to train!



# UT HEALTH SAN ANTONIO - JOE R. & TERESA LOZANO LONG SCHOOL OF MEDICINE

<https://lsom.uthscsa.edu/emergency-medicine/education/fellowships/ems/>

cooleyc@uthscsa.edu

*Training EMS Fellows since 2009*



## Basic Information

### Program Director

Craig Cooley, MD, MPH, EMT-P

### Assistant/Associate Program Director

Katherine Raczek, MD

### Address

7703 Floyd Curl Dr, MC 7736, San Antonio, Texas 78229

### Region

South

### Extra year available?

No

### ACGME Accredited

Yes

### Year of ACGME

Accreditation

2014

### Match Participation

Yes

### Percentage of ACGME years with enrolled fellow?

75

### Program Description

Our EMS Fellowship is an enriching opportunity that provides physicians with the necessary theoretical and applied experiences essential to physicians in the field of EMS medical direction. The program has strong partnerships with numerous regional and national emergency and disaster response agencies and the U.S. military. Fellows gain experience conducting field response and trainings with a variety of first responders in diverse settings and scenarios

## Fellow Details

### Base Salary Before Any Moonlighting

\$60,000 - \$80,000

### Average Salary Including Any Moonlighting

\$100,000 - \$120,000

### Weekly Required ED Hours for Base Salary

10 - 20 hours

### Annual Vacation Time

1-2 weeks

### ACGME Fellow Board Exam Pass Rate

67%-99%

### ACGME Fellows Practicing as EMS Medical

Directors

67% - 99%

## EMS Faculty

### Number of EMS Board Certified Core Faculty

10

### EMS Core Faculty Ranks

Professor

Associate Professor

Assistant Professor

### EMS Faculty Medical Direction Roles

Ground EMS agency with less than 100 providers

Ground EMS agency with 100-500 providers

Ground EMS agency with 500-1000 providers

Ground EMS agency with over 1000 providers

Paramedic initial certification training center

Volunteer/paid on call EMS agency

## EMS Experiences

### EMS Activities Offered

Disaster Medicine

Event/Mass Gathering Medicine

Global EMS

Ground EMS

HEMS

Rural EMS

TEMS

Wilderness Medicine

### Fellow Driven Field Response Vehicle

Yes

### Description of Fellow Driven Vehicle

Call schedule, take home vehicle for fellow

### Online Medical Control Opportunities

Yes

### Funded and Consistently Attended Fellow Experiences

NAEMSP Medical Director Course

NAEMSP Conference

### Didactic Hour Modality

EMS specific conference time

**Institutions Where Fellows Work Clinically in ED**

Single site, but multiple sites optional

**Required Clinical Sites**

Academic Medical Center

**Optional Clinical Sites**

Community ED

**Do Fellows Practice as Independent Attendings in ED?**

Yes

**Fellow Moonlighting Status**

Optional



# UNIVERSITY OF TEXAS SOUTHWESTERN- EMERGENCY MEDICAL SERVICES FELLOWSHIP

<https://www.utsouthwestern.edu/departments/emergency/education/fellowship/ems/>

connie.chow@utsouthwestern.edu

*Training EMS Fellows since 1997*

## Basic Information

### Program Director

Kathy J. Rinnert, MD, MPH

### Assistant/Associate Program Director

### Address

University of Texas Southwestern, 5323 Harry Hines Blvd., MC 8579,  
Dallas, Texas 75390

### Region

South

### Extra year available?

Optional

### ACGME Accredited

Yes

### Year of ACGME

Accreditation

2014

### Match Participation

Yes

### Percentage of ACGME

years with enrolled

fellow?

100

### Program Description

The program consists of five elements: didactics, practicums, seminars, computer-based training (CBT), and asynchronous learning. Didactics are lectures covering the Core Content of EMS Medicine. Practicums are practical experiences at EMS agency sites. Seminars are external conferences with counterpoint learning. CBT are web-based courses emphasizing key concepts in emergency response. Asynchronous learning consists of assigned readings. Over the year these provide over 900 hours of content.

## Fellow Details

### Base Salary Before Any Moonlighting

\$80,000 - \$100,000

### Average Salary Including Any Moonlighting

Greater than \$120,000

### Weekly Required ED Hours for Base Salary

### Annual Vacation Time

3-4 weeks

### ACGME Fellow Board Exam Pass Rate

67%-99%

### ACGME Fellows Practicing as EMS Medical Directors

67% - 99%

## EMS Faculty

**Number of EMS Board Certified Core Faculty**  
10

**EMS Core Faculty Ranks**

Professor  
Associate Professor  
Assistant Professor

**EMS Faculty Medical Direction Roles**

Air EMS agency  
Ground EMS agency with less than 100 providers  
Ground EMS agency with 100-500 providers  
Ground EMS agency with 500-1000 providers  
Ground EMS agency with over 1000 providers  
Paramedic initial certification training center

## EMS Experiences

**EMS Activities Offered**

Disaster Medicine  
Event/Mass Gathering Medicine  
Global EMS  
Ground EMS  
HEMS  
Rural EMS  
TEMS  
USAR  
Wilderness Medicine

**Fellow Driven Field Response Vehicle**

Yes

**Description of Fellow Driven Vehicle**

Shared vehicle

**Online Medical Control Opportunities**

Yes

**Funded and Consistently Attended Fellow Experiences**

NAEMSP Medical Director Course  
NAEMSP Conference  
TX Chapter of NAEMSP conference, NREMT Medical Directors Course

**Didactic Hour Modality**

EMS specific conference time

## Clinical Practice

### **Institutions Where Fellows Work Clinically in ED**

Single site only

### **Required Clinical Sites**

Academic Medical Center

### **Do Fellows Practice as Independent Attendings in ED?**

Yes

### **Fellow Moonlighting Status**

Required

# EMERGENCY MEDICINE FELLOWSHIP PROGRAMS (MULTIPLE TRACKS INCLUDING EMS / PREHOSPITAL CARE), UNIVERSITY OF TORONTO

[https://www.domapp.utoronto.ca/fellowship/dom\\_index.php?listall=1&divisions=4](https://www.domapp.utoronto.ca/fellowship/dom_index.php?listall=1&divisions=4)

Division.EM@utoronto.ca

*Training EMS Fellows since 2003*

## Basic Information

### Program Director

Russell MacDonald, MD MPH FRCPC DRCPS

### Assistant/Associate Program Director

### Address

Temerty Faculty of Medicine, University of Toronto, C. David Naylor  
Building; 6 Queen's Park Crescent West, Third Floor, Toronto, ON, Canada  
M5S 3H2

### Region

Canada

### Extra year available?

Optional

### ACGME Accredited

No

### Program Description

The Fellowship's mission is to expose highly competent individuals to Canada's largest air and land prehospital systems and mentor them to become leaders in prehospital and transport medicine. The vision is to be a respected, highly-sought, world-class program that attracts and trains outstanding physician leaders who will help define the future practice of prehospital and transport medicine and its related domains. Graduates are now leaders nationally and internationally.

## Fellow Details

### Base Salary Before Any Moonlighting

\$80,000 - \$100,000

### Average Salary Including Any Moonlighting

\$80,000 - \$100,000

### Weekly Required ED Hours for Base Salary

Less than 10 hours

### Annual Vacation Time

3-4 weeks

### ACGME Fellow Board Exam Pass Rate

### ACGME Fellows Practicing as EMS Medical Directors

67% - 99%

## EMS Faculty

### Number of EMS Board Certified Core Faculty

5

### EMS Core Faculty Ranks

Professor

Associate Professor

### EMS Faculty Medical Direction Roles

Air EMS agency

Ground EMS agency with over 1000 providers

Paramedic initial certification training center

## EMS Experiences

### EMS Activities Offered

Event/Mass Gathering Medicine

Fixed Wing EMS

Ground EMS

HEMS

Rural EMS

TEMS

USAR

### Fellow Driven Field Response Vehicle

No

### Online Medical Control Opportunities

Yes

### Funded and Consistently Attended Fellow Experiences

NAEMSP Medical Director Course

NAEMSP Conference

AMTC

### Didactic Hour Modality

Impromptu lectures

**Institutions Where Fellows Work Clinically in ED**

Multiple sites required

**Required Clinical Sites**

Academic Medical Center

Tertiary Care/Level 1 Trauma Center

**Do Fellows Practice as Independent Attendings in ED?**

No

**Fellow Moonlighting Status**

Optional

## PARTING WORDS

Our Fellows graduate with a Fellowship certificate from the Faculty of Medicine. The Royal College of Physicians and Surgeons of Canada recently recognized prehospital and transport medicine as a subspecialty. Given this, our program will be seeking accreditation in the near future.

# UNIVERSITY OF UTAH

<https://medicine.utah.edu/emergency-medicine/fellowships/ems>

[dan.defilippo@hsc.utah.edu](mailto:dan.defilippo@hsc.utah.edu)

*Training EMS Fellows since 2020*



## Basic Information

### Program Director

Jason Pickett, MD

### Assistant/Associate Program Director

Chris Ryba, MD

### Address

30 N. Mario Capecchi, HELIX Bldg, Level 2 South, Salt Lake City, Utah 84112

### Region

West

### Extra year available?

No

### ACGME Accredited

Yes

### Year of ACGME Accreditation

2020

### Match Participation

Yes

### Percentage of ACGME years with enrolled fellow?

100

### Program Description

This one-year ACGME-accredited EMS fellowship prepares physicians to practice independently in any EMS system. Fellows gain experience in urban, rural, air, and federal EMS through rotations with Salt Lake City Fire, Unified Fire, Mountain West Ambulance, AirMed, and optional sites. Training includes QI/QA, tactical medicine, committee involvement, didactics, and research, leading to board eligibility.

## Fellow Details

### Base Salary Before Any Moonlighting

\$80,000 - \$100,000

### Average Salary Including Any Moonlighting

\$80,000 - \$100,000

### Weekly Required ED Hours for Base Salary

Less than 10 hours

### Annual Vacation Time

3-4 weeks

### ACGME Fellow Board Exam Pass Rate

100%

### ACGME Fellows Practicing as EMS Medical Directors

Unsure

## EMS Faculty

### Number of EMS Board Certified Core Faculty

8

### EMS Core Faculty Ranks

Professor

Associate Professor

Assistant Professor

### EMS Faculty Medical Direction Roles

Air EMS agency

Ground EMS agency with less than 100 providers

State medical director

## EMS Experiences

### EMS Activities Offered

Disaster Medicine

Event/Mass Gathering Medicine

Fixed Wing EMS

Ground EMS

HEMS

Rural EMS

TEMS

USAR

Wilderness Medicine

### Fellow Driven Field Response Vehicle

Yes

### Description of Fellow Driven Vehicle

Shared vehicle

### Online Medical Control Opportunities

Yes

### Funded and Consistently Attended Fellow Experiences

NAEMSP Medical Director Course

NAEMSP Conference

Board Preparation Course

### Didactic Hour Modality

EMS specific conference time

**Institutions Where Fellows Work Clinically in ED**

Single site, but multiple sites optional

**Required Clinical Sites**

Academic Medical Center

Tertiary Care/Level 1 Trauma Center

**Optional Clinical Sites**

Rural ED

**Do Fellows Practice as Independent Attendings in ED?**

Yes

**Fellow Moonlighting Status**

Optional



# UNIVERSITY OF WASHINGTON EMS

## FELLOWSHIP

<https://em.uw.edu/education/fellowships/ems-fellowship>

[rusha@uw.edu](mailto:rusha@uw.edu)

*Training EMS Fellows since 2014*

### Basic Information

**Program Director**  
Andrew McCoy, MD

**Assistant/Associate Program Director**

**Address**  
Harborview Medical Center, 325 9th Ave, Seattle, Washington 98104

**Region**  
West

**Extra year available?**  
Optional

**ACGME Accredited**  
Yes

**Year of ACGME Accreditation**  
2014

**Match Participation**  
Yes

**Percentage of ACGME years with enrolled fellow?**  
10

#### Program Description

Come join us in Seattle! Our fellowship has a few unique aspects. First is our patient centered ground EMS system. Created in 1969, EMS in Seattle and King County is world renowned for its quality and research centered approach to patient care. Second, our flight program through Airlift Northwest is unparalleled for experience in caring for critically ill patients from the islands of Western Washington to remote parts of Alaska. Learn about the Resuscitation Academy! Join us next year!

### Fellow Details

**Base Salary Before Any Moonlighting**  
\$80,000 - \$100,000

**Average Salary Including Any Moonlighting**  
\$100,000 - \$120,000

**Weekly Required ED Hours for Base Salary**  
Less than 10 hours

**Annual Vacation Time**  
3-4 weeks

**ACGME Fellow Board Exam Pass Rate**  
100%

**ACGME Fellows Practicing as EMS Medical Directors**  
100%

## EMS Faculty

### **Number of EMS Board Certified Core Faculty**

4

### **EMS Core Faculty Ranks**

Professor

Associate Professor

Assistant Professor

### **EMS Faculty Medical Direction Roles**

Air EMS agency

Ground EMS agency with 100-500 providers

Ground EMS agency with 500-1000 providers

Ground EMS agency with over 1000 providers

Paramedic initial certification training center

## EMS Experiences

### **EMS Activities Offered**

Disaster Medicine

Event/Mass Gathering Medicine

Fixed Wing EMS

Global EMS

Ground EMS

HEMS

Rural EMS

### **Fellow Driven Field Response Vehicle**

No

### **Online Medical Control Opportunities**

Yes

### **Funded and Consistently Attended Fellow Experiences**

NAEMSP Medical Director Course

NAEMSP Conference

Board Preparation Course

### **Didactic Hour Modality**

EMS specific conference time

## Clinical Practice

**Institutions Where Fellows Work Clinically in ED**

Single site only

**Required Clinical Sites**

Community ED

**Do Fellows Practice as Independent Attendings in ED?**

Yes

**Fellow Moonlighting Status**

Not available

## PARTING WORDS

Our program offers a unique, exciting mix of EMS experiences that will appeal to all fellows, we hope to welcome you to the Pacific Northwest soon!

# UNIVERSITY OF NEBRASKA MEDICAL CENTER - EMS FELLOWSHIP

<https://www.unmc.edu/emergency/fellowships/ems/index.html>

[ems\\_fellowship@unmc.edu](mailto:ems_fellowship@unmc.edu)

*Training EMS Fellows since 2019*

## Basic Information

**Program Director**  
Shaila Coffey, MD

**Assistant/Associate Program Director**

**Address**  
981150 Nebraska Medical Center, Omaha, Nebraska 68198-1150

**Region**  
Midwest

**Extra year available?**  
No

**ACGME Accredited**   **Year of ACGME Accreditation**  
Yes   2019

**Match Participation**  
Yes

**Percentage of ACGME years with enrolled fellow?**  
33

**Program Description**

## Fellow Details

**Base Salary Before Any Moonlighting**  
\$60,000 - \$80,000

**Average Salary Including Any Moonlighting**  
\$100,000 - \$120,000

**Weekly Required ED Hours for Base Salary**

**Annual Vacation Time**  
3-4 weeks

**ACGME Fellow Board Exam Pass Rate**  
34%-66%

**ACGME Fellows Practicing as EMS Medical Directors**  
100%

## EMS Faculty

### Number of EMS Board Certified Core Faculty

3

### EMS Core Faculty Ranks

Associate Professor

Assistant Professor

### EMS Faculty Medical Direction Roles

Air EMS agency

Ground EMS agency with less than 100 providers

Paramedic initial certification training center

State medical director

Volunteer/paid on call EMS agency

## EMS Experiences

### EMS Activities Offered

Disaster Medicine

Event/Mass Gathering Medicine

Fixed Wing EMS

Ground EMS

HEMS

Rural EMS

TEMS

USAR

Wilderness Medicine

### Fellow Driven Field Response Vehicle

Yes

### Description of Fellow Driven Vehicle

Full time, take home vehicle for fellow

### Online Medical Control Opportunities

Yes

### Funded and Consistently Attended Fellow Experiences

NAEMSP Medical Director Course

NAEMSP Conference

Board Preparation Course

TEEX Courses

ITE

### Didactic Hour Modality

EM conference time

**Institutions Where Fellows Work Clinically in ED**

Multiple sites required

**Required Clinical Sites**

Academic Medical Center

Community ED

**Do Fellows Practice as Independent Attendings in ED?**

Yes

**Fellow Moonlighting Status**

Required

# USF EMERGENCY MEDICAL SERVICES

## FELLOWSHIP

<https://health.usf.edu/medicine/internalmedicine/emergency/fellowships/ems>

[rachel.semmons@gmail.com](mailto:rachel.semmons@gmail.com)

*Training EMS Fellows since 2011*

### Basic Information

**Program Director**

Rachel Semmons,

**Assistant/Associate Program Director**

Rachel Semmons,

**Address**

One Davis Blvd, Suite 503, Tampa, Florida 33606

**Region**

South

**Extra year available?**

No

**ACGME Accredited**

Yes

**Year of ACGME  
Accreditation**

2014

**Match Participation**

Yes

**Percentage of ACGME  
years with enrolled  
fellow?**

100

**Program Description**

### Fellow Details

**Base Salary Before Any Moonlighting**

\$80,000 - \$100,000

**Average Salary Including Any Moonlighting**

\$100,000 - \$120,000

**Weekly Required ED Hours for Base Salary**

10 - 20 hours

**Annual Vacation Time**

3-4 weeks

**ACGME Fellow Board Exam Pass Rate**

67%-99%

**ACGME Fellows Practicing as EMS Medical  
Directors**

100%

## EMS Faculty

### Number of EMS Board Certified Core Faculty

8

### EMS Core Faculty Ranks

Associate Professor

Assistant Professor

### EMS Faculty Medical Direction Roles

Air EMS agency

Ground EMS agency with 100-500 providers

Ground EMS agency with 500-1000 providers

Ground EMS agency with over 1000 providers

Paramedic initial certification training center

State medical director

## EMS Experiences

### EMS Activities Offered

Disaster Medicine

Event/Mass Gathering Medicine

Ground EMS

HEMS

Rural EMS

TEMS

USAR

### Fellow Driven Field Response Vehicle

Yes

### Description of Fellow Driven Vehicle

Shared vehicle

### Online Medical Control Opportunities

Yes

### Funded and Consistently Attended Fellow Experiences

NAEMSP Medical Director Course

NAEMSP Conference

Confined Space Course, Florida Association of EMS Medical Directors Quarterly State Meetings

### Didactic Hour Modality

EMS specific conference time

**Institutions Where Fellows Work Clinically in ED**

Single site, but multiple sites optional

**Required Clinical Sites**

Academic Medical Center

Tertiary Care/Level 1 Trauma Center

**Optional Clinical Sites**

Stand Alone ED

**Do Fellows Practice as Independent Attendings in ED?**

Yes

**Fellow Moonlighting Status**

Optional

# UT AUSTIN DELL MEDICAL SCHOOL/AUSTIN-TRAVIS COUNTY EMS

<https://dellmed.utexas.edu/education/academics/graduate-medical-education/ems-fellowship>

isabel.stevens@ascension.org

*Training EMS Fellows since 2021*

## Basic Information

**Program Director**  
Mark Escott, MD, MPH

**Assistant/Associate Program Director**  
Andrew Chou, MD

**Address**  
15 Waller St, Austin, Texas 78702

**Region**  
South

**Extra year available?**  
No

**ACGME Accredited**   **Year of ACGME Accreditation**  
Yes   2020

**Match Participation**  
Yes

**Percentage of ACGME years with enrolled fellow?**  
100

### Program Description

The Fellowship is designed for physicians who want a career as an EMS Medical Director with a significant field response component. The EMS Fellowship allows for flexibility in longitudinal experience based on the Fellow's individual interests while providing a robust education to prepare them for EMS Board Certification. The Fellow experience includes ATCEMS, Austin Fire Dept, Texas Department of Public Safety, and other programs. Stipend and take-home EMS SUV in addition to PGY-4 salary.

## Fellow Details

**Base Salary Before Any Moonlighting**  
\$60,000 - \$80,000

**Average Salary Including Any Moonlighting**  
\$100,000 - \$120,000

**Weekly Required ED Hours for Base Salary**  
10 - 20 hours

**Annual Vacation Time**  
3-4 weeks

**ACGME Fellow Board Exam Pass Rate**

**ACGME Fellows Practicing as EMS Medical Directors**  
34% - 66%

## EMS Faculty

### Number of EMS Board Certified Core Faculty

5

### EMS Core Faculty Ranks

Assistant Professor

### EMS Faculty Medical Direction Roles

Air EMS agency

Ground EMS agency with 100-500 providers

Ground EMS agency with 500-1000 providers

Ground EMS agency with over 1000 providers

Paramedic initial certification training center

## EMS Experiences

### EMS Activities Offered

Disaster Medicine

Event/Mass Gathering Medicine

Ground EMS

HEMS

Rural EMS

TEMS

Wilderness Medicine

### Fellow Driven Field Response Vehicle

Yes

### Description of Fellow Driven Vehicle

Full time, take home vehicle for fellow

### Online Medical Control Opportunities

Yes

### Funded and Consistently Attended Fellow Experiences

NAEMSP Medical Director Course

NAEMSP Conference

### Didactic Hour Modality

EMS specific conference time

## Clinical Practice

### **Institutions Where Fellows Work Clinically in ED**

Multiple sites required

### **Required Clinical Sites**

Academic Medical Center

### **Do Fellows Practice as Independent Attendings in ED?**

Yes

### **Fellow Moonlighting Status**

Optional

# VANDERBILT UNIVERSITY MEDICAL CENTER - EMS FELLOWSHIP

<https://emergencymedicine.vumc.org/fellowships/ems>

[emsfellowship@vumc.org](mailto:emsfellowship@vumc.org)

*Training EMS Fellows since 2006*

## Basic Information

**Program Director**  
Jared McKinney,

**Assistant/Associate Program Director**  
Kailey Winkler,

**Address**  
2215 Garland Ave, Light Hall Ste 203, Nashville, Tennessee 37232-0687

**Region**  
South

**Extra year available?**  
No

**ACGME Accredited**  
Yes

**Year of ACGME Accreditation**  
2016

**Match Participation**  
Yes

**Percentage of ACGME years with enrolled fellow?**  
63

### Program Description

The Fellowship offers an array of experiences including ground EMS experience with multiple EMS agencies from urban to rural, work with Vanderbilt LifeFlight ground inter facility transport, Critical Care ground transport, aeromedical transport with multiple HEMS bases, and a large Event Medicine Division covering over 1000 events per year. The fellow will also work with the EMS Center of Excellence providing education and outreach throughout the region.

## Fellow Details

**Base Salary Before Any Moonlighting**  
\$80,000 - \$100,000

**Average Salary Including Any Moonlighting**  
\$100,000 - \$120,000

**Weekly Required ED Hours for Base Salary**  
Less than 10 hours

**Annual Vacation Time**  
3-4 weeks

**ACGME Fellow Board Exam Pass Rate**

**ACGME Fellows Practicing as EMS Medical Directors**  
34% - 66%

## EMS Faculty

### Number of EMS Board Certified Core Faculty

6

### EMS Core Faculty Ranks

Associate Professor

Assistant Professor

### EMS Faculty Medical Direction Roles

Air EMS agency

Federal agency medical director

Ground EMS agency with less than 100 providers

Ground EMS agency with 500-1000 providers

Paramedic initial certification training center

## EMS Experiences

### EMS Activities Offered

Event/Mass Gathering Medicine

Fixed Wing EMS

Ground EMS

HEMS

Rural EMS

TEMS

### Fellow Driven Field Response Vehicle

Yes

### Description of Fellow Driven Vehicle

Full time, take home vehicle for fellow

### Online Medical Control Opportunities

Yes

### Funded and Consistently Attended Fellow Experiences

NAEMSP Medical Director Course

NAEMSP Conference

### Didactic Hour Modality

EMS specific conference time

**Institutions Where Fellows Work Clinically in ED**

Single site, but multiple sites optional

**Required Clinical Sites**

Academic Medical Center

**Optional Clinical Sites**

**Do Fellows Practice as Independent Attendings in ED?**

Yes

**Fellow Moonlighting Status**

Optional

# VIDANT MEDICAL CENTER / EAST

## CAROLINA UNIVERSITY

<https://emergency-medicine.ecu.edu/ems-fellowship/>

pennypacker1@ecu.edu

*Training EMS Fellows since 1989*



### Basic Information

**Program Director**  
Roberto Portela, MD

**Assistant/Associate Program Director**  
Andrew Bouland, MD

**Address**  
600 Moye Blvd, VMC 3ED-300, Greenville, North Carolina 27834

**Region**  
Northeast

**Extra year available?**  
No

**ACGME Accredited**  
Yes

**Year of ACGME Accreditation**

**Match Participation**  
Yes

**Percentage of ACGME years with enrolled fellow?**  
80

#### Program Description

ECU offers a one-year ACGME-accredited program that covers the core content of EMS. Formal didactics, mentorship, simulation training, and hands-on experience accomplish the fellowship objectives. The fellow will experience both urban and rural settings within different EMS systems, Fire-Based, Third Service models, and Non-Emergency transport agencies. The fellow will also have experience with ECU Health EastCare, our critical air care transport service.

### Fellow Details

**Base Salary Before Any Moonlighting**  
\$60,000 - \$80,000

**Average Salary Including Any Moonlighting**  
\$80,000 - \$100,000

**Weekly Required ED Hours for Base Salary**  
Less than 10 hours

**Annual Vacation Time**  
1-2 weeks

**ACGME Fellow Board Exam Pass Rate**  
100%

**ACGME Fellows Practicing as EMS Medical Directors**  
67% - 99%

## EMS Faculty

### Number of EMS Board Certified Core Faculty

7

### EMS Core Faculty Ranks

Professor

Associate Professor

Assistant Professor

### EMS Faculty Medical Direction Roles

Air EMS agency

Ground EMS agency with 100-500 providers

Paramedic initial certification training center

## EMS Experiences

### EMS Activities Offered

Event/Mass Gathering Medicine

Ground EMS

HEMS

Rural EMS

TEMS

### Fellow Driven Field Response Vehicle

Yes

### Description of Fellow Driven Vehicle

Full time, take home vehicle for fellow

### Online Medical Control Opportunities

Yes

### Funded and Consistently Attended Fellow Experiences

NAEMSP Medical Director Course

NAEMSP Conference

### Didactic Hour Modality

EMS specific conference time

**Institutions Where Fellows Work Clinically in ED**

Single site, but multiple sites optional

**Required Clinical Sites**

Community ED

**Optional Clinical Sites**

Academic Medical Center

Rural ED

**Do Fellows Practice as Independent Attendings in ED?**

Yes

**Fellow Moonlighting Status**

Optional



# VIRGINIA COMMONWEALTH UNIVERSITY

<https://emergencymedicine.vcu.edu/education/emergency-medical-services-fellowship/>

michelle.crossen@vcuhealth.org

*Training EMS Fellows since 2015*



## Basic Information

### Program Director

Amir Louka, MD

### Assistant/Associate Program Director

### Address

1250 E Marshall St, Main Hospital 2-500, Richmond, Virginia 23298

### Region

South

### Extra year available?

No

### ACGME Accredited

Yes

### Year of ACGME Accreditation

2016

### Match Participation

Yes

### Percentage of ACGME years with enrolled fellow?

71

### Program Description

Our accredited fellowship prepares emergency physicians in all aspects of pre-hospital and out-of-hospital care. Graduates leave the program with the knowledge and skillset required to function as an independent EMS physician. VCU Medical Center is a tertiary referral center providing comprehensive stroke and cardiac care and is Virginia's only Level 1 trauma center certified in adult, pediatric and burn care. Fellows can gain experience in community paramedicine, tactical and event medicine.

## Fellow Details

### Base Salary Before Any Moonlighting

\$60,000 - \$80,000

### Average Salary Including Any Moonlighting

\$80,000 - \$100,000

### Weekly Required ED Hours for Base Salary

10 - 20 hours

### Annual Vacation Time

3-4 weeks

### ACGME Fellow Board Exam Pass Rate

100%

### ACGME Fellows Practicing as EMS Medical Directors

100%

## EMS Faculty

### Number of EMS Board Certified Core Faculty

6

### EMS Core Faculty Ranks

Professor

Associate Professor

Assistant Professor

### EMS Faculty Medical Direction Roles

Air EMS agency

Federal agency medical director

Ground EMS agency with less than 100 providers

Ground EMS agency with 100-500 providers

Ground EMS agency with 500-1000 providers

Paramedic initial certification training center

Volunteer/paid on call EMS agency

## EMS Experiences

### EMS Activities Offered

Disaster Medicine

Event/Mass Gathering Medicine

Global EMS

Ground EMS

HEMS

Rural EMS

TEMS

USAR

Wilderness Medicine

### Fellow Driven Field Response Vehicle

No

### Online Medical Control Opportunities

Yes

### Funded and Consistently Attended Fellow Experiences

NAEMSP Medical Director Course

NAEMSP Conference

CONTOMS

### Didactic Hour Modality

EMS specific conference time

**Institutions Where Fellows Work Clinically in ED**

Multiple sites required

**Required Clinical Sites**

Academic Medical Center

Stand Alone ED

**Do Fellows Practice as Independent Attendings in ED?**

Yes

**Fellow Moonlighting Status**

Optional



# VIRGINIA TECH - CARILION EMERGENCY MEDICAL SERVICES FELLOWSHIP

<https://gme.carilionclinic.org/emergency-medical-services-fellowship/our-program>

lsamos@carilionclinic.org

*Training EMS Fellows since 2015*



## Basic Information

**Program Director**  
Hayley Rose-Inman, MD

**Assistant/Associate Program Director**  
Eric Stanley, DO

**Address**  
1 Riverside Circle, Suite 400, Roanoke, Virginia 24014

**Region**  
South

**Extra year available?**  
Optional

**ACGME Accredited**  
Yes

**Year of ACGME Accreditation**  
2016

**Match Participation**  
Yes

**Percentage of ACGME years with enrolled fellow?**  
66

### Program Description

We have a very comprehensive program that offers a little of everything. Urban and rural ground EMS, covering over 500 sq. mi. with a regional RSI program; hospital neonatal transport team; a robust ground transport and HEMS/critical care. Mass Gathering stadium coverage at VT football games and various large event races. EMS education at the local EMS programs. We try to tailor the program to your interest. Last but not least, one of the prettiest areas to live and work

## Fellow Details

**Base Salary Before Any Moonlighting**  
\$60,000 - \$80,000

**Average Salary Including Any Moonlighting**  
\$80,000 - \$100,000

**Weekly Required ED Hours for Base Salary**  
10 - 20 hours

**Annual Vacation Time**  
3-4 weeks

**ACGME Fellow Board Exam Pass Rate**  
67%-99%

**ACGME Fellows Practicing as EMS Medical Directors**  
67% - 99%

## EMS Faculty

### Number of EMS Board Certified Core Faculty

4

### EMS Core Faculty Ranks

Assistant Professor

### EMS Faculty Medical Direction Roles

Air EMS agency

Ground EMS agency with less than 100 providers

Ground EMS agency with 100-500 providers

Paramedic initial certification training center

Volunteer/paid on call EMS agency

## EMS Experiences

### EMS Activities Offered

Disaster Medicine

Event/Mass Gathering Medicine

Ground EMS

HEMS

Rural EMS

USAR

Wilderness Medicine

### Fellow Driven Field Response Vehicle

Yes

### Description of Fellow Driven Vehicle

Shared vehicle

### Online Medical Control Opportunities

Yes

### Funded and Consistently Attended Fellow Experiences

NAEMSP Medical Director Course

NAEMSP Conference

Board Preparation Course

### Didactic Hour Modality

EMS specific conference time

**Institutions Where Fellows Work Clinically in ED**

Multiple sites required

**Required Clinical Sites**

Academic Medical Center

Community ED

Rural ED

Tertiary Care/Level 1 Trauma Center

**Do Fellows Practice as Independent Attendings in ED?**

Yes

**Fellow Moonlighting Status**

Optional

## PARTING WORDS

Come work and live in an amazing place with great people. Train with physicians who are passionate about EMS medicine and medical direction.



# WAKE FOREST DEPARTMENT OF EMERGENCY MEDICINE

<https://school.wakehealth.edu/education-and-training/residencies-and-fellowships/emergency-medical-services-fellowship>

gdube@wakehealth.edu



*Training EMS Fellows since*

## Basic Information

**Program Director**  
Stephen Powell, MD

**Assistant/Associate Program Director**

**Address**  
1 Medical Center Blvd, Winston Salem, North Carolina 27157

**Region**  
South

**Extra year available?**  
Optional

**ACGME Accredited**    **Year of ACGME Accreditation**  
Yes                              2016

**Match Participation**  
Yes

**Percentage of ACGME years with enrolled fellow?**

**Program Description**

## Fellow Details

**Base Salary Before Any Moonlighting**

**Average Salary Including Any Moonlighting**

**Weekly Required ED Hours for Base Salary**

**Annual Vacation Time**

**ACGME Fellow Board Exam Pass Rate**  
100%

**ACGME Fellows Practicing as EMS Medical Directors**

## EMS Faculty

### Number of EMS Board Certified Core Faculty

### EMS Core Faculty Ranks

Professor  
Associate Professor  
Assistant Professor

### EMS Faculty Medical Direction Roles

Air EMS agency  
Federal agency medical director  
Ground EMS agency with less than 100 providers  
Ground EMS agency with 100-500 providers  
Ground EMS agency with 500-1000 providers  
Ground EMS agency with over 1000 providers  
Paramedic initial certification training center  
State medical director  
Volunteer/paid on call EMS agency

## EMS Experiences

### EMS Activities Offered

Disaster Medicine  
Event/Mass Gathering Medicine  
Fixed Wing EMS  
Global EMS  
Ground EMS  
HEMS  
Rural EMS  
TEMS  
Wilderness Medicine

### Fellow Driven Field Response Vehicle

Yes

### Description of Fellow Driven Vehicle

Full time, take home vehicle for fellow

### Online Medical Control Opportunities

Yes

### Funded and Consistently Attended Fellow Experiences

NAEMSP Medical Director Course  
NAEMSP Conference  
Discretion of EMS Fellowship Program Director and EMS Fellow Interest

### Didactic Hour Modality

EMS specific conference time

## Clinical Practice

### **Institutions Where Fellows Work Clinically in ED**

Single site only

### **Required Clinical Sites**

### **Do Fellows Practice as Independent Attendings in ED?**

### **Fellow Moonlighting Status**

67% - 99%

## EMS Faculty

### Number of EMS Board Certified Core Faculty

7

### EMS Core Faculty Ranks

Associate Professor

Assistant Professor

### EMS Faculty Medical Direction Roles

Federal agency medical director

Ground EMS agency with less than 100 providers

Ground EMS agency with 100-500 providers

Ground EMS agency with 500-1000 providers

Ground EMS agency with over 1000 providers

Paramedic initial certification training center

Volunteer/paid on call EMS agency

## EMS Experiences

### EMS Activities Offered

Disaster Medicine

Event/Mass Gathering Medicine

Ground EMS

HEMS

Rural EMS

TEMS

USAR

### Fellow Driven Field Response Vehicle

Yes

### Description of Fellow Driven Vehicle

Full time, take home vehicle for fellow

### Online Medical Control Opportunities

Yes

### Funded and Consistently Attended Fellow Experiences

NAEMSP Medical Director Course

NAEMSP Conference

NREMT Course, Hawaii Ironman

### Didactic Hour Modality

EMS specific conference time

**Institutions Where Fellows Work Clinically in ED**

Multiple sites required

**Required Clinical Sites**

Academic Medical Center

Community ED

**Do Fellows Practice as Independent Attendings in ED?**

Yes

**Fellow Moonlighting Status**

Optional

## PARTING WORDS

We pride ourselves in providing a well-rounded EMS fellowship experience. Our fellows are prepared to be a leader in EMS medicine. We make every effort to make sure our EMS fellows find an EMS position they love in the location/area they want.



# WAYNE STATE UNIVERSITY/CITY OF DETROIT EMS DIVISION

<https://em.med.wayne.edu/ems-fellowship>

[rkdunne@wayne.edu](mailto:rkdunne@wayne.edu)

*Training EMS Fellows since 2004*

## Basic Information

**Program Director**  
Robert Dunne, MD

**Assistant/Associate Program Director**  
Keith Alangaden, MD

**Address**  
4201 St Antoine, Detroit 48201

**Region**  
Midwest

**Extra year available?**  
Optional

**ACGME Accredited**    **Year of ACGME Accreditation**  
Yes                      2014

**Match Participation**  
Yes

**Percentage of ACGME years with enrolled fellow?**  
80

### Program Description

Wayne State University School of Medicine and the Detroit Medical Center Department of Emergency Medicine EMS fellowship is an ACGME accredited one-year program resulting in EMS subspecialty board eligibility.

WSU Department of Emergency Medicine has a fully mature training and research program with 4 affiliated residencies in the City of Detroit and long history of EM and EMS leadership.

## Fellow Details

**Base Salary Before Any Moonlighting**  
\$60,000 - \$80,000

**Average Salary Including Any Moonlighting**  
Greater than \$120,000

**Weekly Required ED Hours for Base Salary**  
Less than 10 hours

**Annual Vacation Time**  
3-4 weeks

**ACGME Fellow Board Exam Pass Rate**  
67%-99%

**ACGME Fellows Practicing as EMS Medical Directors**  
67% - 99%

## EMS Faculty

### Number of EMS Board Certified Core Faculty

6

### EMS Core Faculty Ranks

Professor

Associate Professor

Assistant Professor

### EMS Faculty Medical Direction Roles

Air EMS agency

Ground EMS agency with less than 100 providers

Ground EMS agency with over 1000 providers

Paramedic initial certification training center

## EMS Experiences

### EMS Activities Offered

Disaster Medicine

Event/Mass Gathering Medicine

Global EMS

Ground EMS

HEMS

Rural EMS

TEMS

### Fellow Driven Field Response Vehicle

Yes

### Description of Fellow Driven Vehicle

Full time, take home vehicle for fellow

### Online Medical Control Opportunities

Yes

### Funded and Consistently Attended Fellow Experiences

NAEMSP Medical Director Course

NAEMSP Conference

CONTOMS

### Didactic Hour Modality

EMS specific conference time plus one on one

**Institutions Where Fellows Work Clinically in ED**

Single site, but multiple sites optional

**Required Clinical Sites**

**Optional Clinical Sites**

Academic Medical Center

Community ED

Rural ED

Stand Alone ED

Tertiary Care/Level 1 Trauma Center

Urgent Care

**Do Fellows Practice as Independent Attendings in ED?**

Yes

**Fellow Moonlighting Status**

Optional



# WESTERN MICHIGAN UNIVERSITY, HOMER STRYKER M.D. SCHOOL OF MEDICINE

<https://wmed.edu/node/136>

[emergmed@wmed.edu](mailto:emergmed@wmed.edu)

*Training EMS Fellows since 2013*



## Basic Information

**Program Director**  
Joshua Mastenbrook, MD

**Assistant/Associate Program Director**  
Stephanie Van Alsten, MD

**Address**  
1000 Oakland Dr, Kalamazoo, Michigan 49008

**Region**  
Midwest

**Extra year available?**  
No

**ACGME Accredited**   **Year of ACGME Accreditation**  
Yes   2014

**Match Participation**  
Yes

**Percentage of ACGME years with enrolled fellow?**  
92

### Program Description

Our EMS Fellowship Program is nestled in Kalamazoo, located in SW MI about 30 min from Lake Michigan. Kalamazoo boasts a medical school, public university, and private liberal arts college. Our two tertiary care hospitals service 1-million+ people. EMS fellows gain a broad education in prehospital and disaster medicine through well-designed didactics, extensive field response with a dedicated take-home vehicle, agency admin and oversight activities, and local/regional/state committees.

## Fellow Details

**Base Salary Before Any Moonlighting**  
\$60,000 - \$80,000

**Average Salary Including Any Moonlighting**  
\$100,000 - \$120,000

**Weekly Required ED Hours for Base Salary**  
Less than 10 hours

**Annual Vacation Time**  
3-4 weeks

**ACGME Fellow Board Exam Pass Rate**  
67%-99%

**ACGME Fellows Practicing as EMS Medical Directors**  
67% - 99%

## EMS Faculty

### Number of EMS Board Certified Core Faculty

6

### EMS Core Faculty Ranks

Professor

Associate Professor

Assistant Professor

### EMS Faculty Medical Direction Roles

Federal agency medical director

Ground EMS agency with less than 100 providers

Ground EMS agency with 100-500 providers

Paramedic initial certification training center

State medical director

Volunteer/paid on call EMS agency

## EMS Experiences

### EMS Activities Offered

Disaster Medicine

Event/Mass Gathering Medicine

Ground EMS

HEMS

Rural EMS

TEMS

Wilderness Medicine

### Fellow Driven Field Response Vehicle

Yes

### Description of Fellow Driven Vehicle

Call schedule, take home vehicle for fellow

### Online Medical Control Opportunities

Yes

### Funded and Consistently Attended Fellow Experiences

NAEMSP Medical Director Course

NAEMSP Conference

NREMT EMS Fellows Conference, SaveMIHeart Conference, North American Active Assailant Conference

### Didactic Hour Modality

EMS specific conference time

**Institutions Where Fellows Work Clinically in ED**

Multiple sites required

**Required Clinical Sites**

Academic Medical Center

Community ED

Tertiary Care/Level 1 Trauma Center

**Do Fellows Practice as Independent Attendings in ED?**

Yes

**Fellow Moonlighting Status**

Optional

## PARTING WORDS

We have a unique partnership with 3 national parks - providing online medical control and in-person education: Yellowstone National Park, Great Smoky Mountains National Park, and Indiana Dunes National Park.



# YALE UNIVERSITY

<https://medicine.yale.edu/emergencymed/education/fellowships/ems/>

[katherine.couturier@yale.edu](mailto:katherine.couturier@yale.edu)

*Training EMS Fellows since*



## Basic Information

### Program Director

Kate Couturier, MD

### Assistant/Associate Program Director

Thomas Lardaro

### Address

464 Congress Ave., New Haven, Connecticut 06519

### Region

Northeast

### Extra year available?

No

### ACGME Accredited

Yes

### Year of ACGME Accreditation

### Match Participation

Yes

### Percentage of ACGME years with enrolled fellow?

### Program Description

Emphasis on operational & academic EMS

Field response as an EMS physician with regional team, with two dedicated EMS vehicles.

Training/certification opportunities include EVOC, Hazmat Ops, ICS and Emergency Medical Dispatcher

Extensive research opportunities in any area of EMS interest. This includes the opportunity to collaborate with other Yale programs.

Mass gathering medicine experience, including coverage of Yale athletics.

Protected and funded travel to the NAEMSP and SAEM annual meetings

## Fellow Details

### Base Salary Before Any Moonlighting

\$80,000 - \$100,000

### Average Salary Including Any Moonlighting

### Weekly Required ED Hours for Base Salary

10 - 20 hours

### Annual Vacation Time

3-4 weeks

### ACGME Fellow Board Exam Pass Rate

100%

### ACGME Fellows Practicing as EMS Medical Directors

## EMS Faculty

### Number of EMS Board Certified Core Faculty

### EMS Core Faculty Ranks

Professor

Associate Professor

Assistant Professor

### EMS Faculty Medical Direction Roles

Air EMS agency

Ground EMS agency with less than 100 providers

Ground EMS agency with 100-500 providers

Ground EMS agency with over 1000 providers

Paramedic initial certification training center

## EMS Experiences

### EMS Activities Offered

Event/Mass Gathering Medicine

Ground EMS

HEMS

TEMS

Wilderness Medicine

### Fellow Driven Field Response Vehicle

Yes

### Description of Fellow Driven Vehicle

### Online Medical Control Opportunities

Yes

### Funded and Consistently Attended Fellow Experiences

NAEMSP Medical Director Course

NAEMSP Conference

Board Preparation Course

### Didactic Hour Modality

**Institutions Where Fellows Work Clinically in ED**

Multiple sites required

**Required Clinical Sites**

Academic Medical Center

Community ED

Stand Alone ED

**Do Fellows Practice as Independent Attendings in ED?**

Yes

**Fellow Moonlighting Status**

Optional

